

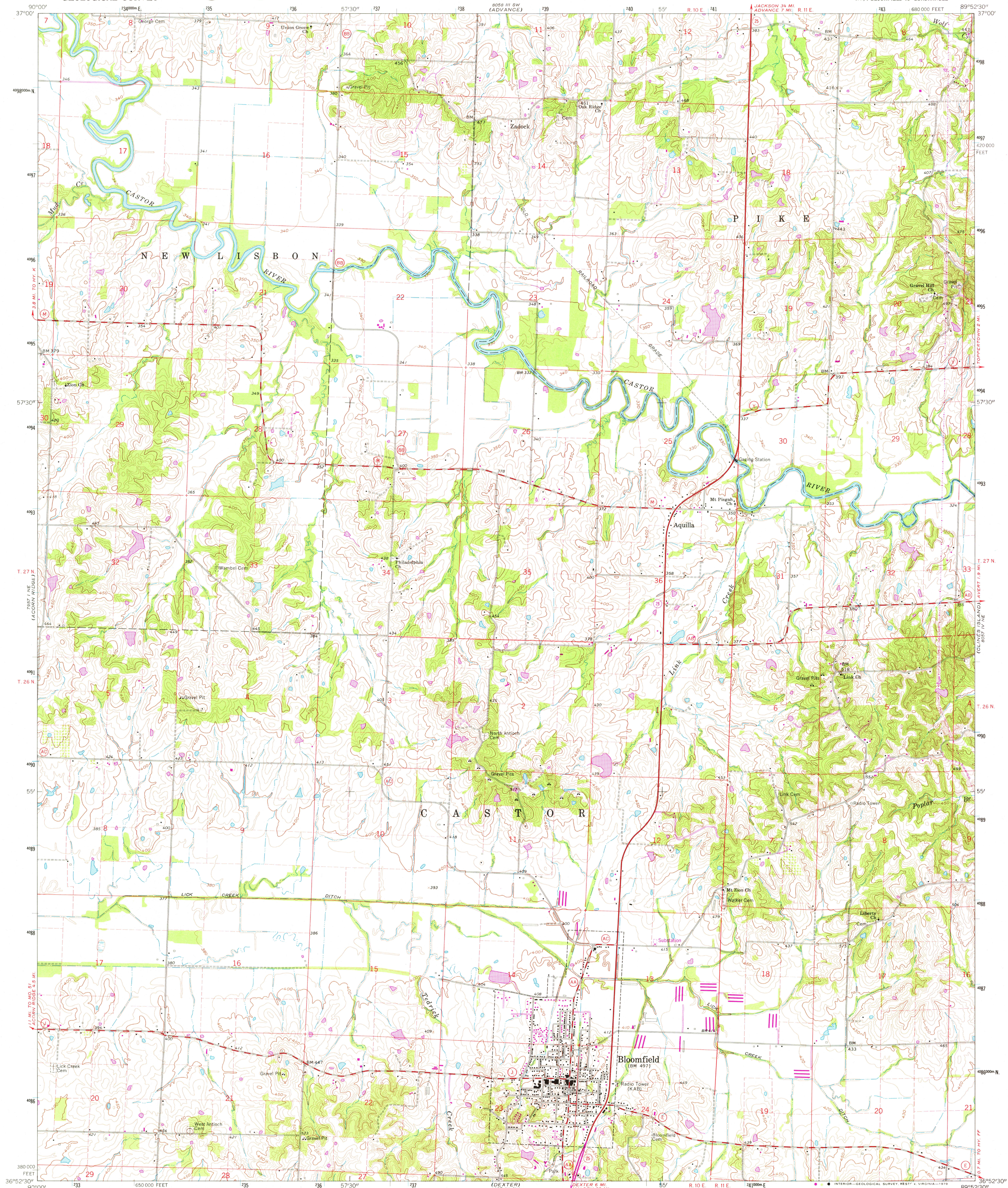
2498 USE
(STANDARD)

UNITED STATES
DEPARTMENT OF THE INTERIOR
GEOLOGICAL SURVEY



BLOOMFIELD QUADRANGLE
MISSOURI-STODDARD CO.
7.5 MINUTE SERIES (TOPOGRAPHIC)
NW 1/4 BLOOMFIELD 15' QUADRANGLE

89°52'30" E
(BELL CITY)



Mapped, edited, and published by the Geological Survey

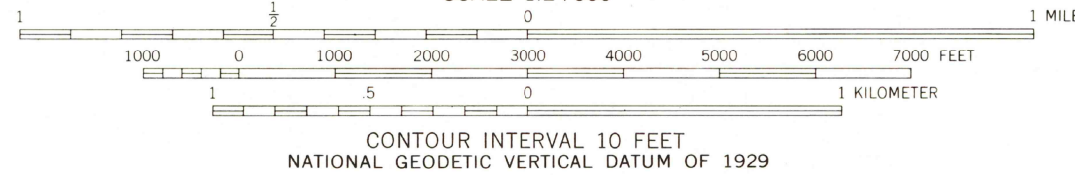
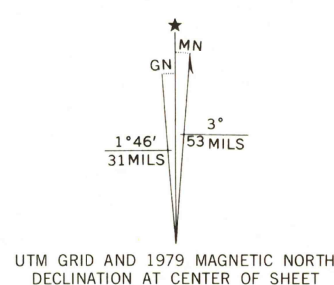
Control by USGS and USC&GS

Topography by photogrammetric methods from aerial
photographs taken 1962. Field checked 1963

Polyconic projection. 1927 North American datum
10,000-foot grid based on Missouri coordinate system, east zone
1000-meter Universal Transverse Mercator grid ticks,
zone 16, shown in blue

Fine red dashed lines indicate selected fence and field lines where
generally visible on aerial photographs. This information is unchecked

Revisions shown in purple and woodland compiled from
aerial photographs taken 1976 and other source data
This information not field checked. Map edited 1979



THIS MAP COMPLIES WITH NATIONAL MAP ACCURACY STANDARDS
FOR SALE BY U. S. GEOLOGICAL SURVEY, DENVER, COLORADO 80225, OR RESTON, VIRGINIA 22092
AND BY THE MISSOURI GEOLOGICAL SURVEY, ROLLA, MISSOURI 65401
A FOLDER DESCRIBING TOPOGRAPHIC MAPS AND SYMBOLS IS AVAILABLE ON REQUEST



USGS
Historical File
Topographic Division

BLOOMFIELD, MO.
NW 1/4 BLOOMFIELD 15' QUADRANGLE
N3652.5-W8952.5/7.5

1963
PHOTOREVISED 1979
AMS 8057 IV NW-SERIES V879

FEB 13 1980

1633