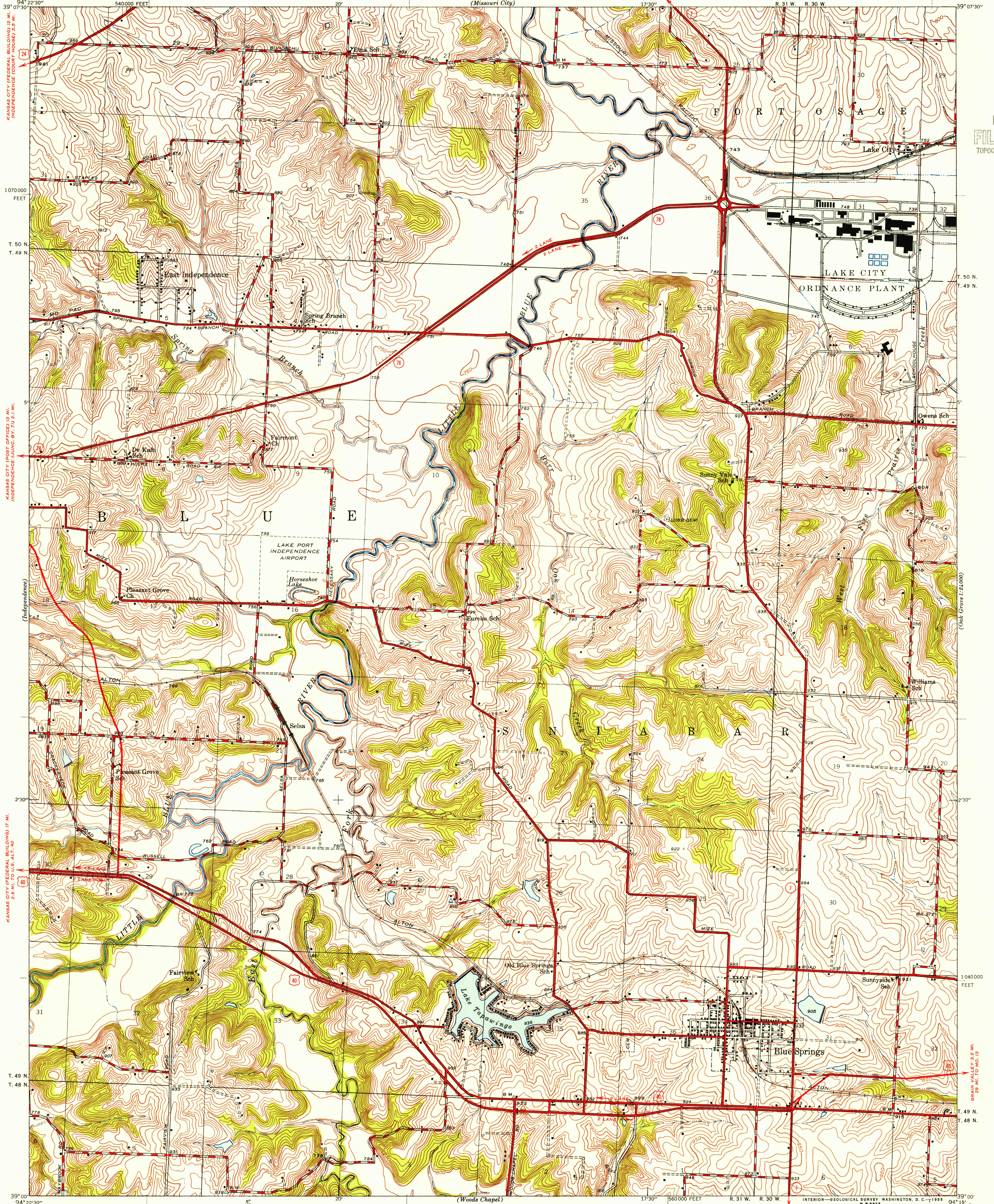
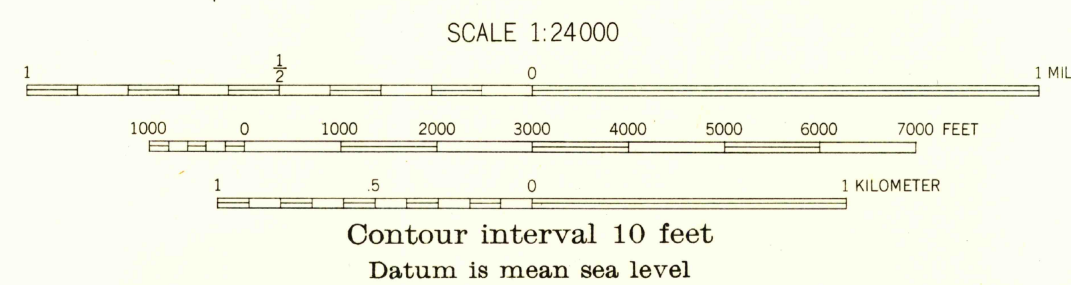


U.S.G.S.
FILE COPY
TOPOGRAPHIC DIVISION



Maped by the Geological Survey
1933 and 1945

TRUE NORTH
MAGNETIC NORTH
APPROXIMATE MEAN
DECLINATION, 1945



ROAD CLASSIFICATION
Heavy-duty ——— 4 LANE 6 LANE Light-duty ———
Medium-duty ——— 4 LANE 6 LANE Unimproved dirt =====
U. S. Route State Route

BLUE SPRINGS, MO.

N 3900-W 9415/7.5
1945

U.S.G.S.
FILE COPY
TOPOGRAPHIC DIVISION

FOR SALE BY U. S. GEOLOGICAL SURVEY, FEDERAL CENTER, DENVER, COLORADO OR WASHINGTON 25, D. C.
AND BY THE MISSOURI GEOLOGICAL SURVEY, ROLLA, MISSOURI
A FOLDER DESCRIBING TOPOGRAPHIC MAPS AND SYMBOLS IS AVAILABLE ON REQUEST

FEB 9 1955

2665