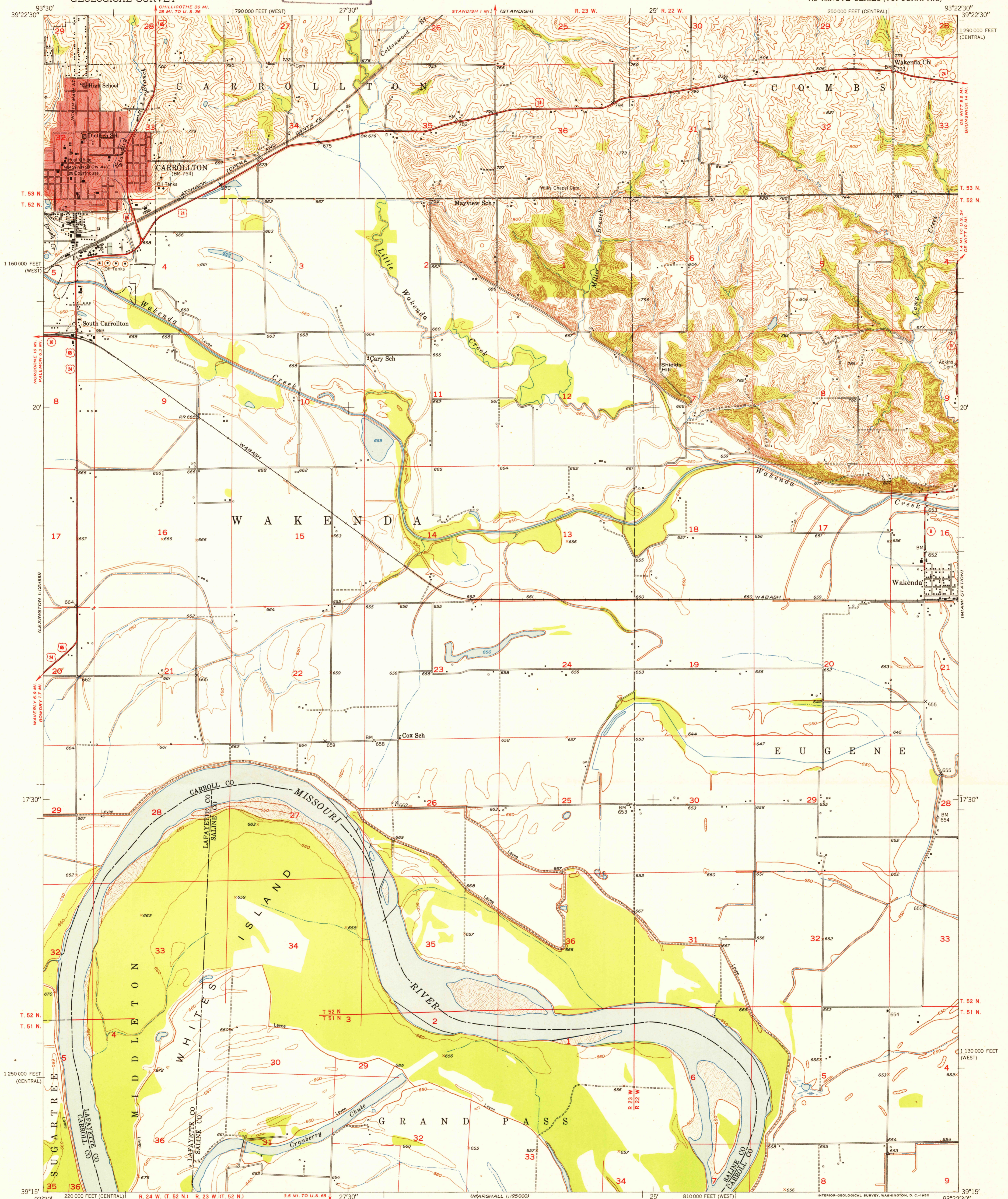


UNITED STATES
DEPARTMENT OF THE INTERIOR
GEOLOGICAL SURVEY

FILE COPY
Inspection and Editing

CARROLLTON EAST QUADRANGLE
MISSOURI
7.5 MINUTE SERIES (TOPOGRAPHIC)



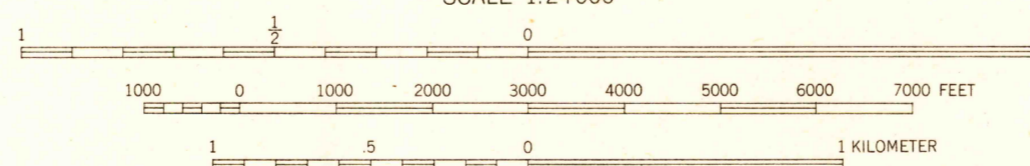
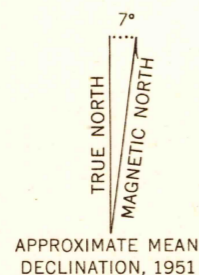
Mapped, edited, and published by the Geological Survey
as part of the Department of the Interior program
for the development of the Missouri River Basin

Control by USGS, USC&GS, and USCE

Topography by multiplex methods from aerial photographs
taken 1947, and by plane-table surveys 1950
Field check 1951

Polyconic projection. 1927 North American datum
10,000-foot grids based on Missouri coordinate system,
central and west zones

Red tint indicates area in which only
landmark buildings are shown



CONTOUR INTERVAL 10 FEET
DATUM IS MEAN SEA LEVEL

THIS MAP COMPLIES WITH NATIONAL MAP ACCURACY STANDARDS
FOR SALE BY U. S. GEOLOGICAL SURVEY, FEDERAL CENTER, DENVER, COLORADO OR WASHINGTON 25, D. C.
AND BY THE MISSOURI GEOLOGICAL SURVEY, ROLLA, MISSOURI
A FOLDER DESCRIBING TOPOGRAPHIC MAPS AND SYMBOLS IS AVAILABLE ON REQUEST

USGS
Historical File
Topographic Division

ROAD CLASSIFICATION
Heavy-duty... 1 LANE 16 LANE Light-duty...
Medium-duty... 1 LANE 16 LANE Unimproved dirt...
U. S. Route State Route

FILE COPY
Inspection and Editing

CARROLLTON EAST, MO.
N3915-W9322.5/7.5

1951