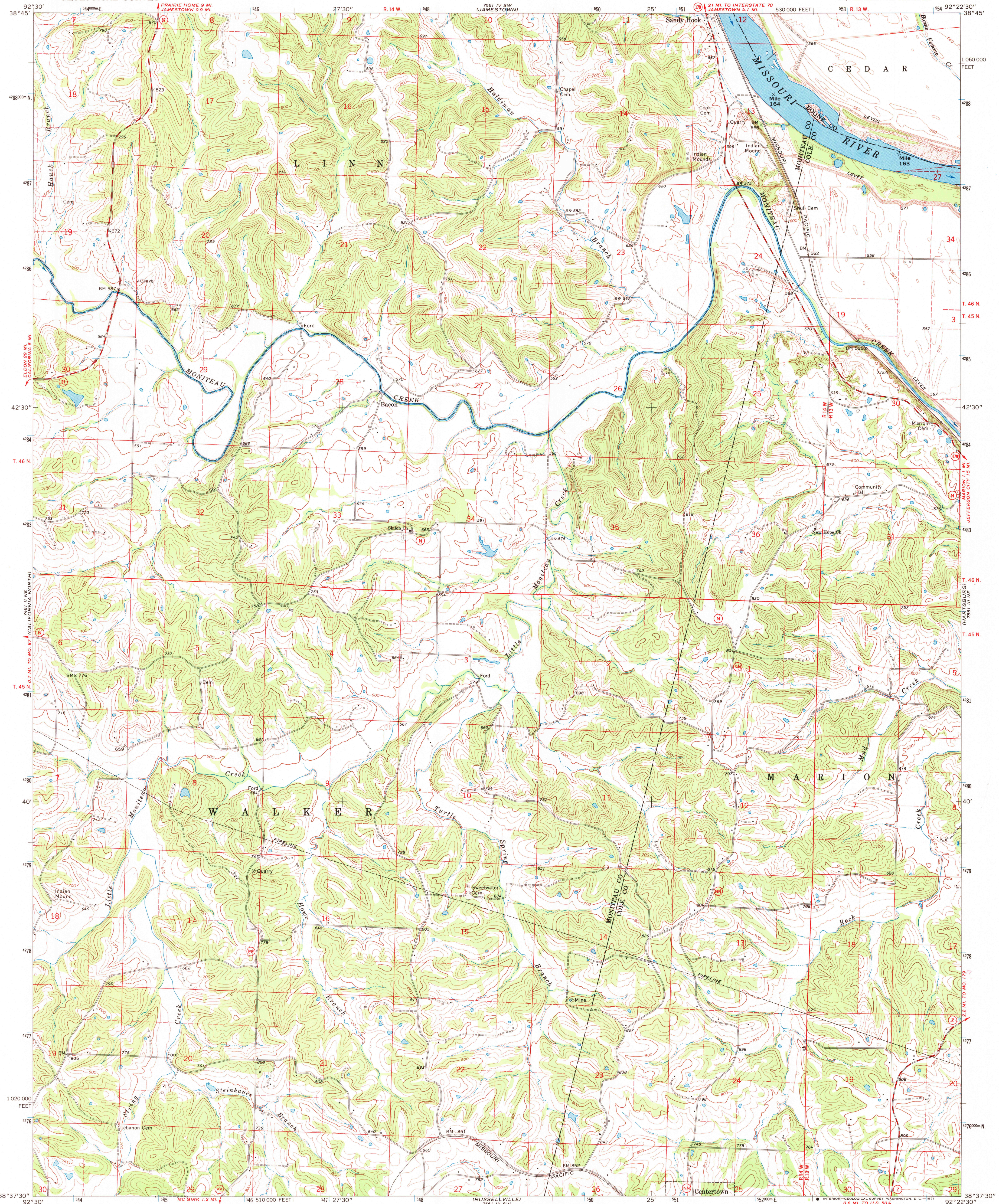
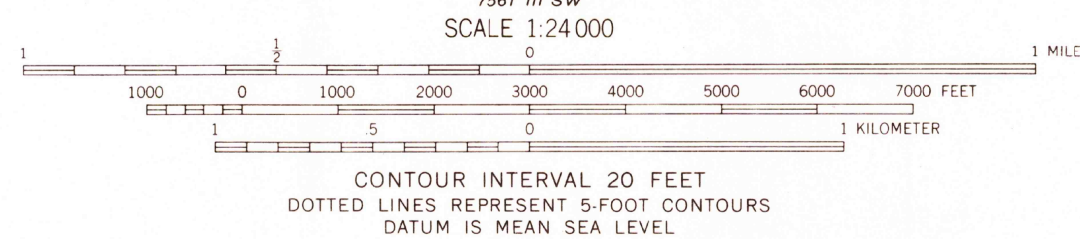
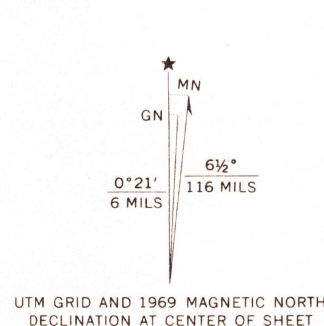


UNITED STATES  
DEPARTMENT OF THE INTERIOR  
GEOLOGICAL SURVEY

CENTERTOWN NW QUADRANGLE  
MISSOURI  
7.5 MINUTE SERIES (TOPOGRAPHIC)  
NW 1/4 CENTERTOWN 15' QUADRANGLE



Mapped, edited, and published by the Geological Survey  
Control by USGS and USC&GS  
Topography by photogrammetric methods from aerial  
photographs taken 1967 and planetable surveys 1969  
Polyconic projection. 1927 North American datum  
10,000-foot grid based on Missouri coordinate system, central zone  
1000-meter Universal Transverse Mercator grid ticks,  
zone 15, shown in blue  
Fine red dashed lines indicate selected fence and field lines where  
generally visible on aerial photographs. This information is unchecked



THIS MAP COMPLIES WITH NATIONAL MAP ACCURACY STANDARDS  
FOR SALE BY U. S. GEOLOGICAL SURVEY, DENVER, COLORADO 80225, OR WASHINGTON, D. C. 20242  
AND BY THE MISSOURI GEOLOGICAL SURVEY, ROLLA, MISSOURI 65401  
A FOLDER DESCRIBING TOPOGRAPHIC MAPS AND SYMBOLS IS AVAILABLE ON REQUEST

USGS  
Historical File  
Topographic Division



ROAD CLASSIFICATION  
Secondary highway, all weather, Light-duty road, all weather,  
hard surface, improved surface  
Unimproved road, fair or dry  
weather  
State Route

U.S.G.S.  
TOPOGRAPHIC DIVISION

CENTERTOWN NW, MO.  
NW 1/4 CENTERTOWN 15' QUADRANGLE  
N3837.5-W9222.5/7.5  
1969  
AMS 7561 III NW-SERIES V879

JUN 23 1971