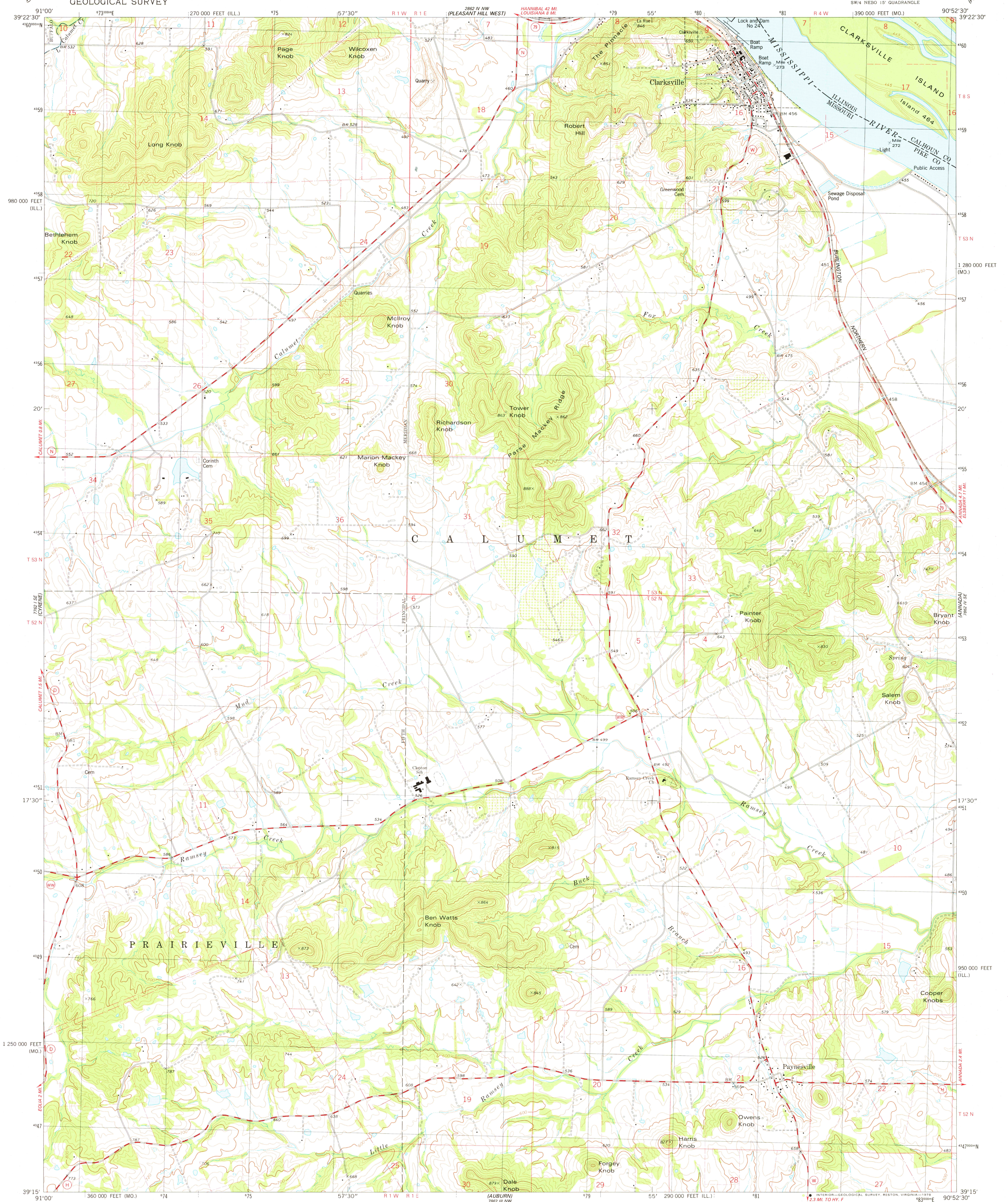


UNITED STATES
DEPARTMENT OF THE INTERIOR
GEOLOGICAL SURVEY

CLARKSVILLE QUADRANGLE
MISSOURI-ILLINOIS
7.5 MINUTE SERIES (TOPOGRAPHIC)

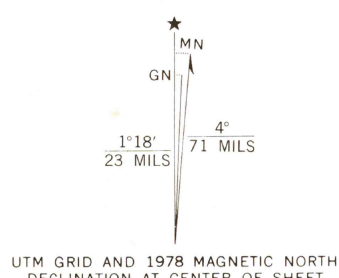


Mapped, edited, and published by the Geological Survey

Control by USGS and NOS/NOAA
Topography by photogrammetric methods from aerial photographs
taken 1972 and 1974 and in part by the Corps of Engineers
Field checked 1973. Map edited 1978

Projection: Missouri coordinate system, east zone
(transverse Mercator)
10,000-foot grid ticks based on Missouri coordinate
system, east zone, and Illinois coordinate system, west zone
1,000-meter Universal Transverse Mercator grid, zone 15
1927 North American datum

Fine red dashed lines indicate selected fence and field lines where
generally visible on aerial photographs. This information is unchecked



THIS MAP COMPLIES WITH NATIONAL MAP ACCURACY STANDARDS
FOR SALE BY U. S. GEOLOGICAL SURVEY, DENVER, COLORADO 80225, OR RESTON, VIRGINIA 22092,
AND THE DIVISION OF RESEARCH AND TECHNICAL INFORMATION
MISSOURI DEPARTMENT OF NATURAL RESOURCES, ROLLA, MISSOURI 65401
AND STATE GEOLOGICAL SURVEY, URBANA, ILLINOIS 61801
A FOLDER DESCRIBING TOPOGRAPHIC MAPS AND SYMBOLS IS AVAILABLE ON REQUEST

ROAD CLASSIFICATION
Primary highway, hard surface
Secondary highway, hard surface
Unimproved road
Interstate Route
U. S. Route
State Route

SEP 18 1978
USGS CLARKSVILLE, MO.-ILL.
SW 4 NEBO 15' QUADRANGLE
N3915-W9052.5/7.5
1978
AMS 7802 IV SW-SERIES V879