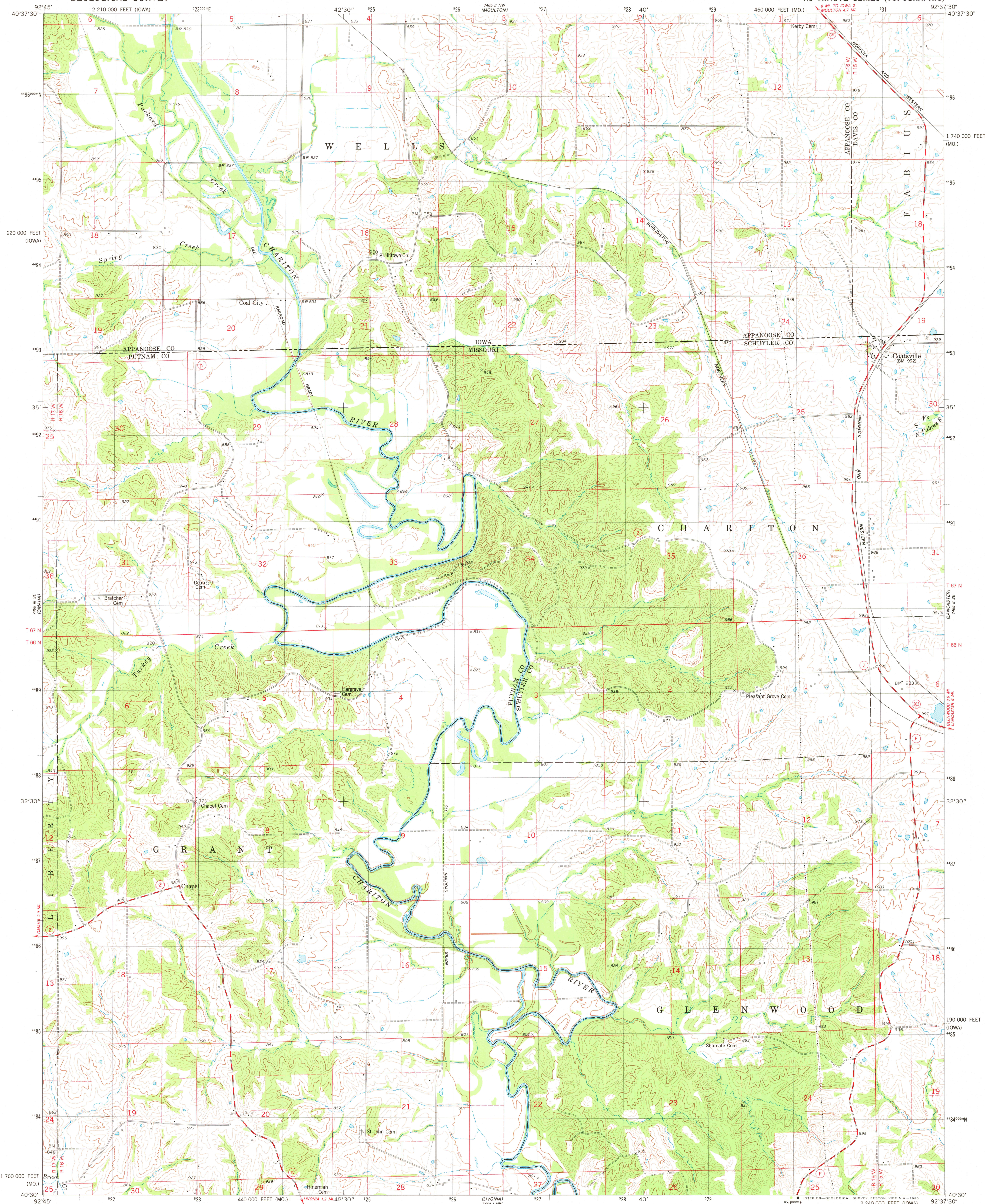


UNITED STATES
DEPARTMENT OF THE INTERIOR
GEOLOGICAL SURVEY

COATSVILLE QUADRANGLE
MISSOURI-IOWA
7.5 MINUTE SERIES (TOPOGRAPHIC)



Mapped, edited, and published by the Geological Survey

Control by USGS and NOS/NOAA

Topography by photogrammetric methods from aerial photographs

taken 1974. Field checked 1976. Map edited 1979

Projection: Missouri coordinate system, central zone

(transverse Mercator)

10,000-foot grid ticks based on Missouri coordinate system,

central zone and Iowa coordinate system, south zone

1000-meter Universal Transverse Mercator grid, zone 15

1927 North American datum

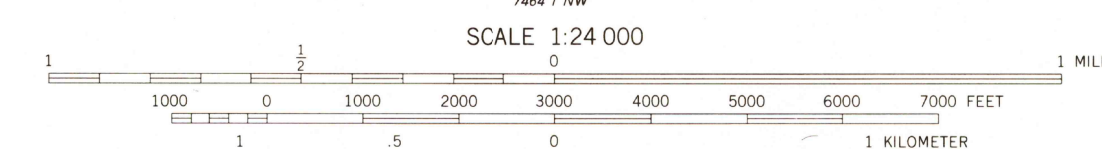
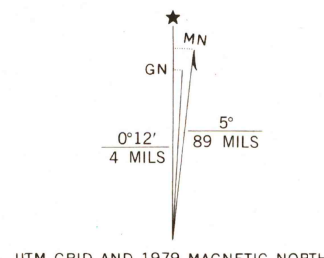
To place on the predicted North American Datum 1983

move the projection lines 2 meters north and

15 meters east as shown by dashed corner ticks

Fine red dashed lines indicate selected fence and field lines where

generally visible on aerial photographs. This information is unchecked



CONTOUR INTERVAL 20 FEET
DOTTED LINES REPRESENT 10-FOOT CONTOURS
NATIONAL GEODETIC VERTICAL DATUM OF 1929

THIS MAP COMPLIES WITH NATIONAL MAP ACCURACY STANDARDS
FOR SALE BY U. S. GEOLOGICAL SURVEY, DENVER, COLORADO 80225, OR RESTON, VIRGINIA 22092,
AND THE DIVISION OF GEOLOGY AND LAND SURVEY
MISSOURI DEPARTMENT OF NATURAL RESOURCES, ROLLA, MISSOURI 65401
AND IOWA GEOLOGICAL SURVEY, IOWA CITY, IOWA 52240
A FOLDER DESCRIBING TOPOGRAPHIC MAPS AND SYMBOLS IS AVAILABLE ON REQUEST



ROAD CLASSIFICATION

Primary highway, hard surface ————
Secondary highway, hard surface ————
Unimproved road ————

Light-duty road, hard or improved surface ————
U. S. Route ————
State Route ————
Interstate Route ————

USGS
Historical File
Topographic Division

COATSVILLE, MO.-IOWA
N4030-W9237.5/7.5

1979

DMA 7465 II SW-SERIES V879

SEP 17 1980

2750