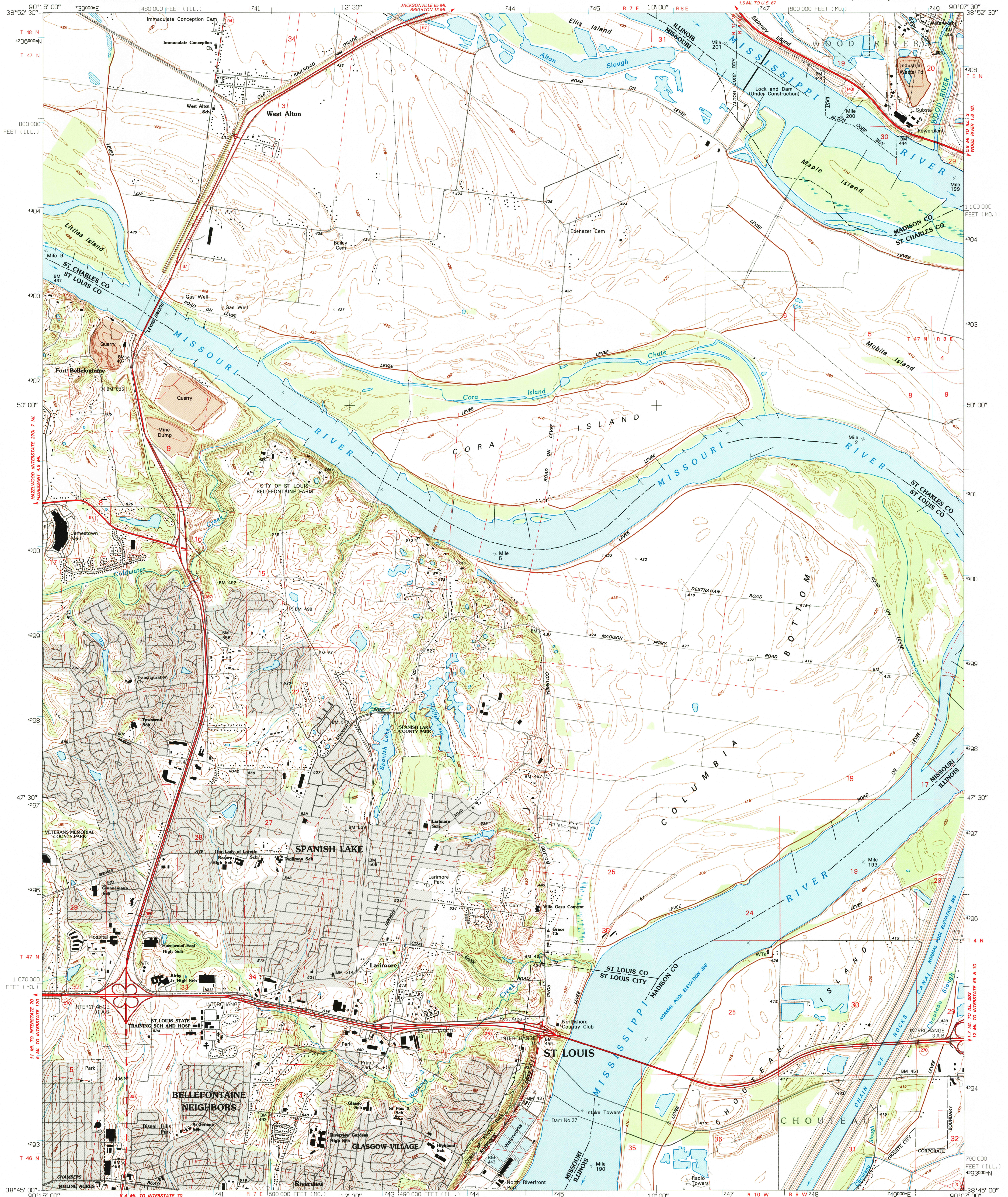


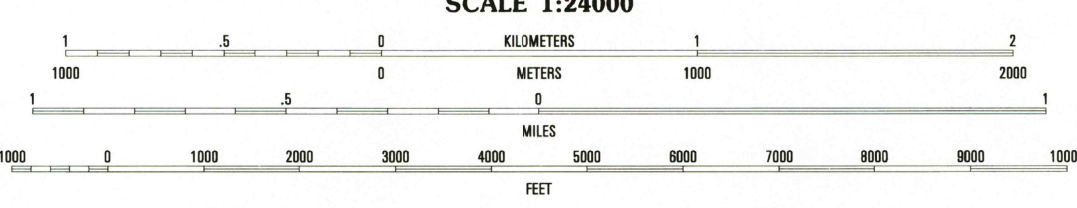
UNITED STATES
DEPARTMENT OF THE INTERIOR
GEOLOGICAL SURVEY

COLUMBIA BOTTOM QUADRANGLE
MISSOURI-ILLINOIS
7.5 MINUTE SERIES (TOPOGRAPHIC)
SW/4 ALTON 15' QUADRANGLE

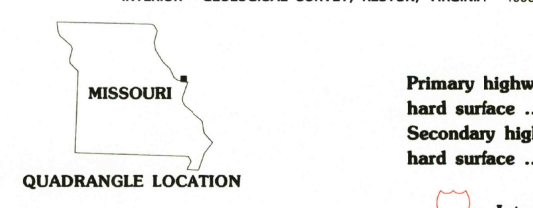


Produced by the United States Geological Survey
Control by USGS and NOS/NOAA
Planimetry by photogrammetric methods from aerial photographs taken 1941. Topography by planimetric surveys 1924 and 1951. Revised from aerial photographs taken 1988. Field checked 1993. Map edited 1994.
North American Datum of 1927 (NAD 27). Projection and blue 1000-meter ticks: Universal Transverse Mercator, zone 15 10,000-foot ticks: Missouri coordinate system, east zone and Illinois coordinate system, west zone.
North American Datum of 1983 (NAD 83) is shown by dashed corner ticks. The values of the shift between NAD 27 and NAD 83 for 7.5 minute intersections are obtainable from National Geodetic Survey NADCON software.
Gray tint indicates areas in which only landmark buildings are shown.

UTM GRID AND 1994 MAGNETIC NORTH
DECLINATION AT CENTER OF SHEET



CONTOUR INTERVAL 10 FEET
SUPPLEMENTARY CONTOUR INTERVAL 5 FEET
NATIONAL GEODETIC DATUM OF 1929
COMPLIES WITH U.S. GEOLOGICAL SURVEY STANDARDS FOR SPATIAL ACCURACY - CLASS 2
FOR SALE BY U.S. GEOLOGICAL SURVEY, DENVER, COLO. 80225, OR RESTON, VIRGINIA 22092
AND DIVISION OF GEOLOGY AND LAND SURVEY
MISSOURI DEPARTMENT OF NATURAL RESOURCES, ROLLA, MISSOURI 65401
AND ILLINOIS GEOLOGICAL SURVEY, CHAMPAIGN, ILLINOIS 61820
A FOLDER DESCRIBING TOPOGRAPHIC MAPS AND SYMBOLS IS AVAILABLE ON REQUEST



1	2	3
1 Elsie	2 Alton	3 Bethalto
4 Florissant	5 Wood River	6 Clayton
7 Granite City	8 Monks Mound	

ROAD CLASSIFICATION
Primary highway
hard surface
Secondary highway
hard surface
Interstate Route
U.S. Route
State Route

COLUMBIA BOTTOM, MO.-ILL.
SW/4 ALTON 15' QUADRANGLE
38090-G2-TF-024

1994

DMA 7961 I SW - SERIES V879

USGS AND HISTORICAL
MAP ARCHIVES
JAN 19 1995
REC'D FILE COPY