

UNITED STATES  
DEPARTMENT OF THE INTERIOR  
GEOLOGICAL SURVEY

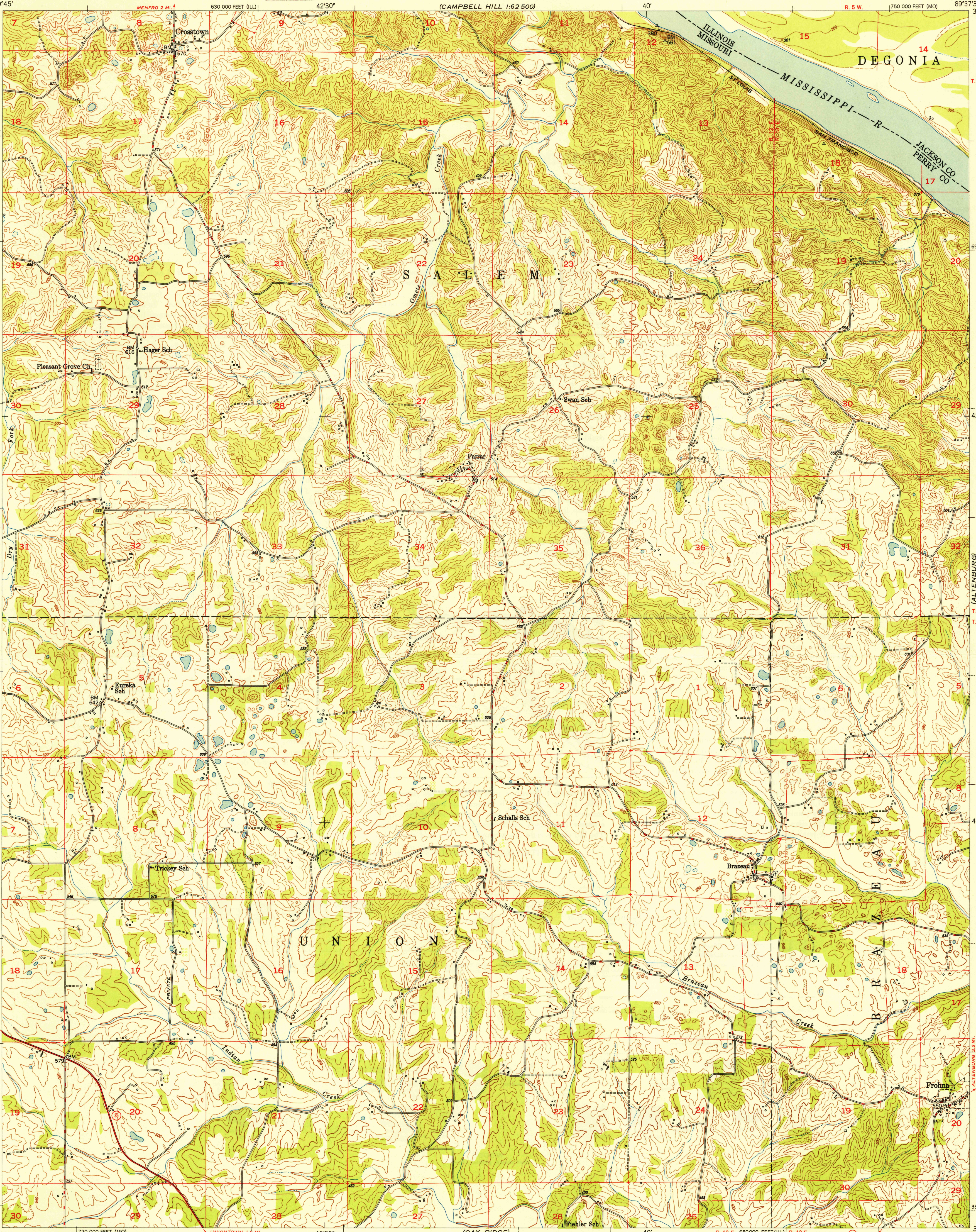
U. S. G. S.  
FILE COPY  
Inspection and Editing.

UNITED STATES  
DEPARTMENT OF THE ARMY  
CORPS OF ENGINEERS  
(CAMPBELL HILL 1:62 500)

CROSSTOWN QUADRANGLE  
MISSOURI-ILLINOIS  
7.5 MINUTE SERIES (TOPOGRAPHIC)

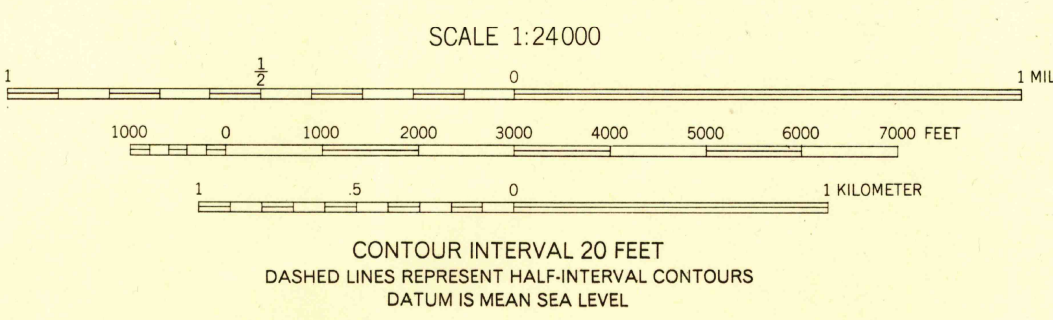
CAMPBELL HILL  
1:62 500

U. S. G. S.  
FILE COPY  
Inspection and Editing.



Maped, edited, and published by the Geological Survey  
Control by Mississippi River Commission, USED, USC&GS, and USGS  
Topography from aerial photographs by multiplex methods  
and by plane-table surveys 1947  
Aerial photographs taken 1946  
Polyconic projection, 1927 North American Datum  
10,000 foot grid based on Illinois Coordinate System,  
West Zone, and Missouri Coordinate System, East Zone

TRUE NORTH  
MAGNETIC NORTH  
APPROXIMATE MEAN  
DECLINATION, 1947



USCS  
Historical File  
Topographic Division

ROAD CLASSIFICATION	
HARD-SURFACE ALL WEATHER ROADS	DRY WEATHER ROADS
Heavy-duty 4 LANE 6 LANE	Improved dirt
Medium-duty 4 LANE 6 LANE	Unimproved dirt
Loose-surface or narrow hard-surface	
U. S. Route	State Route

WOODLAND

Woods—Brushwood  
Scrub  
Orchard  
Vineyard

U. S. G. S.  
FILE COPY  
Inspection and Editing.

CROSSTOWN, MO.-ILL.  
N3737.5-W8937.5/7.5

PRINTED 1948 OCT 4 1948

THIS MAP COMPLIES WITH NATIONAL MAP ACCURACY STANDARDS  
FOR SALE BY U. S. GEOLOGICAL SURVEY, WASHINGTON 25, D. C.