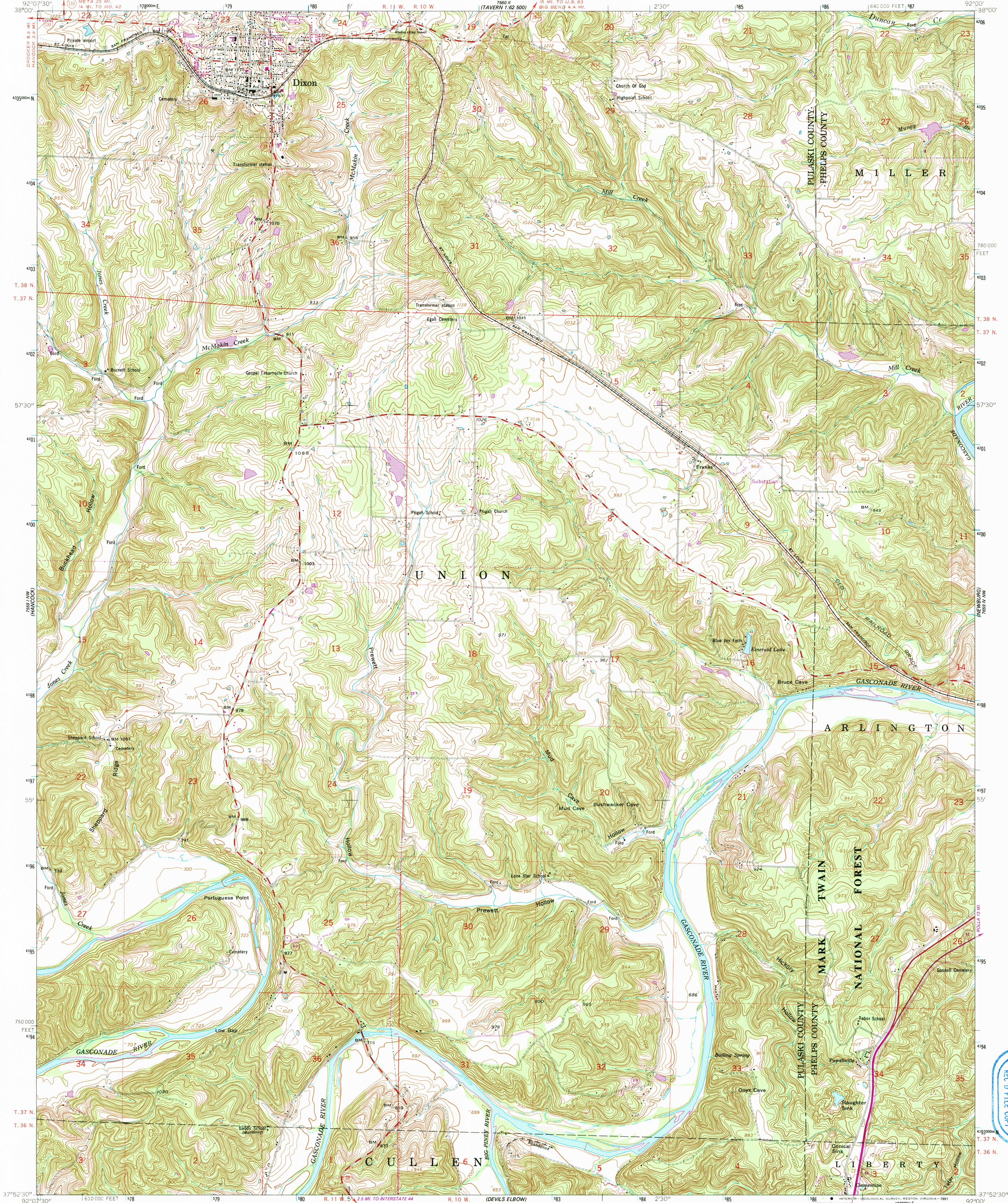


UNITED STATES
DEPARTMENT OF THE INTERIOR
GEOLOGICAL SURVEY

UNITED STATES
DEPARTMENT OF THE ARMY
CORPS OF ENGINEERS

DIXON QUADRANGLE
MISSOURI
7.5 MINUTE SERIES (TOPOGRAPHIC)
NE 1/4 WAYNESVILLE 15' QUADRANGLE



Mapped by the Army Map Service
Published for civil use by the Geological Survey
Control by USGS, USC&GS, and USCE
Topography from aerial photographs by photogrammetric methods
Aerial photographs taken 1953. Field check 1954
Polyconic projection. 1927 North American datum.
10,000-foot grid based on Missouri coordinate system, central zone
1000-meter Universal Transverse Mercator grid ticks,
zone 15, shown in blue
Dashed land lines indicate approximate locations
Unchecked elevations are shown in brown
To place on the predicted North American Datum 1983
move the projection lines 2 meters south and
14 meters east as shown by dashed corner ticks

Map photinspected 1982
No major culture or drainage changes observed

SCALE 1:24 000
CONTOUR INTERVAL 10 FEET
NATIONAL GEODETIC VERTICAL DATUM OF 1929

THIS MAP COMPLIES WITH NATIONAL MAP ACCURACY STANDARDS
FOR SALE BY U.S. GEOLOGICAL SURVEY, DENVER, COLORADO 80225, OR RESTON, VIRGINIA 22092,
AND THE DIVISION OF RESEARCH AND TECHNICAL INFORMATION
MISSOURI DEPARTMENT OF NATURAL RESOURCES, ROLLA, MISSOURI 65401
A FOLDER DESCRIBING TOPOGRAPHIC MAPS AND SYMBOLS IS AVAILABLE ON REQUEST



Revisions shown in purple compiled by the
Geological Survey from aerial photographs
taken 1976. This information not field checked

ROAD CLASSIFICATION
Heavy-duty ——— Light-duty ———
Medium-duty ——— Unimproved dirt ———
U.S. Route ——— State Route ———
Interstate Route ———

DIXON, MO.
NE 1/4 WAYNESVILLE 15' QUADRANGLE
37092.H1.TF-024
PHOTOINSPECTED 1982
1954
PHOTOREVISED 1976
DMA 7559 I NE-SERIES V879

SEP 06 1991
REC'D FILE COPY