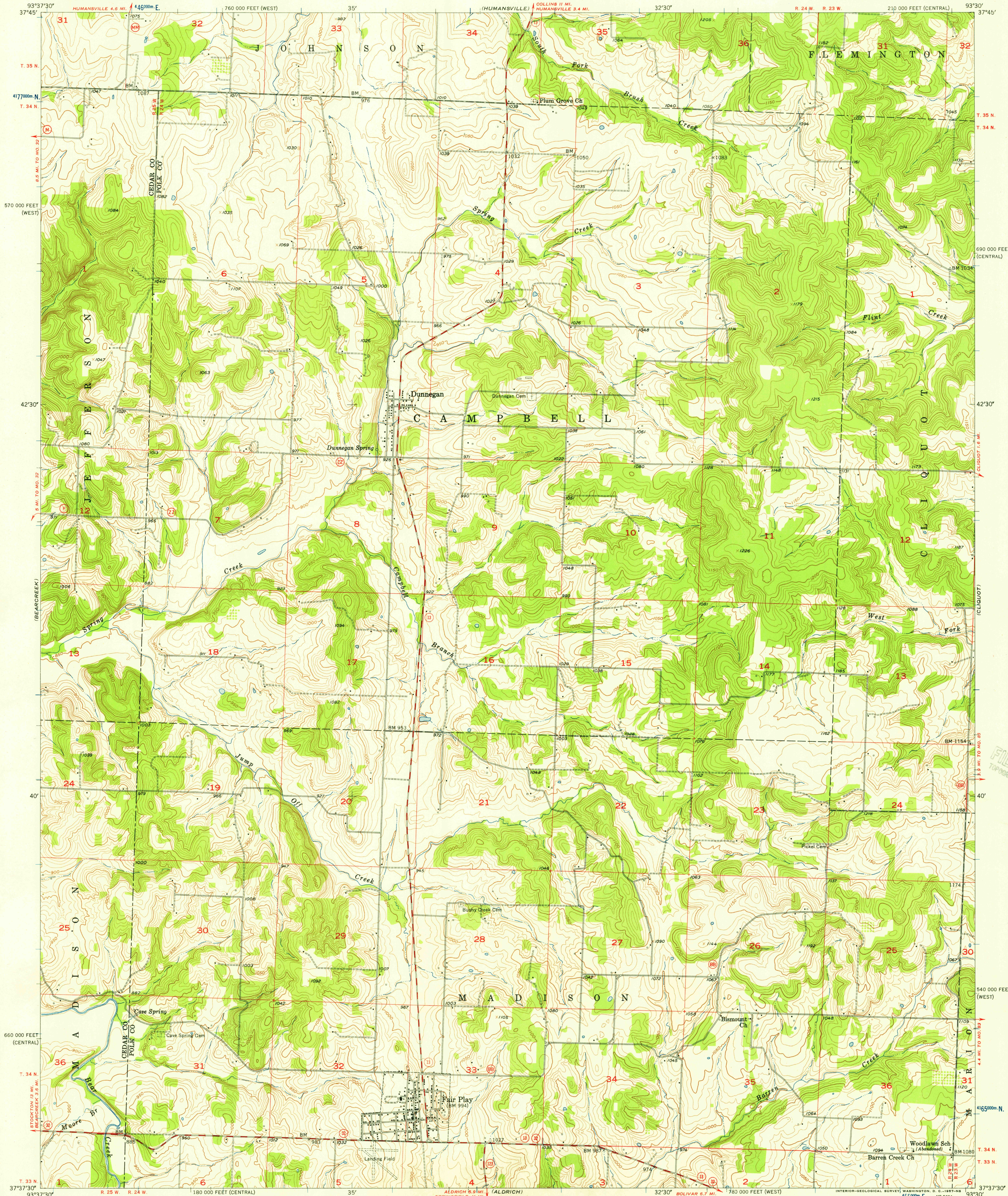


UNITED STATES
DEPARTMENT OF THE INTERIOR
GEOLOGICAL SURVEY

FAIR PLAY QUADRANGLE
MISSOURI
7.5 MINUTE SERIES (TOPOGRAPHIC)



Mapped, edited, and published by the Geological Survey as part of the Department of the Interior program for the development of the Missouri River Basin. Control by USGS and USGS&GS. Topography from aerial photographs by multiplex methods. Aerial photographs taken 1950. Field check 1956. Polyconic projection. 1927 North American datum. 10,000-foot grids based on Missouri coordinate system, central and west zones. 1000-meter Universal Transverse Mercator grid ticks, zone 15, shown in blue.

TRUE NORTH
MAGNETIC NORTH
APPROXIMATE MEAN DECLINATION, 1956

SCALE 1:24,000
1 0 1000 2000 3000 4000 5000 6000 7000 FEET
1 5 0 1 KILOMETER
CONTOUR INTERVAL 10 FEET
DATUM IS MEAN SEA LEVEL

THIS MAP COMPLIES WITH NATIONAL MAP ACCURACY STANDARDS
FOR SALE BY U. S. GEOLOGICAL SURVEY, DENVER 2, COLORADO OR WASHINGTON 25, D. C.
AND BY THE MISSOURI GEOLOGICAL SURVEY, ROLA, MISSOURI
A FOLDER DESCRIBING TOPOGRAPHIC MAPS AND SYMBOLS IS AVAILABLE ON REQUEST



QUADRANGLE LOCATION

ROAD CLASSIFICATION
Medium-duty ——— Light-duty ———
Unimproved dirt ———
State Route

U.S.G.S.
FILE COPY
TOPOGRAPHIC DIVISION

FAIR PLAY, MO.
N3737.5-W9330/7.5
1956

U.S.G.S.
FILE COPY
TOPOGRAPHIC DIVISION

MAY 7 1957