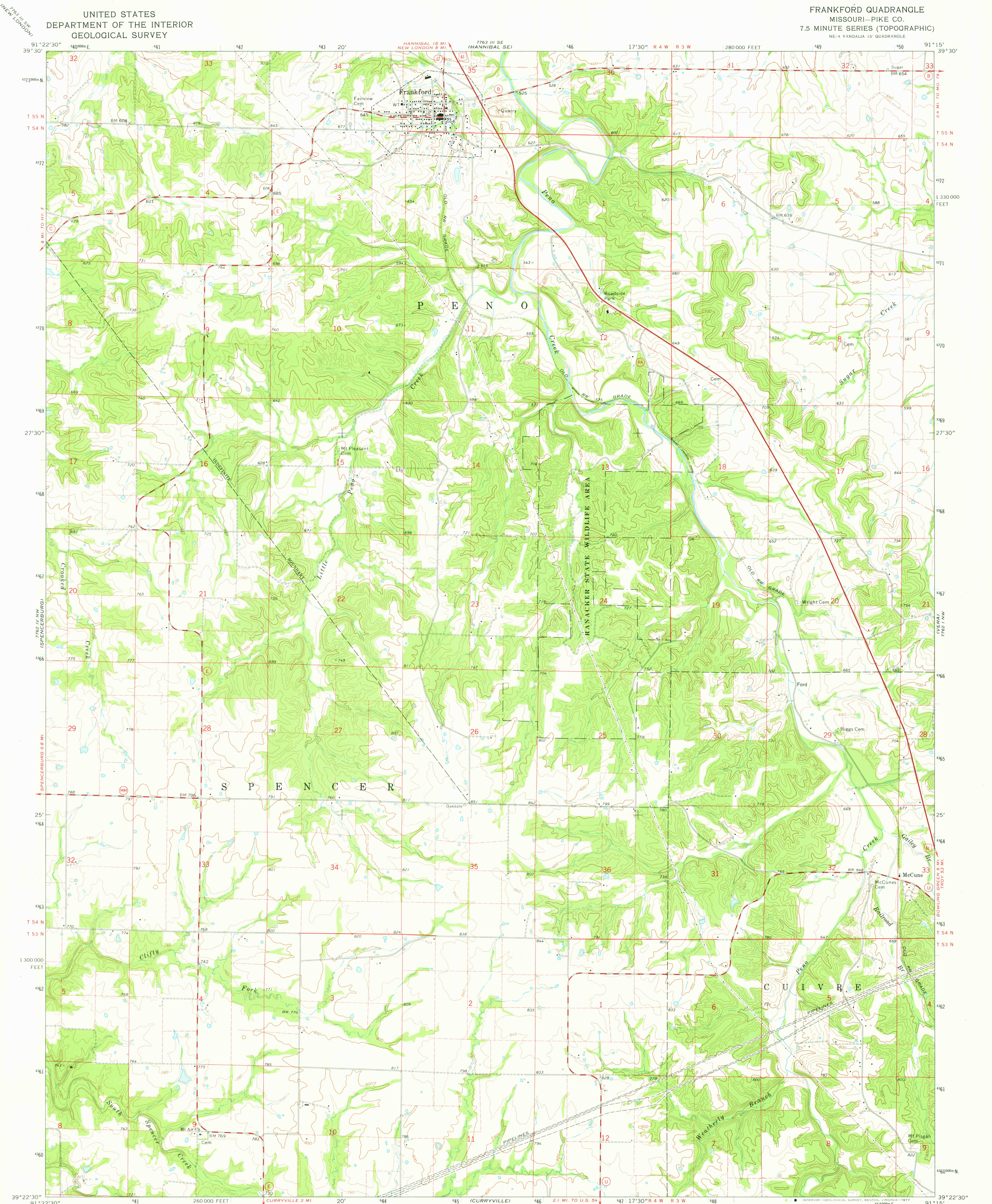


UNITED STATES  
DEPARTMENT OF THE INTERIOR  
GEOLOGICAL SURVEY

FRANKFORD QUADRANGLE  
MISSOURI—PIKE CO.  
7.5 MINUTE SERIES (TOPOGRAPHIC)  
NE 1/4 VANDALIA 15' QUADRANGLE



Mapped, edited, and published by the Geological Survey

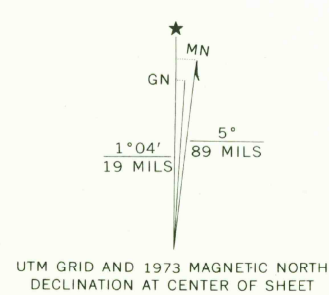
Control by USGS and NOS/NOAA

Topography by photogrammetric methods from aerial photographs taken 1972. Field checked 1973

Projection and 10,000-foot grid ticks: Missouri coordinate system, east zone (transverse Mercator)

1000-metre Universal Transverse Mercator grid ticks, zone 15, shown in blue. 1927 North American datum

Fine red dashed lines indicate selected fence and field lines where generally visible on aerial photographs. This information is unchecked



SCALE 1:24,000  
CONTOUR INTERVAL 20 FEET  
NATIONAL GEODETIC VERTICAL DATUM OF 1929

THIS MAP COMPLIES WITH NATIONAL MAP ACCURACY STANDARDS  
FOR SALE BY U.S. GEOLOGICAL SURVEY, DENVER, COLORADO 80225, OR RESTON, VIRGINIA 22092  
AND BY THE DIVISION OF RESEARCH AND TECHNICAL INFORMATION  
MISSOURI DEPARTMENT OF NATURAL RESOURCES, ROLLA, MISSOURI 65401  
A FOLDER DESCRIBING TOPOGRAPHIC MAPS AND SYMBOLS IS AVAILABLE ON REQUEST



ROAD CLASSIFICATION  
Primary highway, hard surface  
Secondary highway, hard surface  
Unimproved road  
Interstate Route  
U. S. Route  
State Route

U.S.G.S.  
Historical File  
Topographic Division

FRANKFORD, MO.  
NE 1/4 VANDALIA 15' QUADRANGLE  
N3922.5—W9115.7/5

1973

AMS 7762 IV NE—SERIES V879

JUL 27 1977

2900