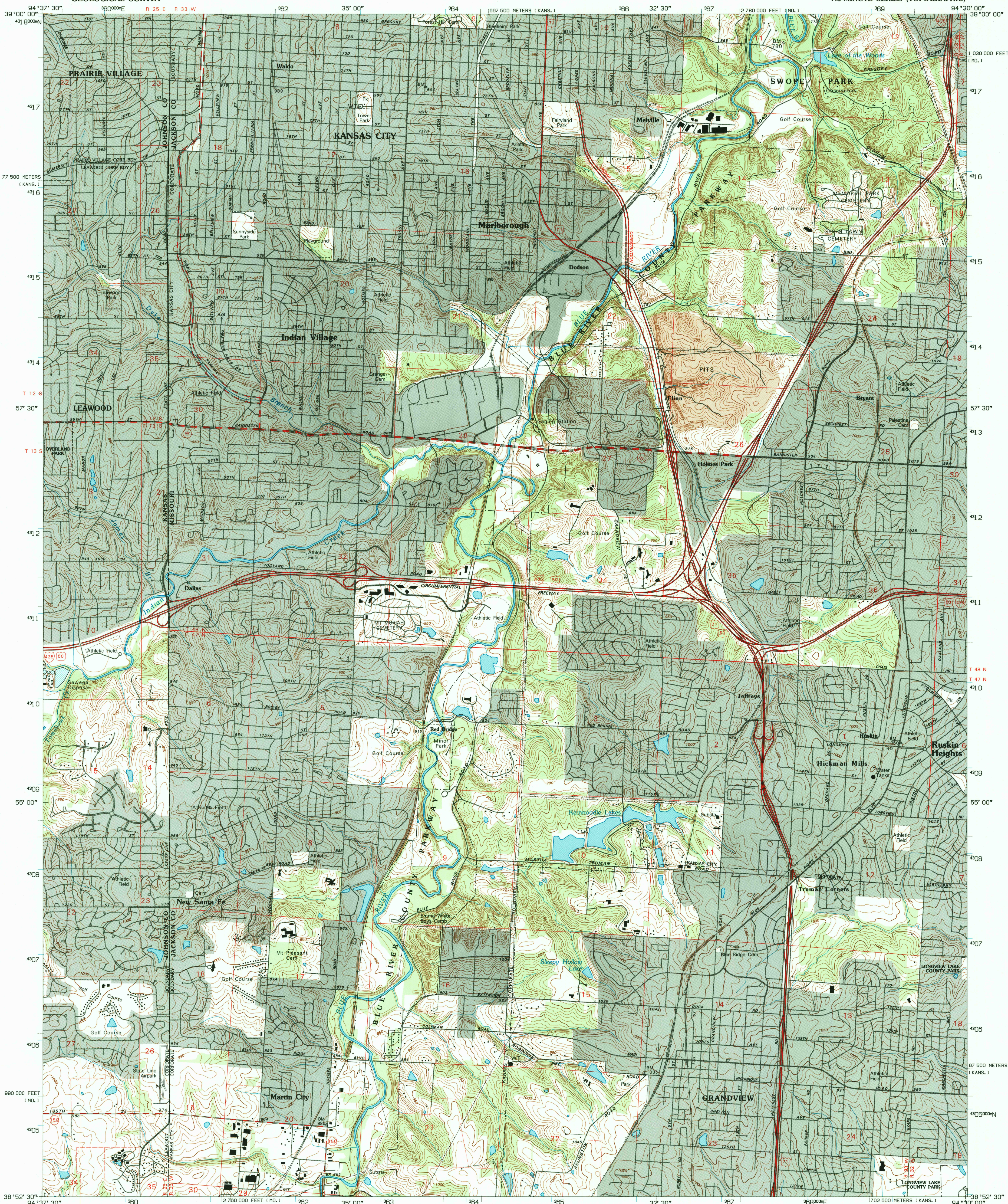
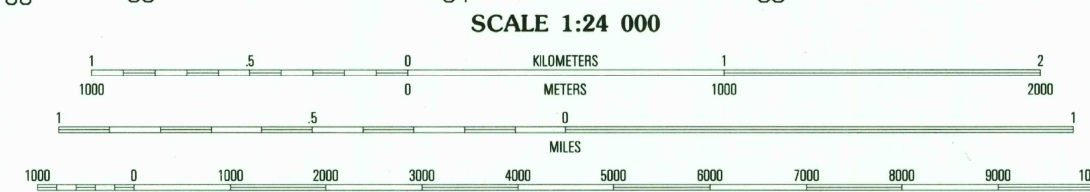
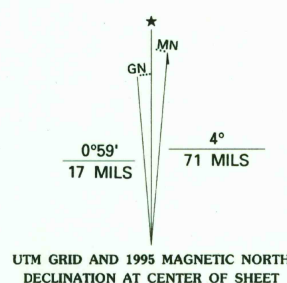


UNITED STATES
DEPARTMENT OF THE INTERIOR
GEOLOGICAL SURVEY

GRANDVIEW QUADRANGLE
MISSOURI-KANSAS
7.5-MINUTE SERIES (TOPOGRAPHIC)



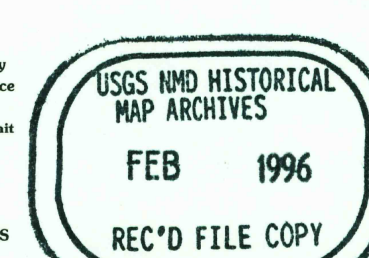
Produced by the United States Geological Survey
Compiled by photogrammetric methods from imagery dated 1955
Revised from imagery dated 1962. Field checked 1964
Revised from imagery dated 1990-91. PLSS and survey control
current as of 1964. Map edited 1995. Contours not revised
Contours that conflict with revised planimetry are dashed
North American Datum of 1983 (NAD 83). Projection and
blue 1000-meter ticks: Universal Transverse Mercator, zone 15
10 000-foot ticks: Missouri Coordinate System of 1983 (west zone)
2 500-meter ticks: Kansas Coordinate System of 1983 (north zone)
North American Datum of 1927 (NAD 27) is shown by dashed
corner ticks. The values of the shift between NAD 83 and NAD 27
for 7.5-minute intersections are obtainable from National Geodetic
Survey NADCON software
There may be private inholdings within the boundaries of
the National or State reservations shown on this map



QUADRANGLE LOCATION

1	2	3
4	5	6
7	8	9

1 Shawnee
2 Kansas City
3 Independence
4 Lenexa
5 Lees Summit
6 Sullivant
7 Belton
8 Raymore



GRANDVIEW, MO-KS
38094-15-TF-024
1991

DMA 7061 I NE-SERIES V879

