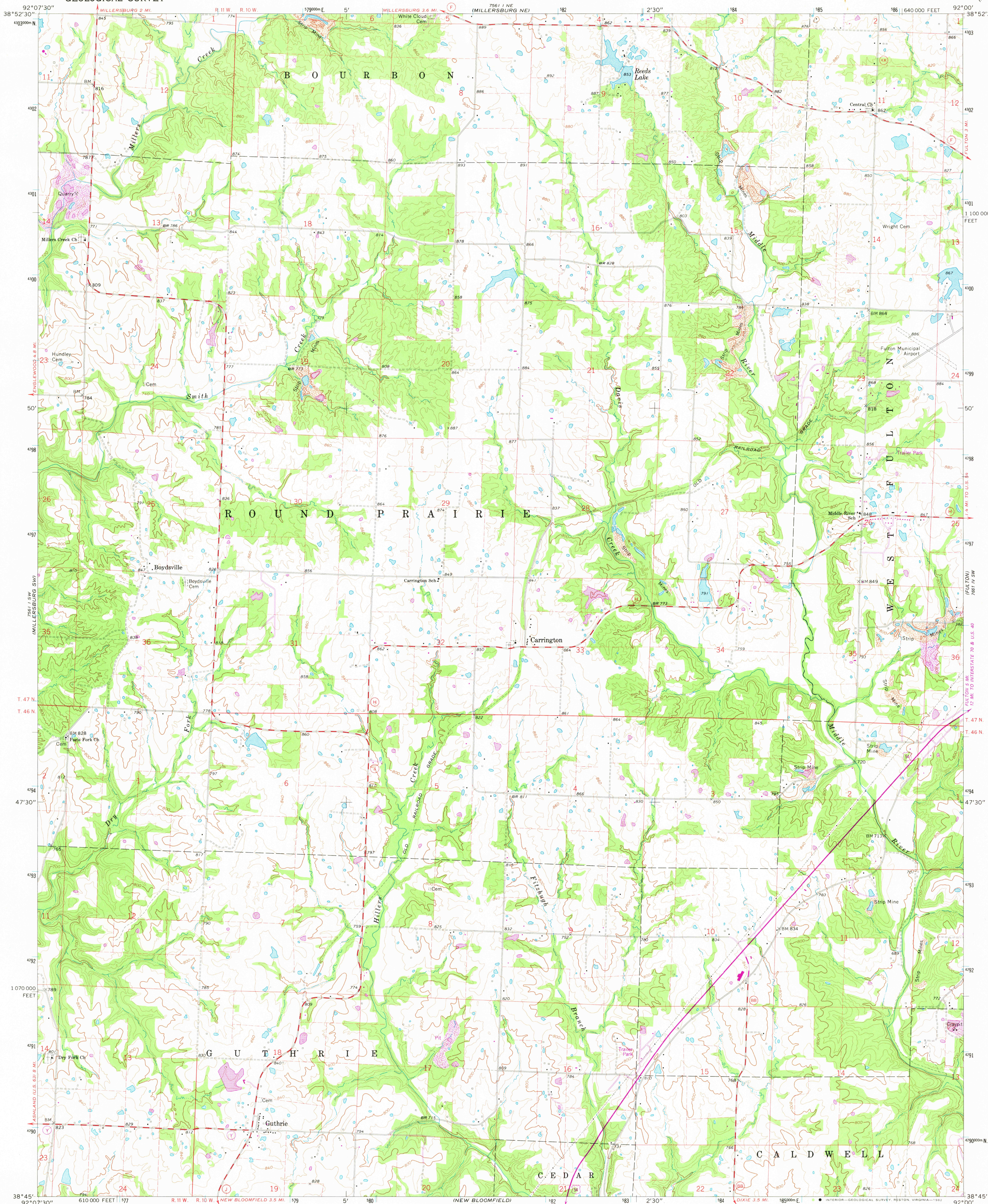


UNITED STATES  
DEPARTMENT OF THE INTERIOR  
GEOLOGICAL SURVEY

GUTHRIE QUADRANGLE  
MISSOURI—CALLAWAY CO.  
7.5 MINUTE SERIES (TOPOGRAPHIC)



Mapped, edited, and published by the Geological Survey  
Control by USGS and USC&GS

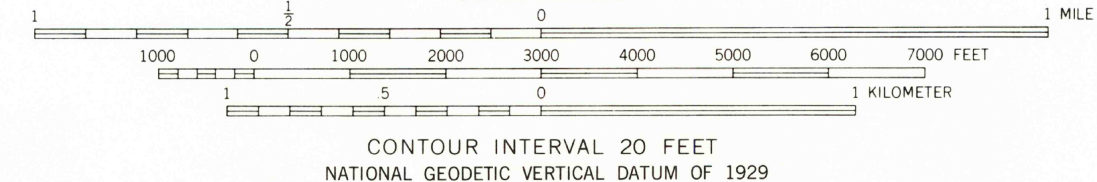
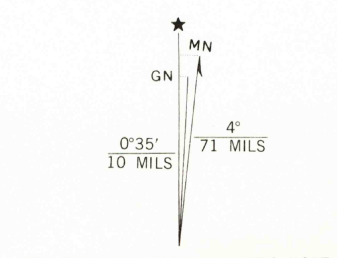
Topography by photogrammetric methods from aerial  
photographs taken 1967. Field checked 1969

Polyconic projection. 1927 North American datum  
10,000-foot grid based on Missouri coordinate system, central zone  
1000-meter Universal Transverse Mercator grid ticks,  
zone 15, shown in blue

Fine red dashed lines indicate selected fence and field lines where  
generally visible on aerial photographs. This information is unchecked

To place on the predicted North American Datum 1983  
move the projection lines 1 meter south and  
14 meters east as shown by dashed corner ticks

Revisions shown in purple compiled from aerial photographs taken  
1980. Map edited 1981. This information not field checked



THIS MAP COMPLIES WITH NATIONAL MAP ACCURACY STANDARDS  
FOR SALE BY U. S. GEOLOGICAL SURVEY, DENVER, COLORADO 80225, OR RESTON, VIRGINIA 22092,  
AND THE DIVISION OF GEOLOGY AND LAND SURVEY  
MISSOURI DEPARTMENT OF NATURAL RESOURCES, ROLLA, MISSOURI 65401  
A FOLDER DESCRIBING TOPOGRAPHIC MAPS AND SYMBOLS IS AVAILABLE ON REQUEST



RETURN TO:  
USGS NMD HISTORICAL MAP ARCHIVES

ROAD CLASSIFICATION  
Primary highway, all weather, hard surface  
Secondary highway, all weather, hard surface  
Light duty road, all weather, improved surface  
Unimproved road, fair or dry weather  
U. S. Route  
State Route

GUTHRIE, MO.  
N 3845—W 9200/7.5

1969  
PHOTOREVISED 1981  
DMA 7561 1 SE—SERIES V879

JAN 6 1982