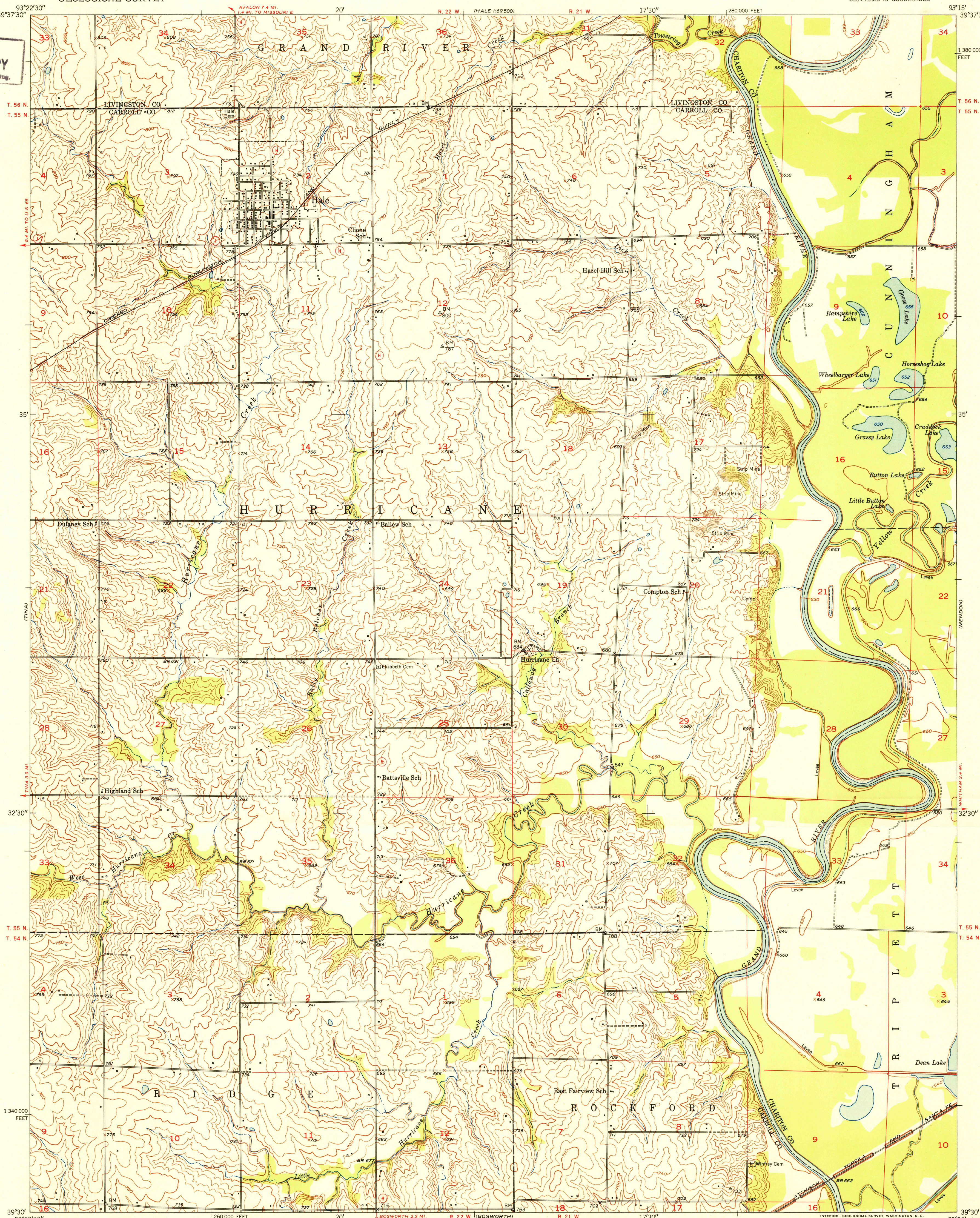


UNITED STATES
DEPARTMENT OF THE INTERIOR
GEOLOGICAL SURVEY

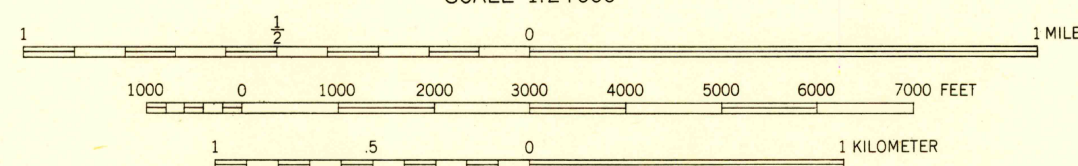
HALE QUADRANGLE
MISSOURI
7.5 MINUTE SERIES (TOPOGRAPHIC)
SE 1/4 HALE 15' QUADRANGLE

U.S.G.S.
FILE COPY
Inspection and Editing



Mapped, edited, and published by the Geological Survey
as part of the Department of the Interior program
for the development of the Missouri River Basin
Control by USGS and USC&GS
Culture and drainage in part compiled from
aerial photographs taken 1939
Topography by plane-table methods 1950
Polyconic projection, 1927 North American datum
10,000-foot grid based on Missouri coordinate system,
central zone

TRUE NORTH
MAGNETIC NORTH
APPROXIMATE MEAN
DECLINATION, 1950



CONTOUR INTERVAL 10 FEET
DATUM IS MEAN SEA LEVEL

THIS MAP COMPLIES WITH NATIONAL MAP ACCURACY STANDARDS
FOR SALE BY U. S. GEOLOGICAL SURVEY, FEDERAL CENTER, DENVER, COLORADO OR WASHINGTON 25, D. C.
AND BY THE MISSOURI GEOLOGICAL SURVEY, ROLLA, MISSOURI
A FOLDER DESCRIBING TOPOGRAPHIC MAPS AND SYMBOLS IS AVAILABLE ON REQUEST

USGS
Historical File
Topographic Division

ROAD CLASSIFICATION
Heavy-duty... 1 LANE 1 LANE
Medium-duty... 1 LANE 1 LANE
Unimproved dirt...
U. S. Route
State Route

U.S.G.S.
FILE COPY
Inspection and Editing

HALE, MO.
SE 1/4 HALE 15' QUADRANGLE
N3930-W9315/7.5

EDITION OF 1951