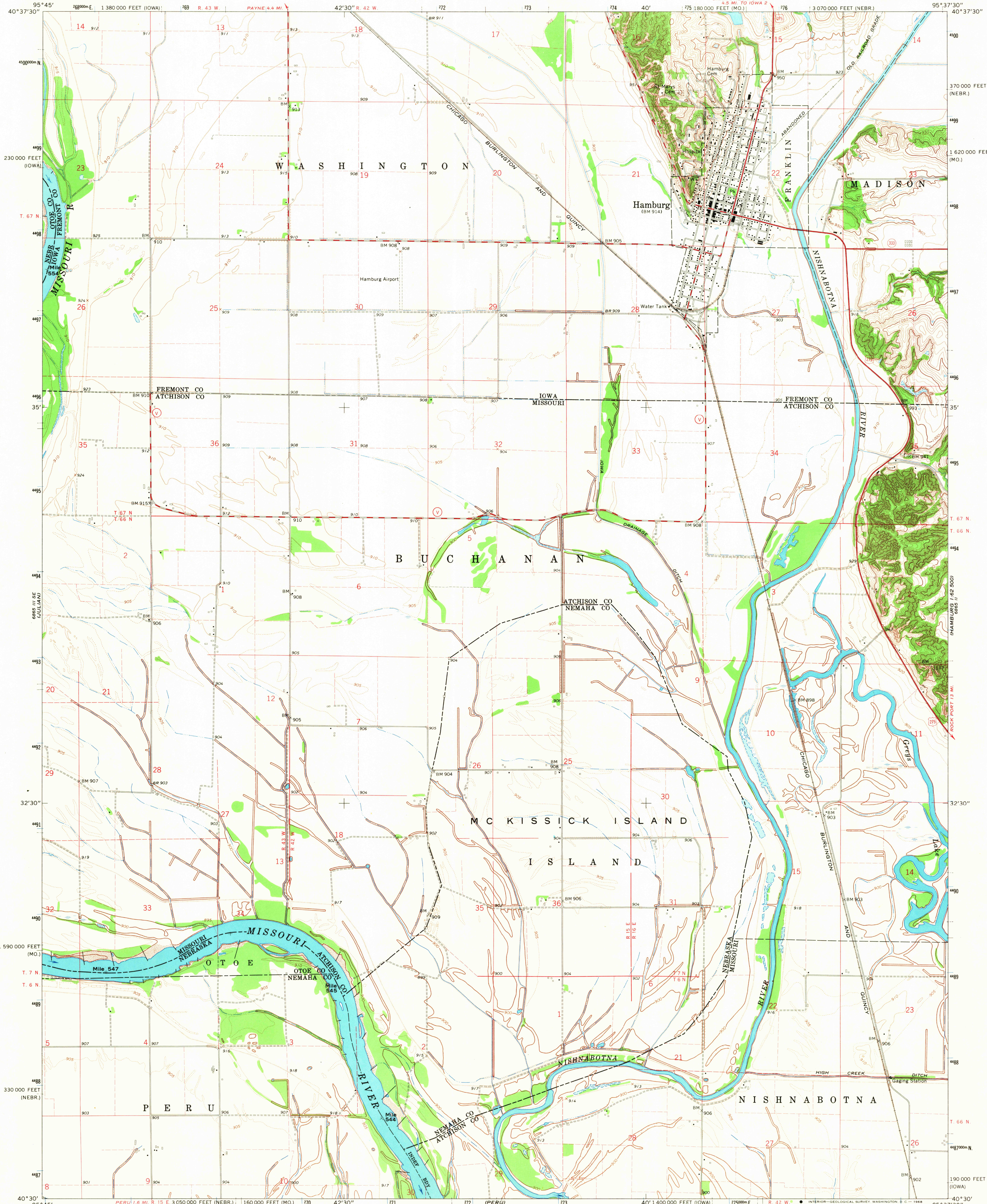


UNITED STATES
DEPARTMENT OF THE INTERIOR
GEOLOGICAL SURVEY

HAMBURG QUADRANGLE
MISSOURI-IOWA-NEBRASKA
7.5 MINUTE SERIES (TOPOGRAPHIC)
SW 1/4 HAMBURG 15' QUADRANGLE

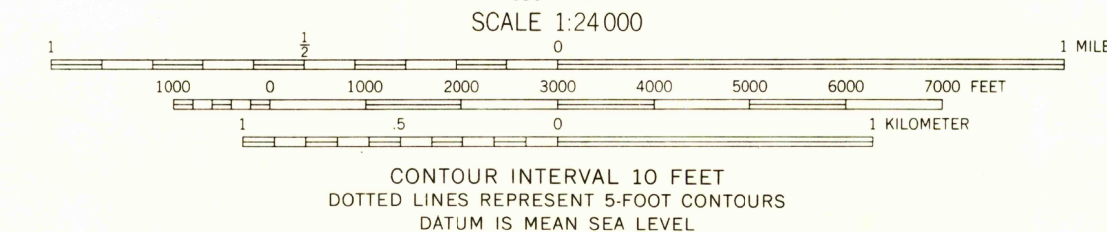


Mapped, edited, and published by the Geological Survey as part of the Department of the Interior program for the development of the Missouri River Basin Control by USGS and USC&GS.

Topography by photogrammetric methods from aerial photographs taken 1965 and planimetric surveys 1966.

Polyconic projection. 1927 North American datum 10,000-foot grids based on Missouri coordinate system, west zone, Iowa coordinate system, south zone, and Nebraska coordinate system, south zone 1000-meter Universal Transverse Mercator grid ticks, zone 15, shown in blue.

Fine red dashed lines indicate selected fence and field lines where generally visible on aerial photographs. This information is unchecked.



THIS MAP COMPLIES WITH NATIONAL MAP ACCURACY STANDARDS FOR SALE BY U. S. GEOLOGICAL SURVEY, DENVER, COLORADO 80225, OR WASHINGTON, D. C. 20242, MISSOURI GEOLOGICAL SURVEY, ROLLA, MISSOURI 65401, AND IOWA GEOLOGICAL SURVEY, IOWA CITY, IOWA 52240. A FOLDER DESCRIBING TOPOGRAPHIC MAPS AND SYMBOLS IS AVAILABLE ON REQUEST.

USGS
Historical File
Topographic Division



FILE COPY
TOPOGRAPHIC DIVISION

ROAD CLASSIFICATION	
Heavy-duty	Light-duty
Medium-duty	Unimproved dirt
U. S. Route	State Route

HAMBURG, MO.-IOWA-NEBR.
SW 1/4 HAMBURG 15' QUADRANGLE
N4030-W9537.5/7.5
1966
AMS 6865 II SW-SERIES V879

2845
JUN 25 1968