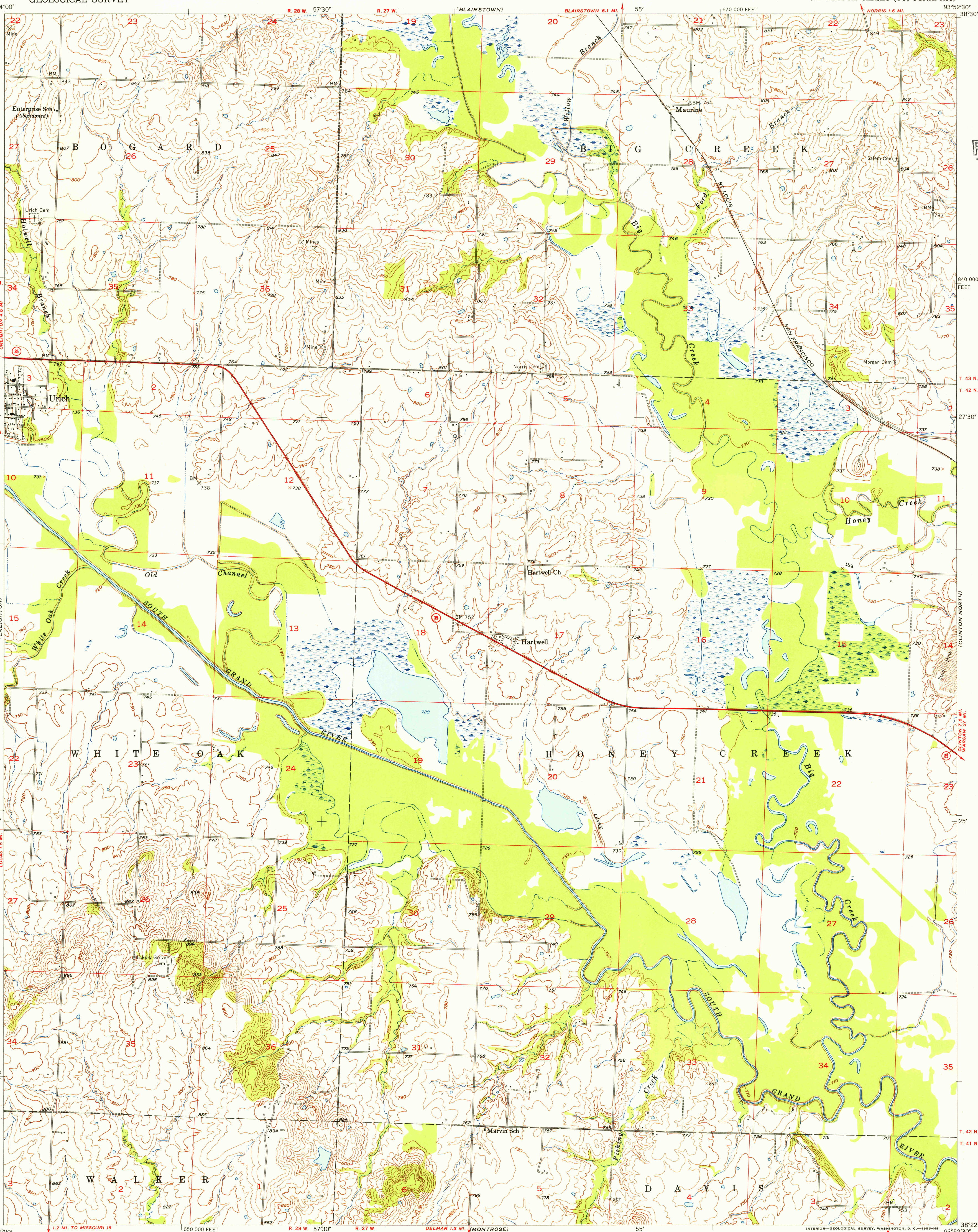


U.S.G.S.  
FILE COPY  
TOPOGRAPHIC DIVISION

U.S.G.S.  
FILE COPY  
TOPOGRAPHIC DIVISION



Mapped, edited, and published by the Geological Survey as part of the Department of the Interior program for the development of the Missouri River Basin.

Control by USGS and USC&GS

Topography from aerial photographs by photogrammetric methods

Aerial photographs taken 1950. Field check 1953

Polycyclic projection. 1927 North American datum

10,000-foot grid based on Missouri coordinate system, west zone

TRUE NORTH  
MAGNETIC NORTH  
APPROXIMATE MEAN DECLINATION, 1953

SCALE 1:24000

1 0 1000 2000 3000 4000 5000 6000 7000 FEET

1 0 5 10 KILOMETER

CONTOUR INTERVAL 10 FEET  
DATUM IS MEAN SEA LEVEL

THIS MAP COMPLIES WITH NATIONAL MAP ACCURACY STANDARDS  
FOR SALE BY U. S. GEOLOGICAL SURVEY, FEDERAL CENTER, DENVER, COLORADO OR WASHINGTON 25, D. C.  
AND BY THE MISSOURI GEOLOGICAL SURVEY, ROLLA, MISSOURI  
A FOLDER DESCRIBING TOPOGRAPHIC MAPS AND SYMBOLS IS AVAILABLE ON REQUEST

USGS  
Historical File  
Topographic Division

MISSOURI  
QUADRANGLE LOCATION

ROAD CLASSIFICATION

Heavy-duty 4 LANE 6 LANE Light-duty 2 LANE 4 LANE

Medium-duty 2 LANE 4 LANE Unimproved dirt

U.S. Route State Route

HARTWELL, MO.  
N3822.5-W9352.5/7.5

RETURN TO:  
USGS AND HISTORICAL MAP ARCHIVES

1953