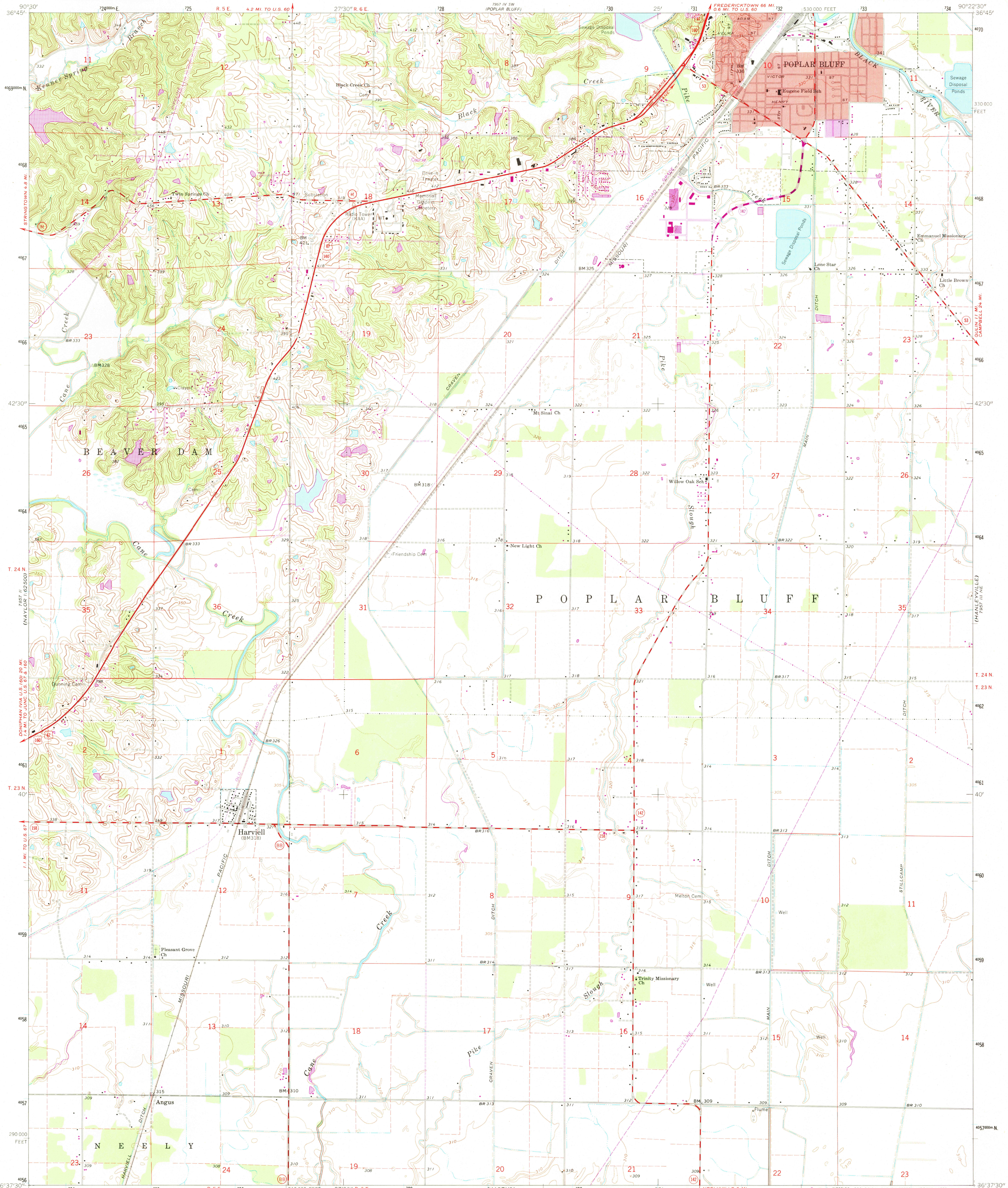


UNITED STATES  
DEPARTMENT OF THE INTERIOR  
GEOLOGICAL SURVEY

HARVIELL QUADRANGLE  
MISSOURI—BUTLER CO.  
7.5 MINUTE SERIES (TOPOGRAPHIC)  
NW/4 HARVIELL 15' QUADRANGLE



Mapped, edited, and published by the Geological Survey

Control by USGS, USC&GS, and USCE

Topography by photogrammetric methods from aerial photographs taken 1963 and planimetric surveys 1964

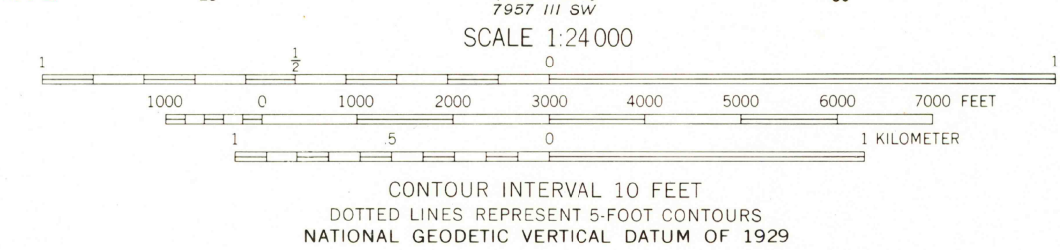
Polyconic projection. 1927 North American datum  
10,000-foot grid based on Missouri coordinate system, east zone  
1000-meter Universal Transverse Mercator grid ticks,  
zone 15, shown in blue

Red tint indicates areas in which only landmark buildings are shown  
Fine red dashed lines indicate selected fence and field lines where  
generally visible on aerial photographs. This information is unchecked

Revisions shown in purple and woodland compiled from  
aerial photographs taken 1976 and other source data  
This information not field checked. Map edited 1979  
Purple tint indicates extension of urban areas

To place on the predicted North American Datum 1983  
move the projection lines 4 meters south and  
9 meters east as shown by dashed corner ticks

UTM GRID AND 1979 MAGNETIC NORTH  
DECLINATION AT CENTER OF SHEET



THIS MAP COMPLIES WITH NATIONAL MAP ACCURACY STANDARDS  
FOR SALE BY U.S. GEOLOGICAL SURVEY, DENVER, COLORADO 80225, OR RESTON, VIRGINIA 22092  
MISSOURI DEPARTMENT OF NATURAL RESOURCES, ROLLA, MISSOURI 65401  
A FOLDER DESCRIBING TOPOGRAPHIC MAPS AND SYMBOLS IS AVAILABLE ON REQUEST

ROAD CLASSIFICATION  
Heavy-duty ——— Light-duty ———  
Medium-duty ——— Unimproved dirt ———  
U.S. Route ——— State Route ———



OCT 18 1979

HARVIELL, MO.  
NW/4 HARVIELL 15' QUADRANGLE  
N3637.5—W9022.5/7.5

1964  
PHOTOREVISED 1979  
AMS 7957 III NW—SERIES V879

RETURN TO:  
USGS AND HISTORICAL MAP ARCHIVES