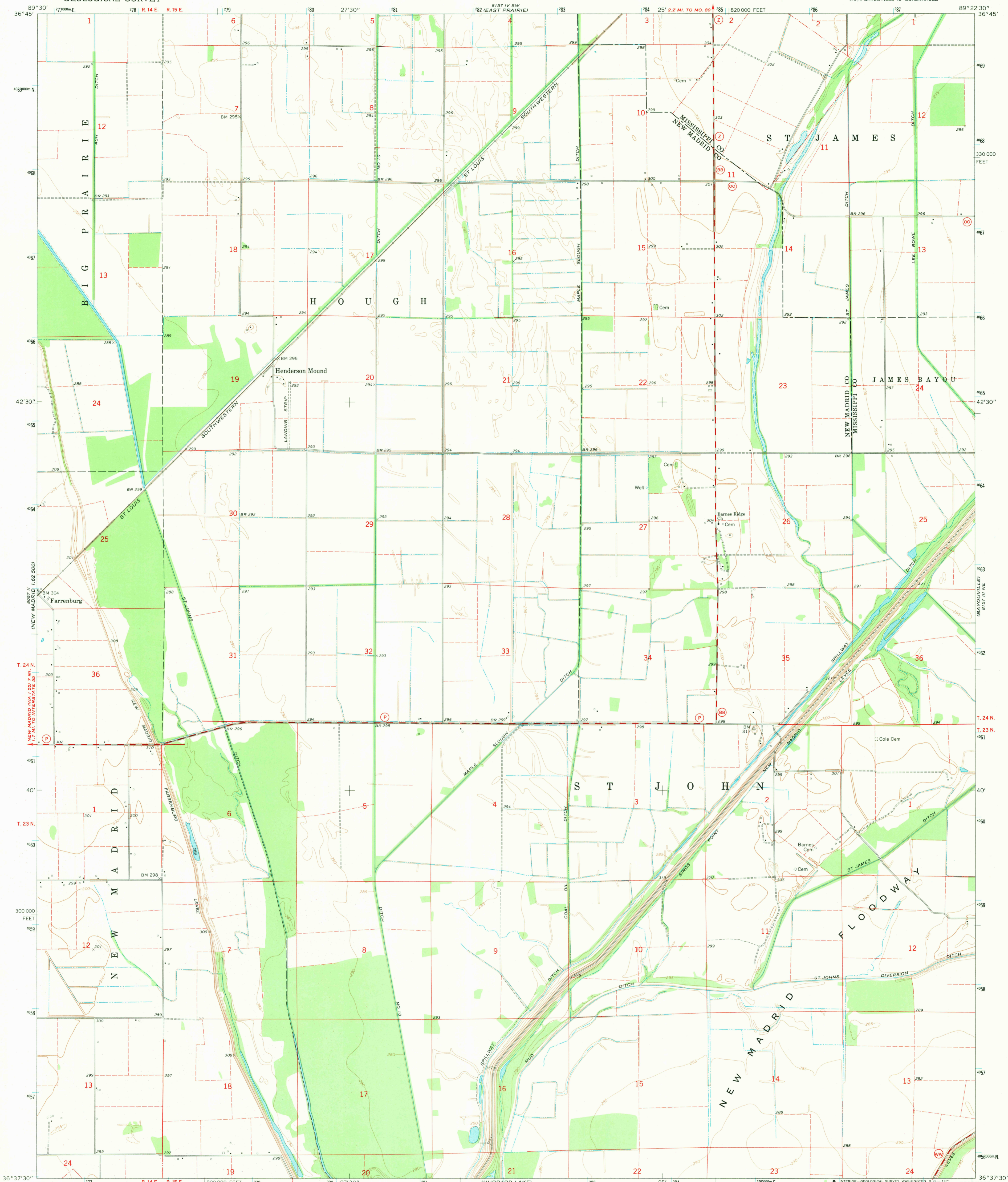


UNITED STATES
DEPARTMENT OF THE INTERIOR
GEOLOGICAL SURVEY

HENDERSON MOUND QUADRANGLE
MISSOURI
7.5 MINUTE SERIES (TOPOGRAPHIC)
NW/4 BAYOUVILLE 15' QUADRANGLE



Mapped, edited, and published by the Geological Survey
Control by USGS and USC&GS
Planimetry by photogrammetric methods from aerial photographs
taken 1967. Topography by planetable surveys 1969
Polyconic projection. 1927 North American datum
10,000-foot grid based on Missouri coordinate system, east zone
1000-meter Universal Transverse Mercator grid ticks,
zone 16, shown in blue
Fine red dashed lines indicate selected fence and field lines where
generally visible on aerial photographs. This information is unchecked

UTM GRID AND 1969 MAGNETIC NORTH
DECLINATION AT CENTER OF SHEET

SCALE 1:24,000
CONTOUR INTERVAL 5 FEET
DATUM IS MEAN SEA LEVEL

THIS MAP COMPLIES WITH NATIONAL MAP ACCURACY STANDARDS
FOR SALE BY U.S. GEOLOGICAL SURVEY, DENVER, COLORADO 80225, OR WASHINGTON, D.C. 20242
AND BY THE MISSOURI GEOLOGICAL SURVEY, ROLLA, MISSOURI 65401
A FOLDER DESCRIBING TOPOGRAPHIC MAPS AND SYMBOLS IS AVAILABLE ON REQUEST

USGS
Historical File
Topographic Division



U.S.G.S.
FILE COPY
TOPOGRAPHIC DIVISION

ROAD CLASSIFICATION
Secondary highway, all weather, Light-duty road, all weather,
hard surface ———— improved surface
Unimproved road, fair or dry
weather ————
○ State Route

HENDERSON MOUND, MO.
NW/4 BAYOUVILLE 15' QUADRANGLE
N3637.5 — W8922.5/7.5
1969
AMS 8157 III NW—SERIES V879

2830
JUN 15 1971