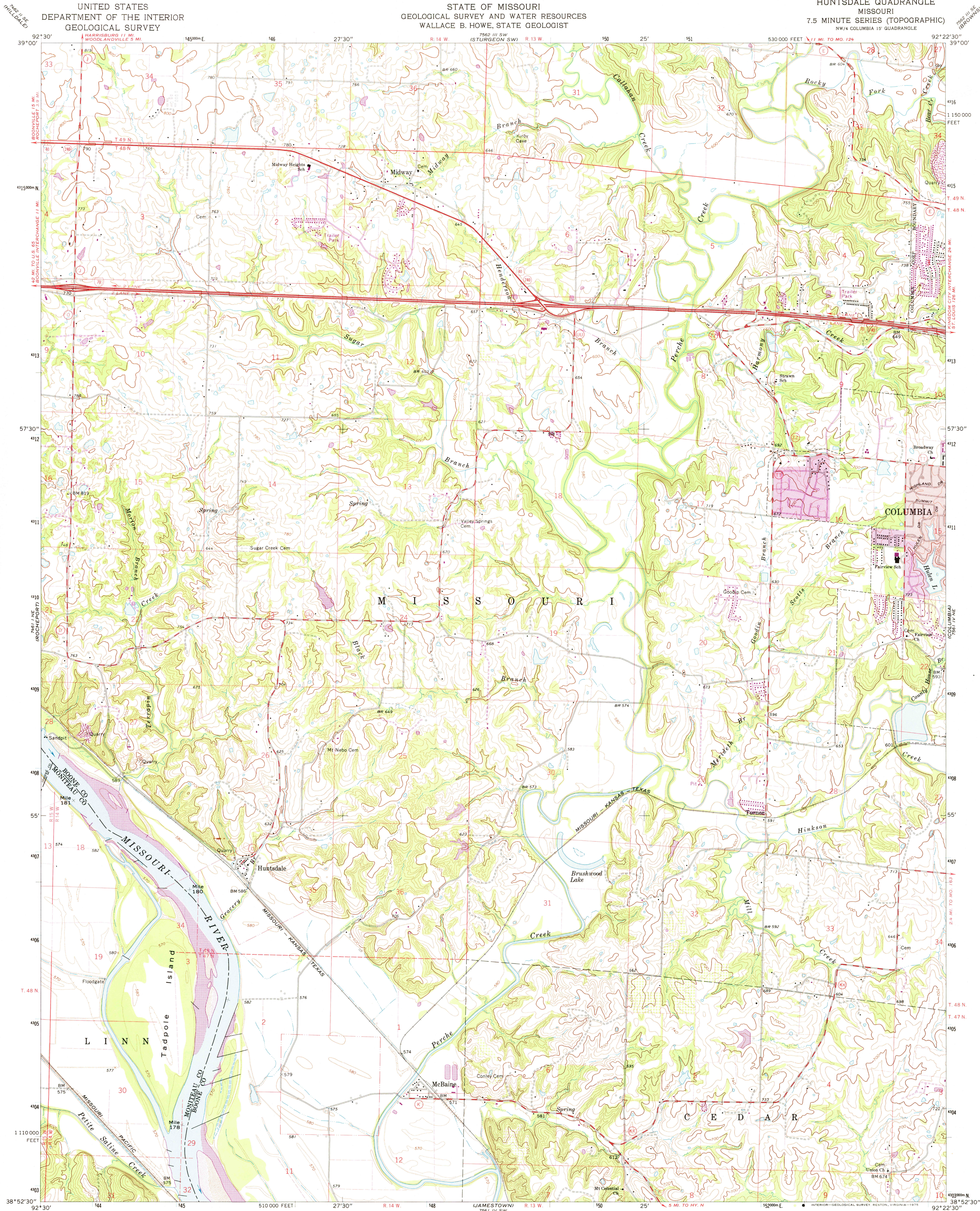


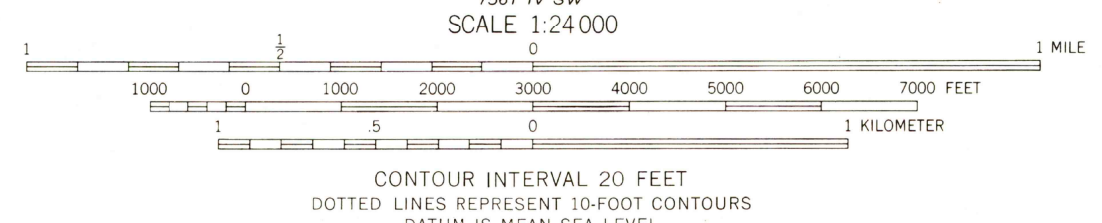
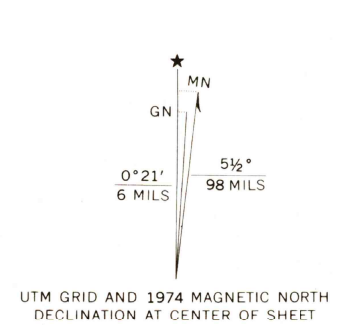
UNITED STATES  
DEPARTMENT OF THE INTERIOR  
GEOLOGICAL SURVEY

STATE OF MISSOURI  
GEOLOGICAL SURVEY AND WATER RESOURCES  
WALLACE B. HOWE, STATE GEOLOGIST

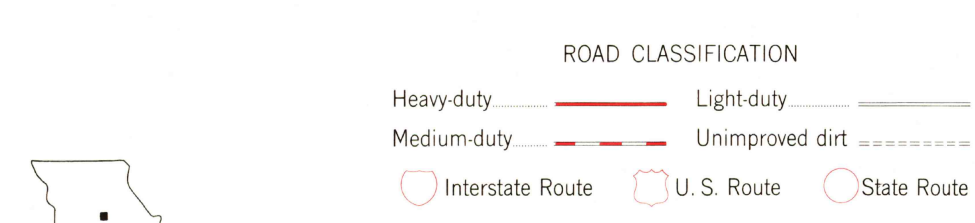
HUNTSDALE QUADRANGLE  
MISSOURI  
7.5 MINUTE SERIES (TOPOGRAPHIC)  
NW/4 COLUMBIA 15' QUADRANGLE



Mapped, edited, and published by the Geological Survey  
Control by USGS and USC&GS  
Topography by photogrammetric methods from aerial  
photographs taken 1965 and planetable surveys 1967  
Polyconic projection. 1927 North American datum  
10,000-foot grid based on Missouri coordinate system, central zone  
1000-meter Universal Transverse Mercator grid ticks,  
zone 15, shown in blue  
Red tint indicates area in which only landmark buildings are shown  
Fine red dashed lines indicate selected fence and field lines where  
generally visible on aerial photographs. This information is unchecked  
Revisions shown in purple compiled from aerial photographs  
taken 1974. This information not field checked  
Purple tint indicates extension of urban areas



THIS MAP COMPLIES WITH NATIONAL MAP ACCURACY STANDARDS  
FOR SALE BY U. S. GEOLOGICAL SURVEY, DENVER, COLORADO 80225, OR RESTON, VIRGINIA 22092  
AND BY THE MISSOURI GEOLOGICAL SURVEY, ROLLA, MISSOURI 65401  
A FOLDER DESCRIBING TOPOGRAPHIC MAPS AND SYMBOLS IS AVAILABLE ON REQUEST



USGS  
Historical File  
Topographic Division

HUNTSDALE, MO.  
NW/4 COLUMBIA 15' QUADRANGLE  
N3852.5-W9222.5/7.5

1967  
PHOTOREVISED 1974  
AMS 7561 IV NW-SERIES V879

MAR 20 1975

3710