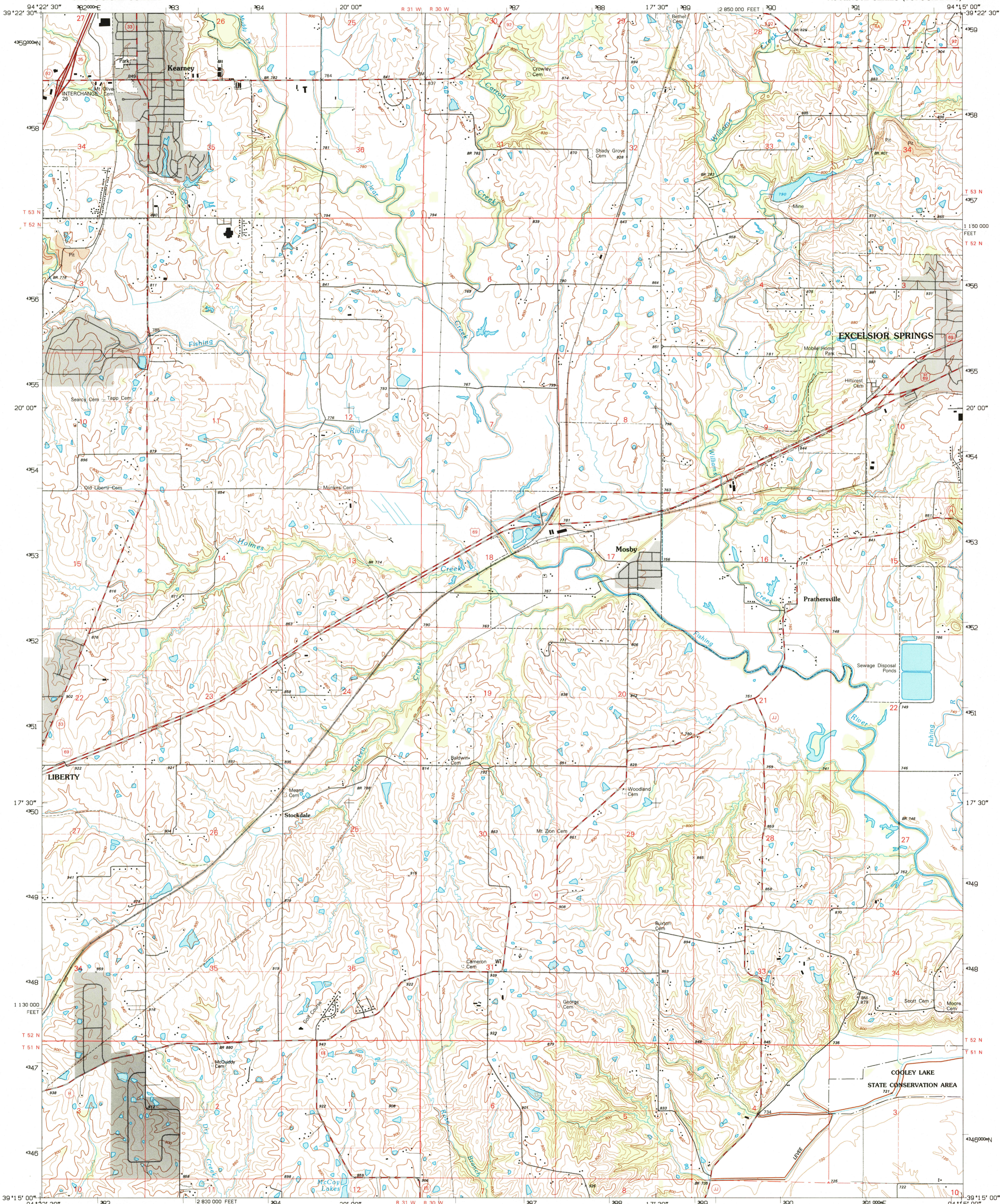
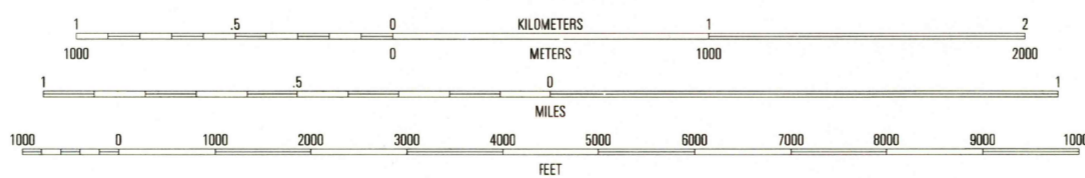
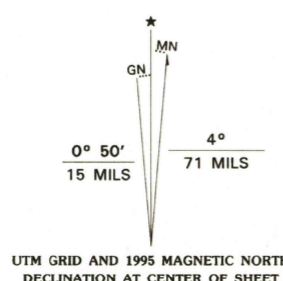


UNITED STATES  
DEPARTMENT OF THE INTERIOR  
GEOLOGICAL SURVEY

KEARNEY QUADRANGLE  
MISSOURI-CLAY CO.  
7.5-MINUTE SERIES (TOPOGRAPHIC)



Produced by the United States Geological Survey  
Compiled by photogrammetric methods from imagery dated 1970  
Field checked 1971. Revised from imagery dated 1990  
PLSS and survey control current as of 1971. Map edited 1995  
Contours not revised  
North American Datum of 1983 (NAD 83). Projection and  
blue 1000-meter ticks: Universal Transverse Mercator, zone 15  
10 000-foot ticks: Missouri Coordinate System of 1983 (west zone)  
North American Datum of 1927 (NAD 27) is shown by dashed  
corner ticks. The values of the shift between NAD 83 and NAD 27  
for 7.5-minute intersections are obtainable from National Geodetic  
Survey NADCON software  
There may be private inholdings within the boundaries of  
the National or State reservations shown on this map



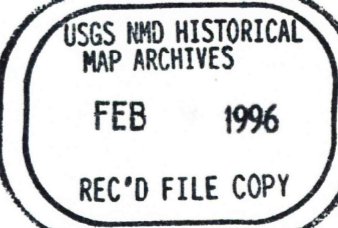
THIS MAP COMPLIES WITH NATIONAL MAP ACCURACY STANDARDS  
FOR SALE BY U.S. GEOLOGICAL SURVEY, DENVER, COLORADO 80225, OR RESTON, VIRGINIA 22092  
AND DIVISION OF GEOLOGY AND LAND SURVEY  
MISSOURI DEPARTMENT OF NATURAL RESOURCES, ROLLA, MISSOURI 65401  
A FOLDER DESCRIBING TOPOGRAPHIC MAPS AND SYMBOLS IS AVAILABLE ON REQUEST



QUADRANGLE LOCATION

1	2	3
4	5	6
7	8	9

1 Arley  
2 Holt  
3 Lawson  
4 Kearney SW  
5 Excelsior Springs  
6 Liberty  
7 Missouri City  
8 Buckner



KEARNEY, MO  
39094-C3-TF-024  
1990

DMA 7162 IV SE-SERIES V879

