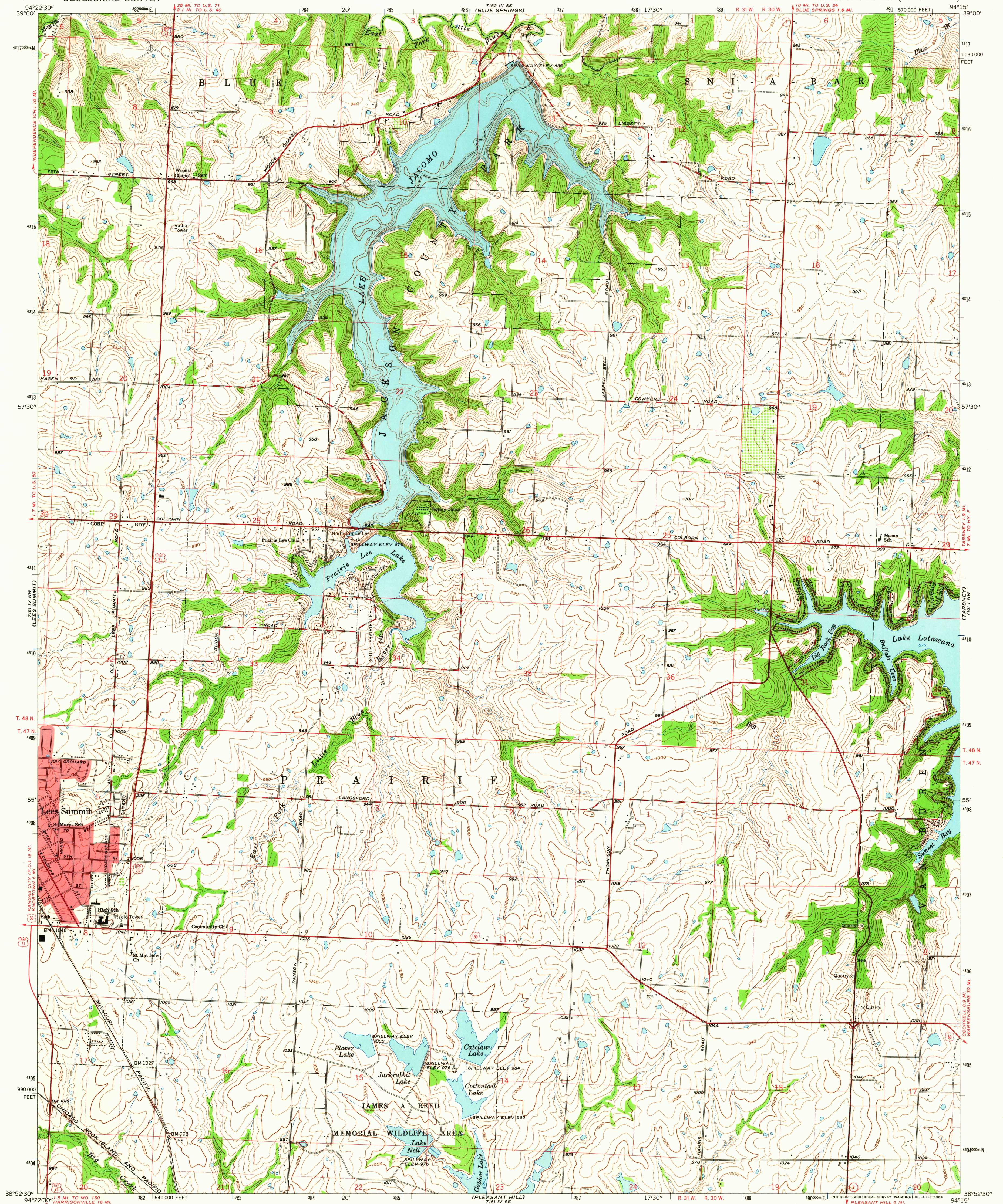


UNITED STATES
DEPARTMENT OF THE INTERIOR
GEOLOGICAL SURVEY

LAKE JACOMO QUADRANGLE
MISSOURI—JACKSON CO.
7.5 MINUTE SERIES (TOPOGRAPHIC)



Maped, edited, and published by the Geological Survey
in cooperation with State of Missouri, Geological Survey
and Water Resources

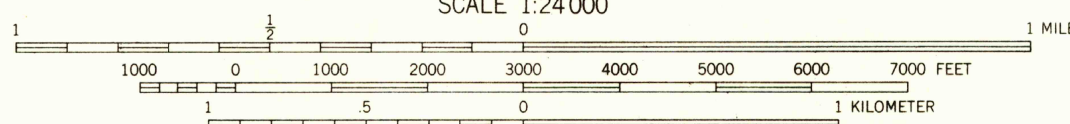
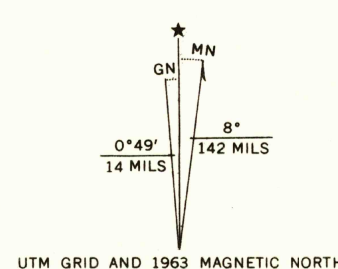
Control by USGS and USC&GS

Planimetry by photogrammetric methods from aerial photographs
taken 1955. Topography by planetable surveys 1934. Revised 1963

Polyconic projection. 1927 North American datum
10,000-foot grid based on Missouri coordinate system, west zone
1000-meter Universal Transverse Mercator grid ticks,
zone 15, shown in blue

Red tint indicates area in which only landmark buildings are shown

Fine red dashed lines indicate selected fence and field lines where
generally visible on aerial photographs. This information is unchecked



CONTOUR INTERVAL 10 FEET
DATUM IS MEAN SEA LEVEL

THIS MAP COMPLIES WITH NATIONAL MAP ACCURACY STANDARDS
FOR SALE BY U.S. GEOLOGICAL SURVEY, DENVER 25, COLORADO OR WASHINGTON 25, D. C.
AND BY THE MISSOURI GEOLOGICAL SURVEY, ROLLA, MISSOURI
A FOLDER DESCRIBING TOPOGRAPHIC MAPS AND SYMBOLS IS AVAILABLE ON REQUEST



USGS
Historical File
Topographic Division

ROAD CLASSIFICATION
Heavy-duty —————
Medium-duty —————
Light-duty —————
Unimproved dirt —————
U. S. Route ————
State Route ————

LAKE JACOMO, MO.
N3852.5—W9415.7.5

1963

AMS 7161 IV NE—SERIES V879

3060