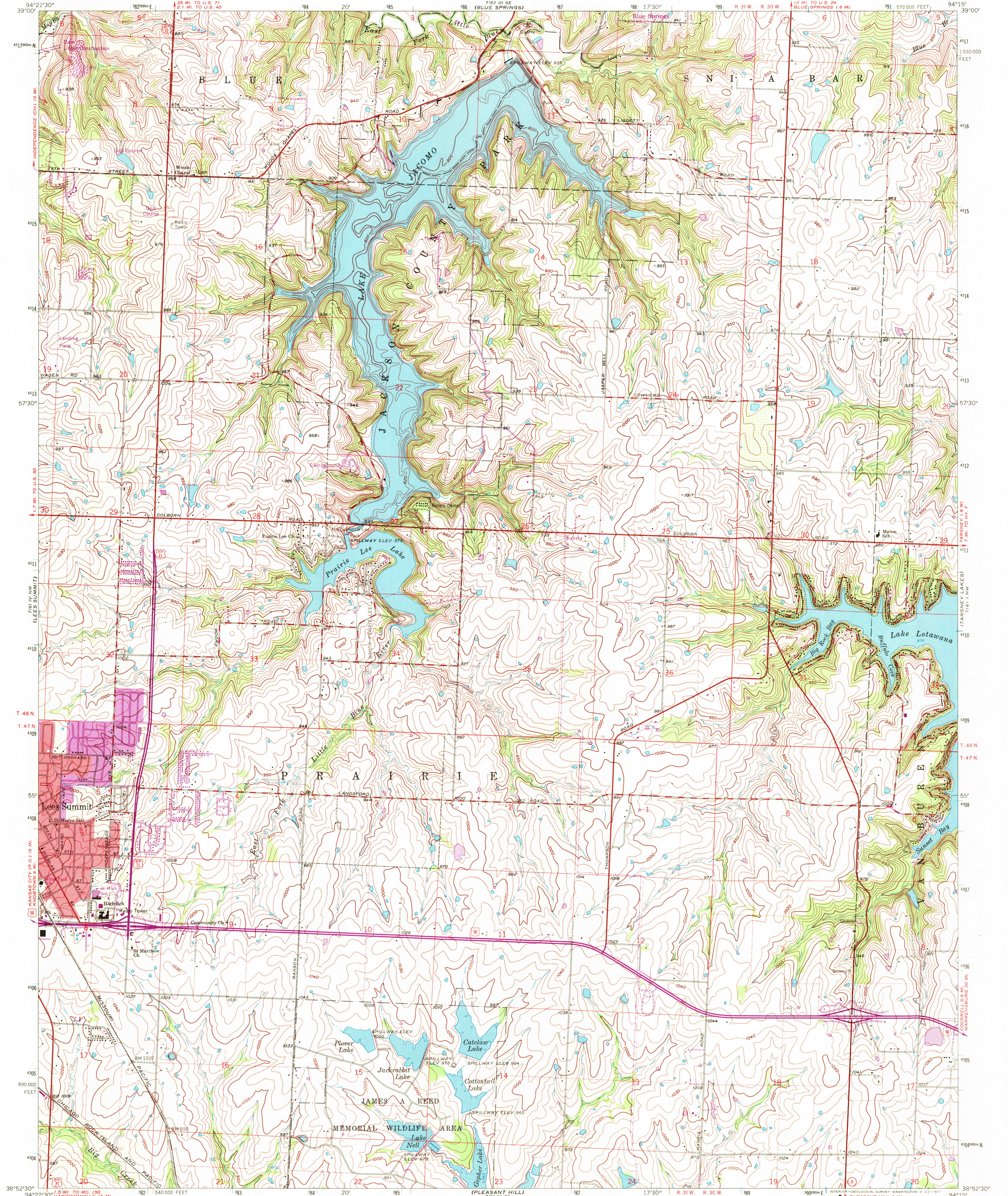


UNITED STATES  
DEPARTMENT OF THE INTERIOR  
GEOLOGICAL SURVEY

LAKE JACOMO QUADRANGLE  
MISSOURI-JACKSON CO.  
7.5 MINUTE SERIES (TOPOGRAPHIC)



Maped, edited, and published by the Geological Survey  
in cooperation with State of Missouri, Geological Survey  
and Water Resources

Control by USGS and USC&GS

Planimetry by photogrammetric methods from aerial photographs  
taken 1955. Topography by planetable surveys 1934. Revised 1963

Polyconic projection. 1927 North American datum

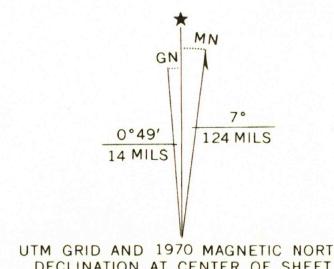
10,000-foot grid based on Missouri coordinate system, west zone

1000-meter Universal Transverse Mercator grid ticks,

zone 15, shown in blue

Red tint indicates area in which only landmark buildings are shown

Fine red dashed lines indicate selected fence and field lines where  
generally visible on aerial photographs. This information is unchecked



SCALE 1:24,000  
CONTOUR INTERVAL 10 FEET  
DATUM IS MEAN SEA LEVEL



ROAD CLASSIFICATION  
Heavy-duty ——— Light-duty ———  
Medium-duty ——— Unimproved dirt ———  
U.S. Route ——— State Route ———

LAKE JACOMO, MO.  
N3852.5—W9415.7.5

NOV 2 1971

1963  
PHOTO-REVISED 1970  
AMS 7161 IV NE—SERIES V879

THIS MAP COMPLIES WITH NATIONAL MAP ACCURACY STANDARDS  
FOR SALE BY U.S. GEOLOGICAL SURVEY, DENVER, COLORADO 80225, OR WASHINGTON, D.C. 20242  
AND BY THE MISSOURI GEOLOGICAL SURVEY, ROLLA, MISSOURI 65401  
A FOLDER DESCRIBING TOPOGRAPHIC MAPS AND SYMBOLS IS AVAILABLE ON REQUEST

Revisions shown in purple compiled from aerial photographs  
taken 1970. This information not field checked  
Purple tint indicates extension of urban area