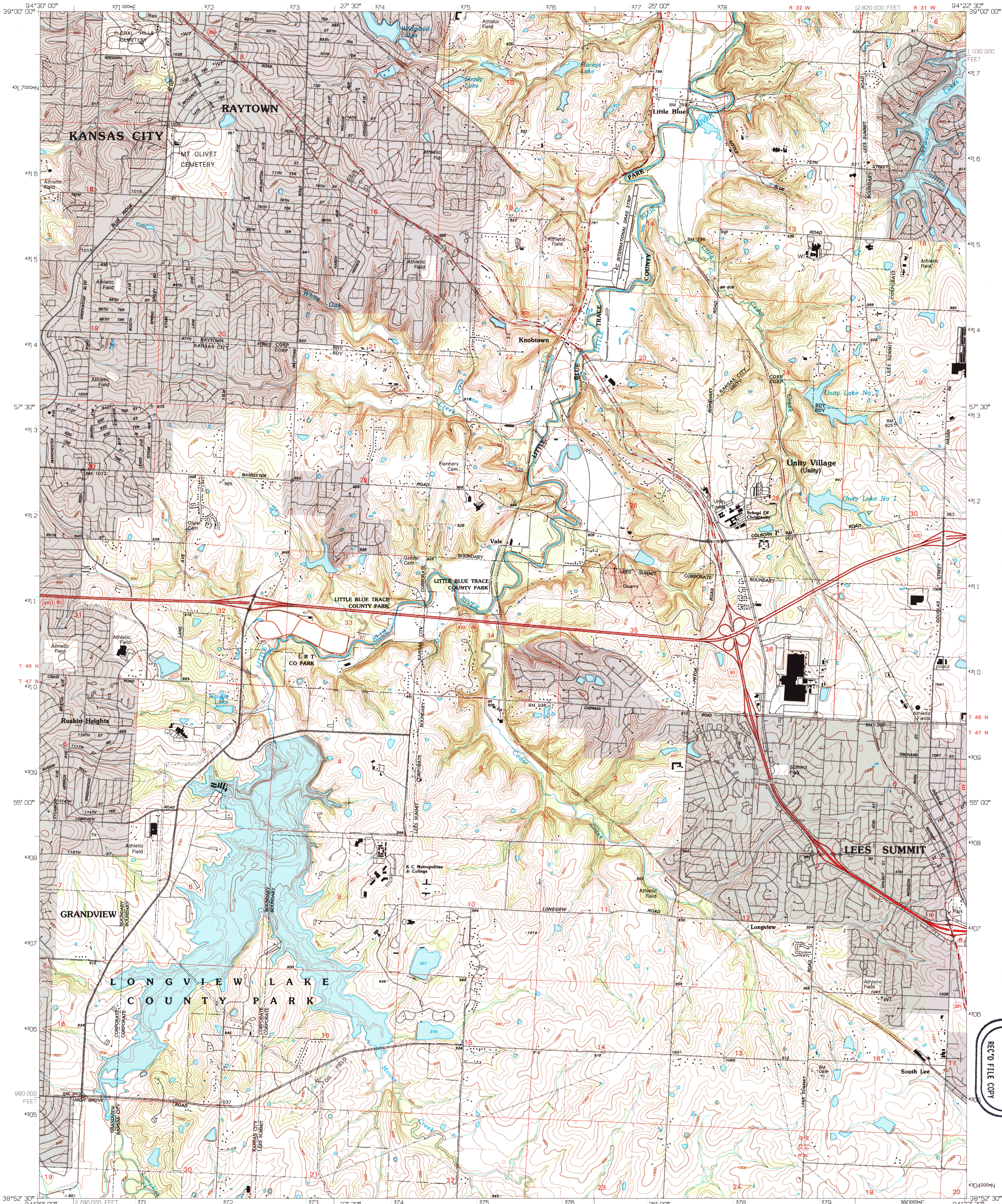
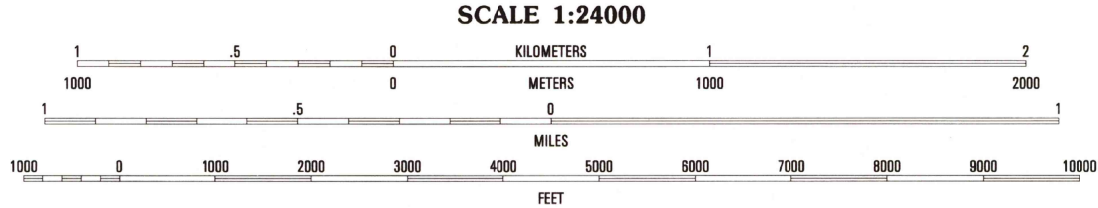
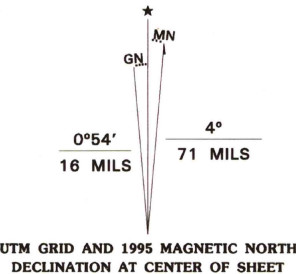


UNITED STATES
DEPARTMENT OF THE INTERIOR
GEOLOGICAL SURVEY

LEES SUMMIT QUADRANGLE
MISSOURI-JACKSON CO.
7.5 MINUTE SERIES (TOPOGRAPHIC)



Produced by the United States Geological Survey
Compiled by photogrammetric methods from imagery dated 1955
Revised from imagery dated 1962. Field checked 1964
Revised from imagery dated 1990. PLS and survey control
current as of 1964. Map edited 1995. Contours not revised
Contours that conflict with revised planimetry are dashed
North American Datum of 1983 (NAD 83). Projection and
blue 1000-foot ticks: Universal Transverse Mercator, zone 15
North American Datum of 1927 (NAD 27) is shown by dashed
corner ticks. The values of the shift between NAD 83 and NAD 27
for 7.5-minute intersections are obtainable from National Geodetic
Survey NADCON software



CONTOUR INTERVAL 10 FEET
NATIONAL GEODETIC VERTICAL DATUM OF 1929

FOR SALE BY U.S. GEOLOGICAL SURVEY, DENVER, COLORADO 80225, OR RESTON, VIRGINIA 22092
AND DIVISION OF GEOLOGY AND LAND SURVEY
MISSOURI DEPARTMENT OF NATURAL RESOURCES, ROLLA, MISSOURI 65401
A FOLDER DESCRIBING TOPOGRAPHIC MAPS AND SYMBOLS IS AVAILABLE ON REQUEST



QUADRANGLE LOCATION

1	2	3
4	5	6
7	8	9

ADJOINING 7.5' QUADRANGLE NAMES

ROAD CLASSIFICATION
Primary highway
hard surface
Secondary highway
hard surface
Light-duty road, hard or
improved surface
Unimproved road

LEES SUMMIT, MO
38094-H4-TF-024
1990
DMA 7161 IV NW-SERIES V879

USGS AND HISTORICAL
MAP ARCHIVES
SEP 07 1995
REC'D FILE COPY

