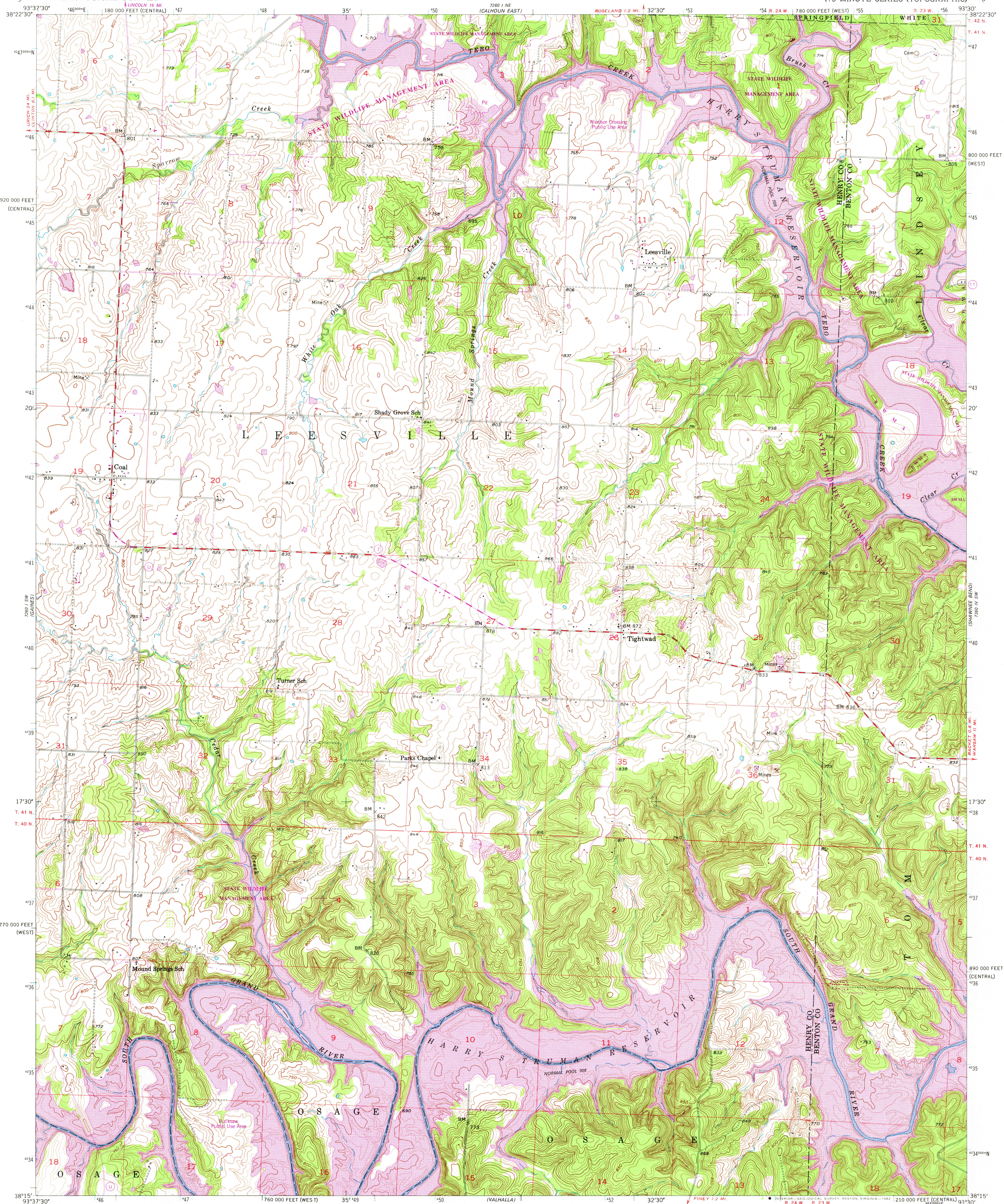


UNITED STATES  
DEPARTMENT OF THE INTERIOR  
GEOLOGICAL SURVEY

LEESVILLE QUADRANGLE  
MISSOURI  
7.5 MINUTE SERIES (TOPOGRAPHIC)



Mapped, edited, and published by the Geological Survey  
as part of the Department of the Interior program  
for the development of the Missouri River Basin

Control by USGS and USC&GS

Topography from aerial photographs by multiplex methods

Aerial photographs taken 1950. Field check 1952-1953

Polyconic projection. 1927 North American datum

10,000-foot grids based on Missouri coordinate system,

west and central zones

1000-meter Universal Transverse Mercator grid ticks,

zone 15, shown in blue

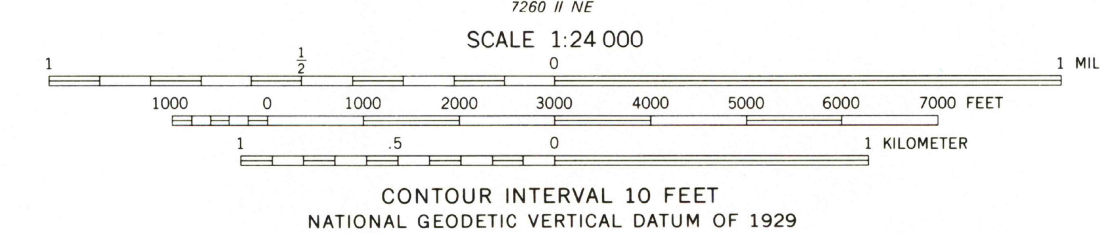
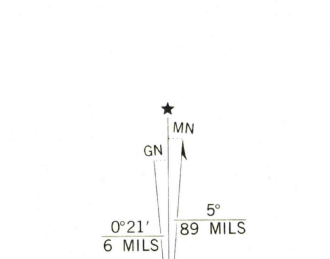
To place on the predicted North American Datum 1983

move the projection lines 17 meters east as shown by

dashed corner ticks

There may be private inholdings within the boundaries of

the National or State reservations shown on this map



THIS MAP COMPLIES WITH NATIONAL MAP ACCURACY STANDARDS  
FOR SALE BY U. S. GEOLOGICAL SURVEY, DENVER, COLORADO 80225, OR RESTON, VIRGINIA 22092,  
AND THE DIVISION OF GEOLOGY AND LAND SURVEY  
MISSOURI DEPARTMENT OF NATURAL RESOURCES, ROLLA, MISSOURI 65401  
A FOLDER DESCRIBING TOPOGRAPHIC MAPS AND SYMBOLS IS AVAILABLE ON REQUEST



RETURN TO:  
USGS AND HISTORICAL MAP ARCHIVES

Revisions shown in purple compiled from aerial  
photographs taken 1980. Map edited 1981  
This information not field checked

LEESVILLE, MO.  
N3815-W9330/7.5

1953  
PHOTOREVISED 1981  
DMA 7260 I SE-SERIES V879

APR 21 1982