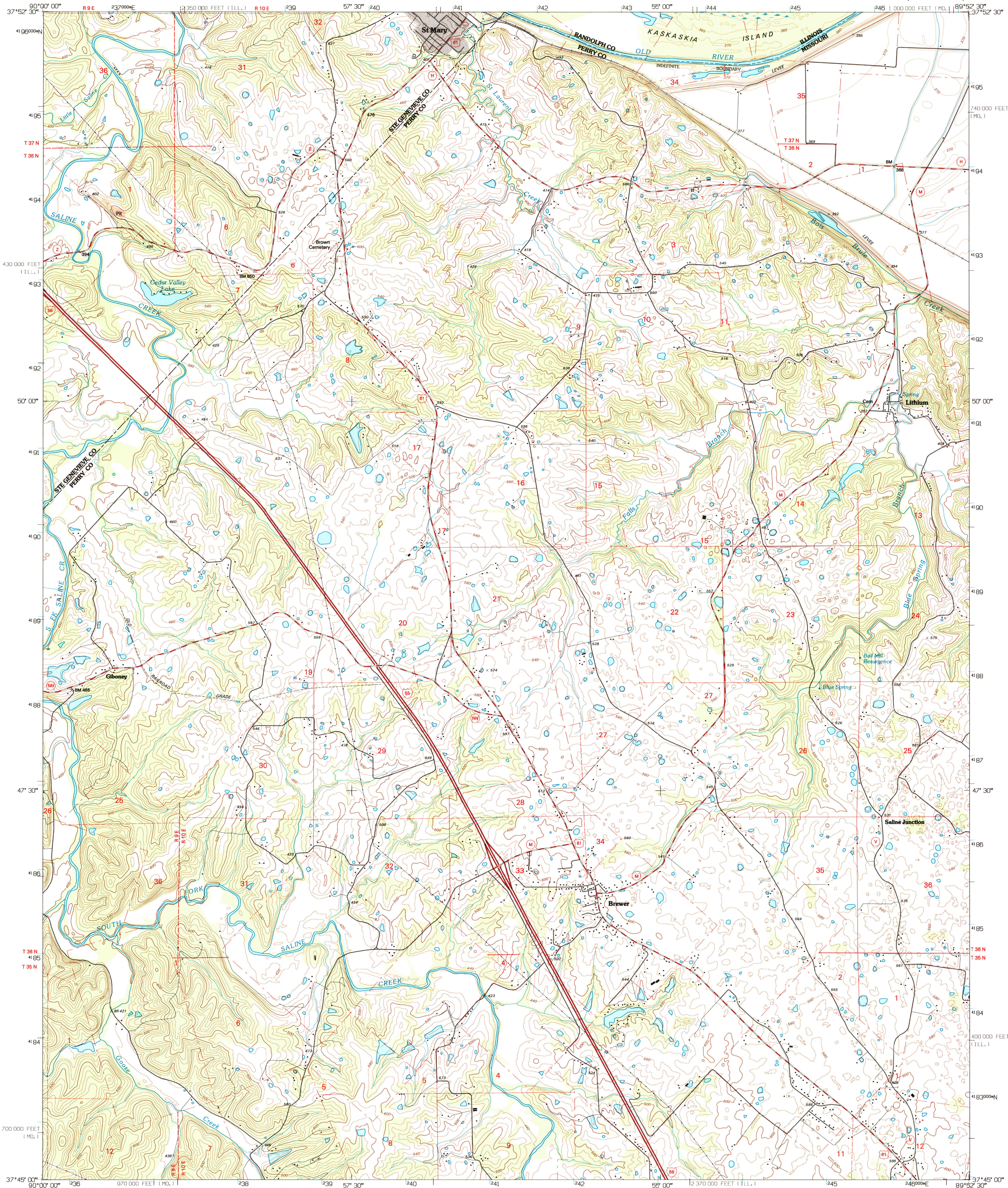


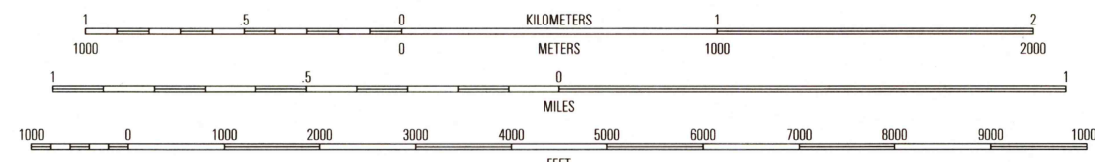
UNITED STATES
DEPARTMENT OF THE INTERIOR
GEOLOGICAL SURVEY

LITHIUM QUADRANGLE
MISSOURI-ILLINOIS
7.5-MINUTE SERIES (TOPOGRAPHIC)



Produced by the United States Geological Survey
Compiled from imagery dated 1968. Revised from imagery
dated 1993. PLSS and survey control current as of 1970.
Contours and elevations current as of 1968. Map edited 1996.
North American Datum of 1983 (NAD 83). Projection and
blue 1000-meter ticks: Universal Transverse Mercator, zone 16
10 000-foot ticks: Missouri (east zone) and Illinois (west zone)
Coordinate Systems of 1983
North American Datum of 1927 (NAD 27) is shown by dashed
corner ticks. The values of the shift between NAD 83 and NAD 27
for 7.5-minute intersections are obtainable from National Geodetic
Survey NADCON software

UTM GRID AND 1996 MAGNETIC NORTH
DECLINATION AT CENTER OF SHEET



CONTOUR INTERVAL 20 FEET
SUPPLEMENTARY CONTOUR INTERVAL 5 FEET
NATIONAL GEODETIC VERTICAL DATUM OF 1929

THIS MAP COMPLEYS WITH NATIONAL MAP ACCURACY STANDARDS
FOR SALE BY U.S. GEOLOGICAL SURVEY, DENVER, COLORADO 80225, OR RESTON, VIRGINIA 22092
AND DIVISION OF GEOLOGY AND LAND SURVEY
MISSOURI DEPARTMENT OF NATURAL RESOURCES, ROLLA, MISSOURI 65401
AND ILLINOIS GEOLOGICAL SURVEY, CHAMPAIGN, ILLINOIS 61820
A FOLDER DESCRIBING TOPOGRAPHIC MAPS AND SYMBOLS IS AVAILABLE ON REQUEST



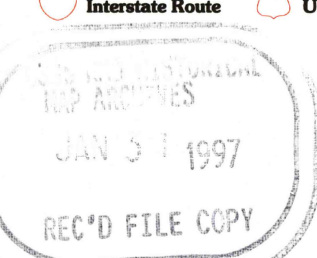
QUADRANGLE LOCATION

| | | | |
|---|---|---|-------------------|
| 1 | 2 | 3 | 1 Site Genevieve |
| 4 | 5 | 6 | 2 Kaskaskia |
| 7 | 8 | 9 | 3 Chester |
| | | | 4 Mound |
| | | | 5 Bellevue |
| | | | 6 Parker Lake |
| | | | 7 Perryville West |
| | | | 8 Perryville East |

ADJOINING 7.5' QUADRANGLE NAMES

ROAD CLASSIFICATION

Primary highway
hard surface
Secondary highway
hard surface
Light-duty road, hard or
improved surface
Unimproved road



LITHIUM, MO-IL
37089-G8-TF-024
1993

DMA 8059 IV SW-SERIES V879

