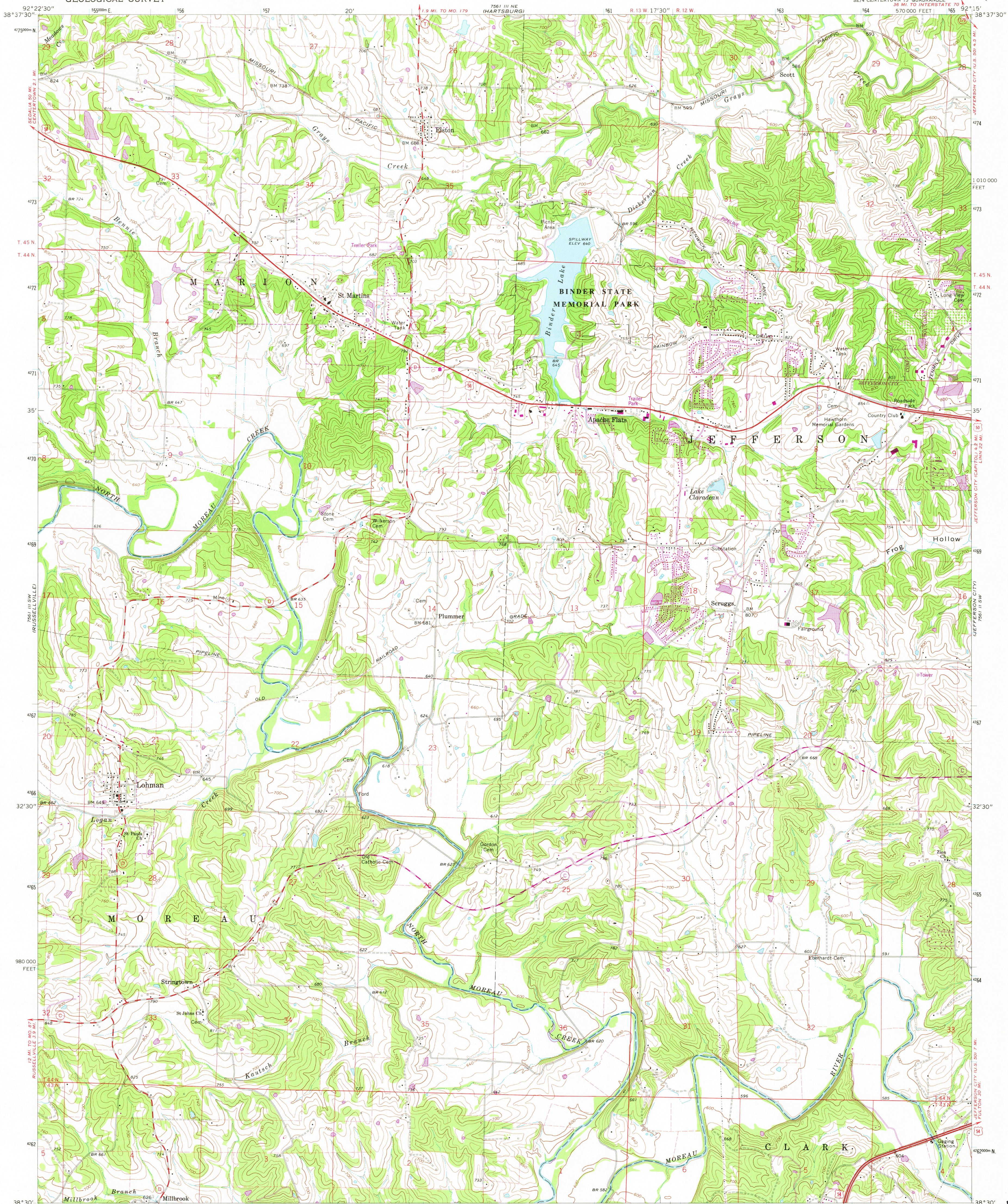


UNITED STATES
DEPARTMENT OF THE INTERIOR
GEOLOGICAL SURVEY

LOHMAN QUADRANGLE
MISSOURI—COLE CO.
7.5 MINUTE SERIES (TOPOGRAPHIC)



Mapped, edited, and published by the Geological Survey
Control by USGS and USC&GS

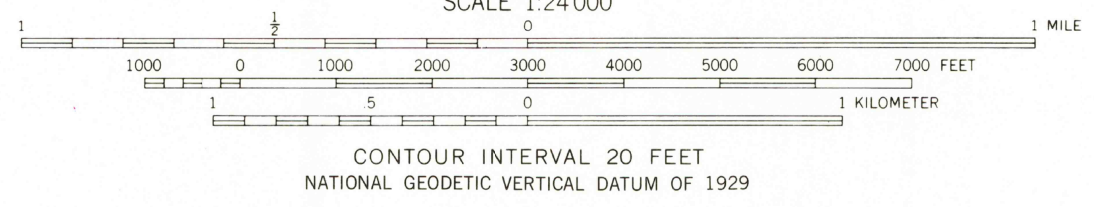
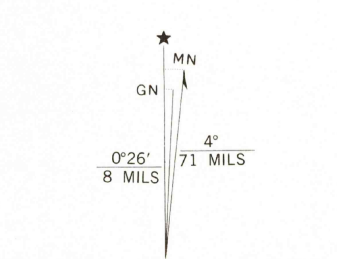
Topography by photogrammetric methods from aerial
photographs taken 1967. Field checked 1968

Polyconic projection. 1927 North American datum
10,000-foot grid based on Missouri coordinate system, central zone
1000-meter Universal Transverse Mercator grid ticks,
zone 15, shown in blue

Fine red dashed lines indicate selected fence and field lines where
generally visible on aerial photographs. This information is unchecked

To place on the predicted North American Datum 1983
move the projection lines 1 meter south and
14 meters east as shown by dashed corner ticks

There may be private inholdings within the boundaries of
the National or State reservations shown on this map



THIS MAP COMPLIES WITH NATIONAL MAP ACCURACY STANDARDS
FOR SALE BY U. S. GEOLOGICAL SURVEY, DENVER, COLORADO 80225, OR RESTON, VIRGINIA 22092,
AND THE DIVISION OF GEOLOGY AND LAND SURVEY
MISSOURI DEPARTMENT OF NATURAL RESOURCES, ROLLA, MISSOURI 65401
A FOLDER DESCRIBING TOPOGRAPHIC MAPS AND SYMBOLS IS AVAILABLE ON REQUEST



ROAD CLASSIFICATION
Primary highway, all weather, hard surface
Secondary highway, all weather, hard surface
Light duty road, all weather, improved surface
Unimproved road, fair or dry weather
U. S. Route
State Route

RETURN TO:
USGS AND HISTORICAL MAP ARCHIVES

LOHMAN, MO.
SE/4 CENTERTOWN 15' QUADRANGLE
N3830—W9215/7.5

1968
PHOTOREVISED 1981
DMA 7561 III SE—SERIES V879

FEB 8 1982

2086