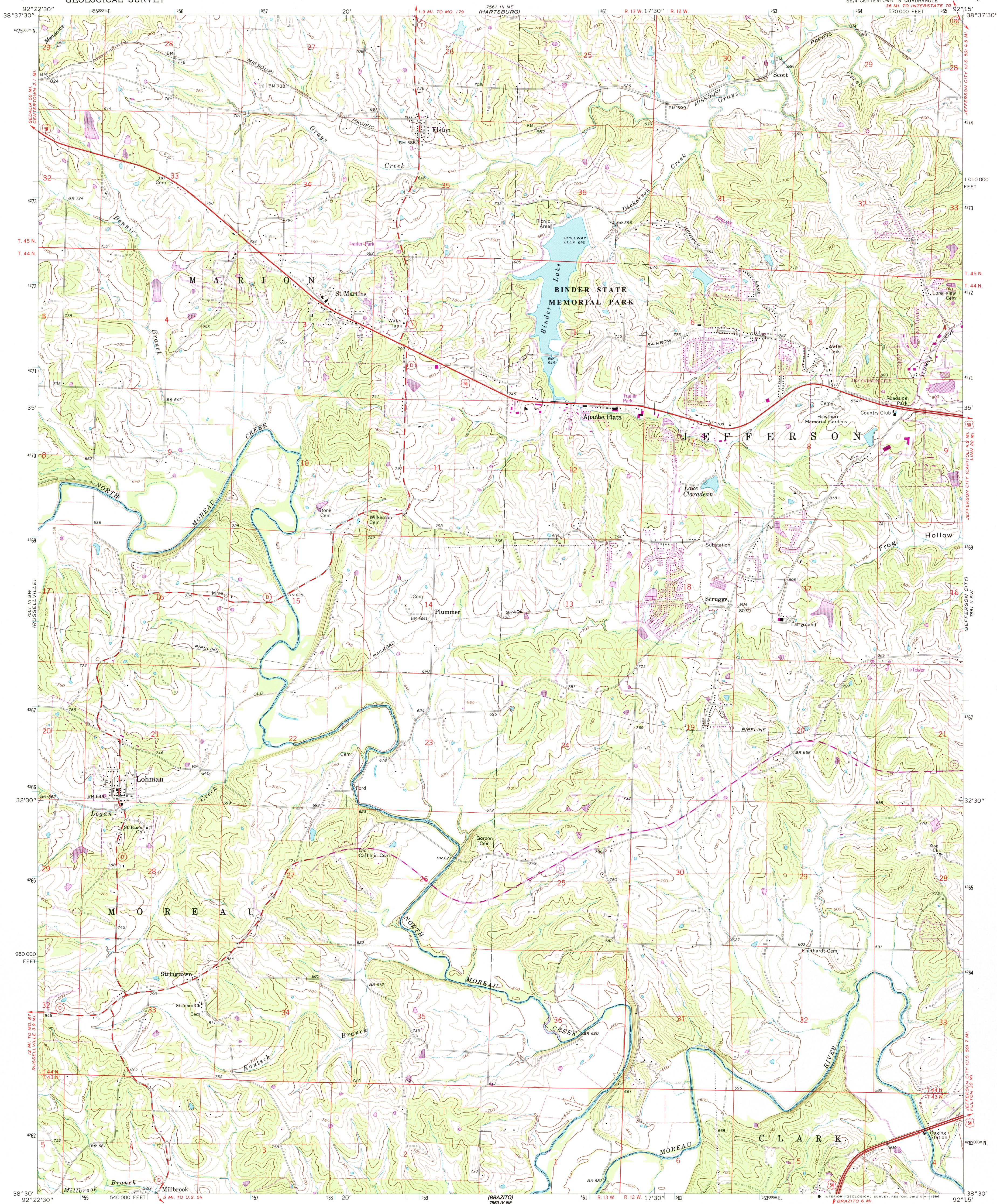
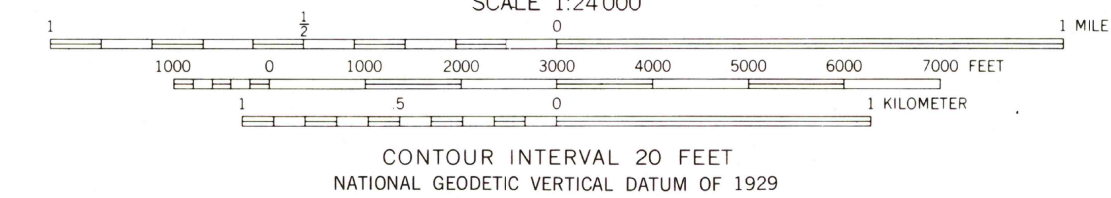
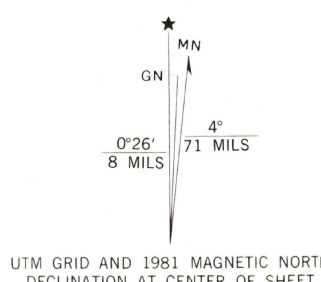


UNITED STATES
DEPARTMENT OF THE INTERIOR
GEOLOGICAL SURVEY

LOHMAN QUADRANGLE
MISSOURI—COLE CO.
7.5 MINUTE SERIES (TOPOGRAPHIC)



Mapped, edited, and published by the Geological Survey
Control by USGS and USCGS
Topography by photogrammetric methods from aerial
photographs taken 1967. Field checked 1968
Polyconic projection. 1927 North American datum
10,000-foot grid based on Missouri coordinate system, central zone
1000-meter Universal Transverse Mercator grid ticks,
zone 15, shown in blue
Fine red dashed lines indicate selected fence and field lines where
generally visible on aerial photographs. This information is unchecked
To place on the predicted North American Datum 1983
move the projection lines 1 meter south and
14 meters east as shown by dashed corner ticks
There may be private inholdings within the boundaries of
the National or State reservations shown on this map



THIS MAP COMPLIES WITH NATIONAL MAP ACCURACY STANDARDS
FOR SALE BY U. S. GEOLOGICAL SURVEY, DENVER, COLORADO 80225, OR RESTON, VIRGINIA 22092,
AND THE DIVISION OF GEOLOGY AND LAND SURVEY,
MISSOURI DEPARTMENT OF NATURAL RESOURCES, ROLLA, MISSOURI 65401
A FOLDER DESCRIBING TOPOGRAPHIC MAPS AND SYMBOLS IS AVAILABLE ON REQUEST



QUADRANGLE LOCATION
Revisions shown in purple compiled from aerial
photographs taken 1980. Map edited 1981
This information not field checked

Primary highway, all weather, Light-duty road, all weather,
hard surface, improved surface
Secondary highway, all weather, Unimproved road, fair or dry
hard surface, weather
U. S. Route State Route

LOHMAN, MO.
SE/4 CENTERTOWN 15' QUADRANGLE
38092-E3-TF-024

1968
PHOTOREVISED 1981
DMA 7561 III SE—SERIES V879

REPRODUCTION COPY

USGS (MID) HISTORICAL MAP