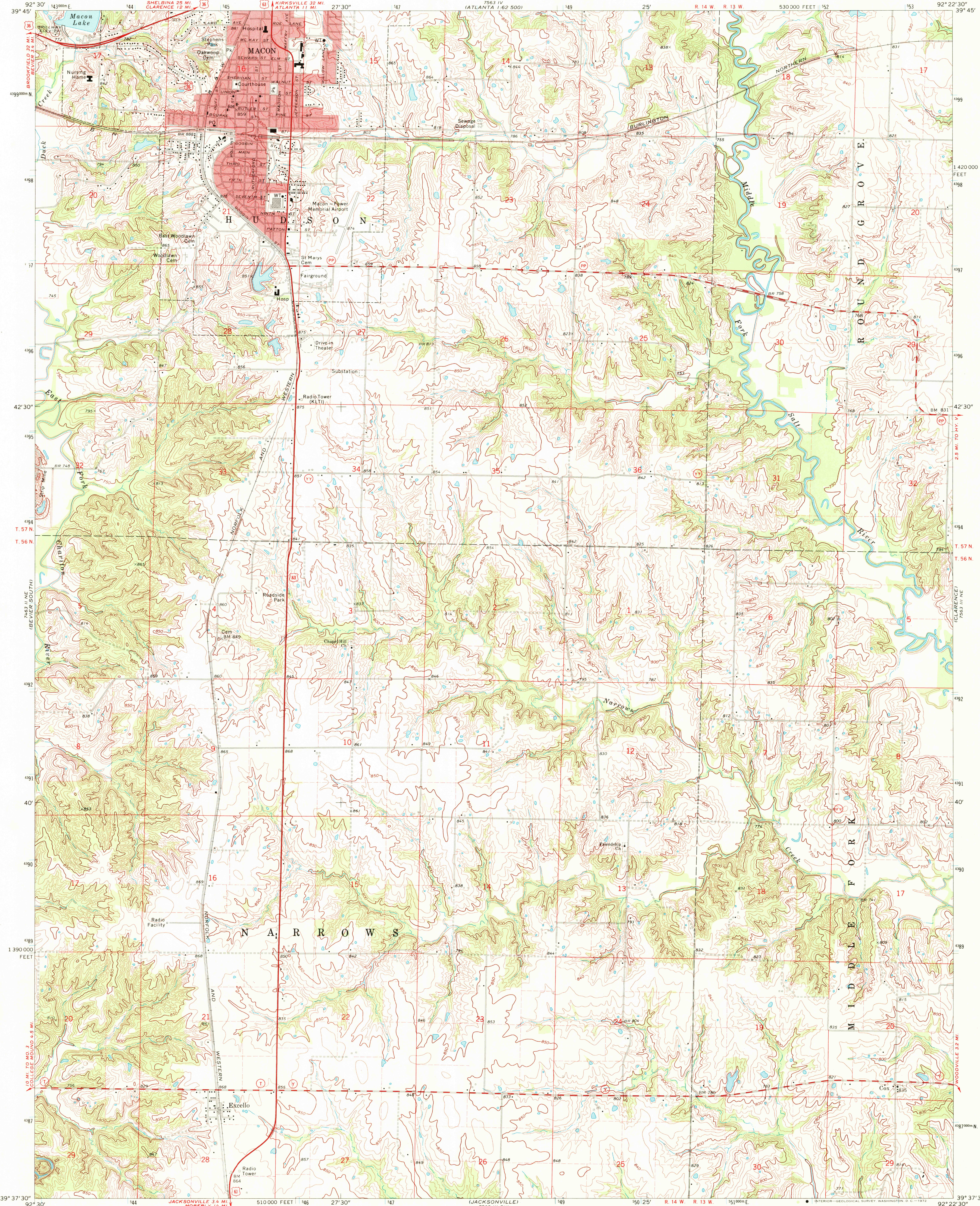


UNITED STATES  
DEPARTMENT OF THE INTERIOR  
GEOLOGICAL SURVEY

STATE OF MISSOURI  
GEOLOGICAL SURVEY AND WATER RESOURCES  
WALLACE B. HOWE, STATE GEOLOGIST

MACON QUADRANGLE  
MISSOURI—MACON CO.  
7.5 MINUTE SERIES (TOPOGRAPHIC)  
NW 1/4 MACON 15' QUADRANGLE



Mapped, edited, and published by the Geological Survey

Control by USGS and USC&GS

Topography by photogrammetric methods from aerial photographs taken 1969. Field checked 1971

Polyconic projection. 1927 North American datum. 10,000-foot grid based on Missouri coordinate system, central zone 1000-meter Universal Transverse Mercator grid ticks, zone 15, shown in blue

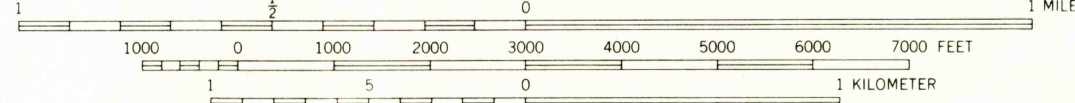
Red tint indicates area in which only landmark buildings are shown

Fine red dashed lines indicate selected fence and field lines where generally visible on aerial photographs. This information is uncheck



UTM GRID AND 1971 MAGNETIC NORTH DECLINATION AT CENTER OF SHEET

SCALE 1:24,000



CONTOUR INTERVAL 10 FEET

DATUM IS MEAN SEA LEVEL

THIS MAP COMPLIES WITH NATIONAL MAP ACCURACY STANDARDS  
FOR SALE BY U.S. GEOLOGICAL SURVEY, DENVER, COLORADO 80225, OR WASHINGTON, D.C. 20242  
AND BY THE MISSOURI GEOLOGICAL SURVEY, ROLLA, MISSOURI 65401  
A FOLDER DESCRIBING TOPOGRAPHIC MAPS AND SYMBOLS IS AVAILABLE ON REQUEST



QUADRANGLE LOCATION

ROAD CLASSIFICATION  
Primary highway, all weather, Light-duty road, all weather, hard surface, improved surface  
Secondary highway, all weather, Unimproved road, fair or dry hard surface, weather  
U.S. Route State Route

USGS  
HISTORICAL FILE  
TOPOGRAPHIC DIVISION

MACON, MO.

NW 1/4 MACON 15' QUADRANGLE  
N3937.5—W9222.5/7.5

1971

AMS 7563 III NW—SERIES V879

JUL 11 1972

2450