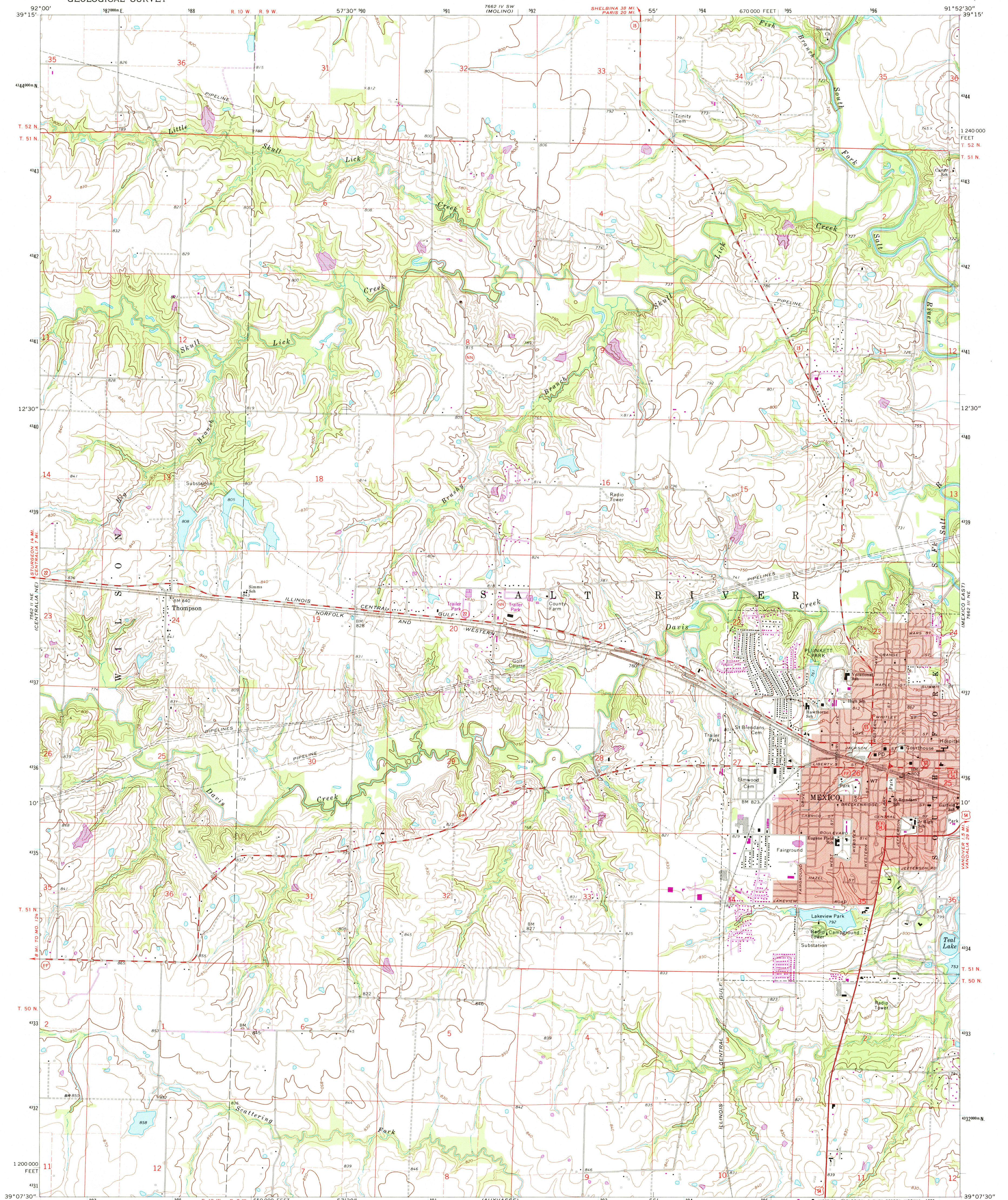


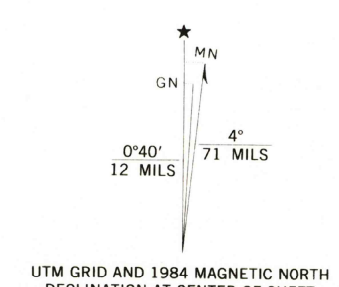
7662 III SW
(MOLINO)

UNITED STATES
DEPARTMENT OF THE INTERIOR
GEOLOGICAL SURVEY

MEXICO WEST QUADRANGLE
MISSOURI—AUDRAIN CO.
7.5 MINUTE SERIES (TOPOGRAPHIC)



Mapped, edited, and published by the Geological Survey
Control by USGS and USCGS
Topography by photogrammetric methods from aerial
photographs taken 1971. Field checked 1972
Projection and 10,000-foot grid ticks: Missouri coordinate
system, central zone (transverse Mercator)
1000-meter Universal Transverse Mercator grid ticks,
zone 15, shown in blue. 1927 North American datum
Red tint indicates area in which only landmark buildings are shown
To place on the predicted North American Datum 1983,
move the projection lines 1 meter south and
13 meters east as shown by dashed corner ticks
Revisions shown in purple compiled from aerial photographs taken 1982 and
other sources. This information not field checked. Map edited 1984



THIS MAP COMPLIES WITH NATIONAL MAP ACCURACY STANDARDS
FOR SALE BY U. S. GEOLOGICAL SURVEY, DENVER, COLORADO 80225, OR RESTON, VIRGINIA 22092
MISSOURI DEPARTMENT OF NATURAL RESOURCES, ROLA, MISSOURI 65401
A FOLDER DESCRIBING TOPOGRAPHIC MAPS AND SYMBOLS IS AVAILABLE ON REQUEST



ROAD CLASSIFICATION
Primary highway, hard surface
Secondary highway, hard surface
Unimproved road
Interstate Route
U. S. Route
State Route
MEXICO WEST, MO.
39091-B8-TF-024
1972
PHOTOREVISED 1984
DMA 7662 III NW-SERIES V879

RETURN TO:
USGS AND HISTORICAL MAP ARCHIVES