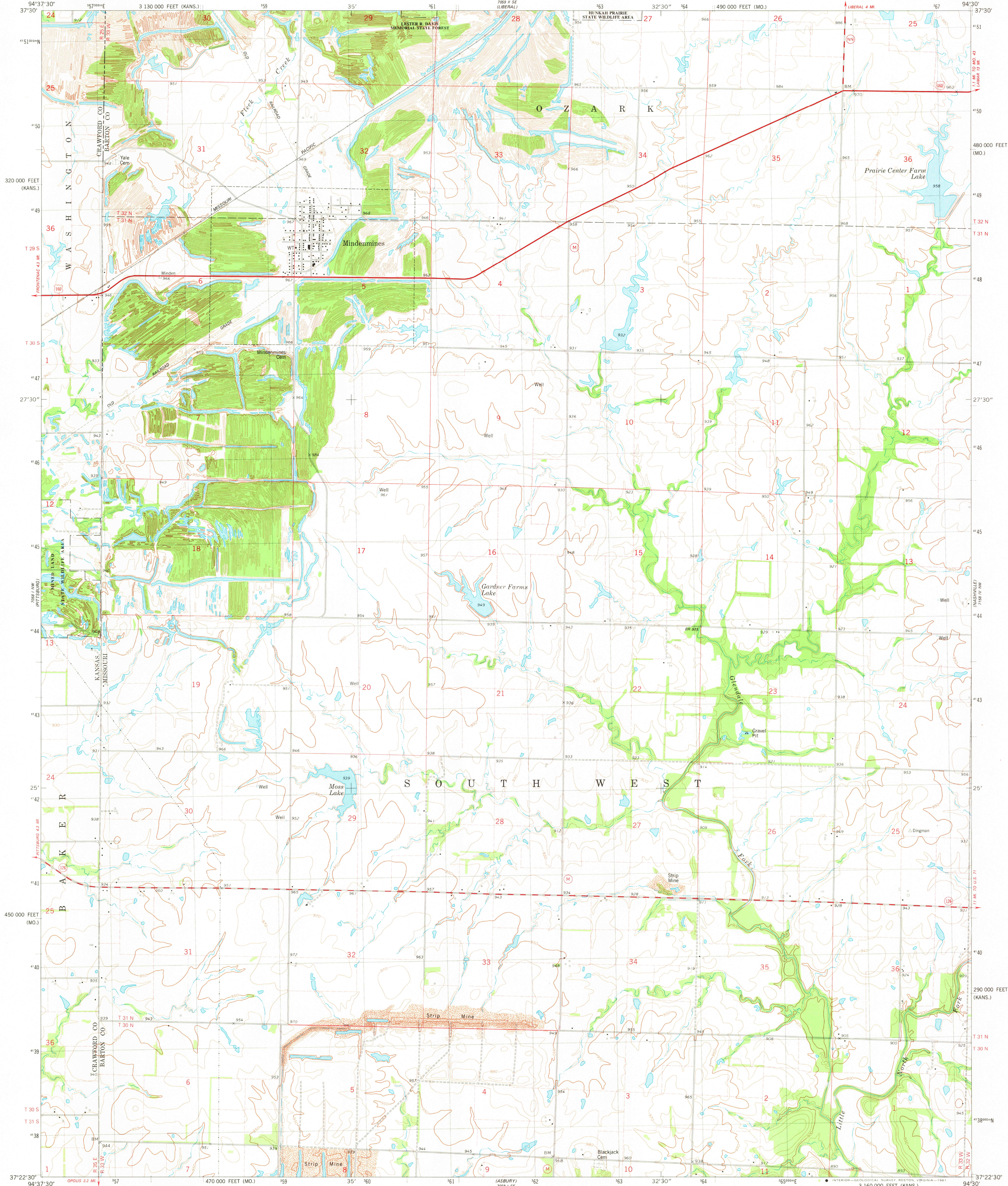


UNITED STATES  
DEPARTMENT OF THE INTERIOR  
GEOLOGICAL SURVEY

MINDENMINES QUADRANGLE  
MISSOURI-KANSAS  
7.5 MINUTE SERIES (TOPOGRAPHIC)  
NE 4 PITTSBURG 15' QUADRANGLE



Mapped, edited, and published by the Geological Survey

Control by USGS and NOS/NOAA

Topography by photogrammetric methods from aerial photographs  
taken 1978. Field checked 1979. Map edited 1981

Projection: Missouri coordinate system, west zone  
(transverse Mercator)

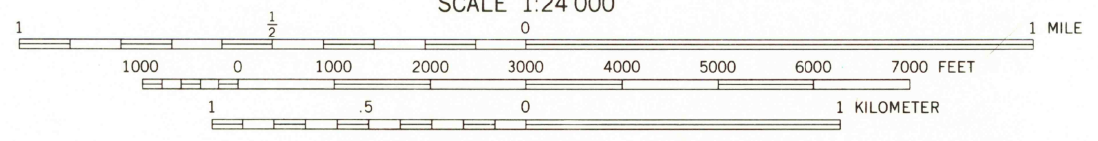
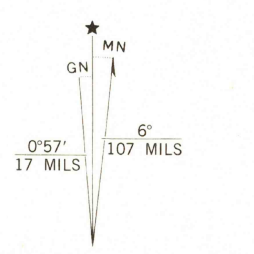
10,000-foot grid ticks based on Missouri coordinate  
system, west zone and Kansas coordinate system, south zone

1000-meter Universal Transverse Mercator grid, zone 15  
1927 North American Datum

To place on the predicted North American Datum 1983  
move the projection lines 2 meters south and

20 meters east as shown by dashed corner ticks

There may be private inholdings within the boundaries of  
the National or State reservations shown on this map



SCALE 1:24 000  
NATIONAL GEODETIC VERTICAL DATUM OF 1929  
CONTOUR INTERVAL 10 FEET  
THIS MAP COMPLIES WITH NATIONAL MAP ACCURACY STANDARDS  
FOR SALE BY U. S. GEOLOGICAL SURVEY, DENVER, COLORADO 80225, OR RESTON, VIRGINIA 22092,  
AND THE DIVISION OF GEOLOGY AND LAND SURVEY  
MISSOURI DEPARTMENT OF NATURAL RESOURCES, ROLLA, MISSOURI 65401  
AND STATE GEOLOGICAL SURVEY, LAWRENCE, KANSAS 66044  
A FOLDER DESCRIBING TOPOGRAPHIC MAPS AND SYMBOLS IS AVAILABLE ON REQUEST



ROAD CLASSIFICATION  
Primary highway, hard surface  
Secondary highway, hard surface  
Light duty road, hard or improved surface  
Unimproved road  
Interstate Route  
U. S. Route  
State Route

MINDENMINES, MO.-KANS.  
NE 4 PITTSBURG 15' QUADRANGLE  
N3722.5-W94307.5

1981

DMA 7058 1 NE-SERIES V879

USGS  
HISTORICAL FILE  
NATIONAL MAPPING DIVISION

JUN 29 1981  
2800