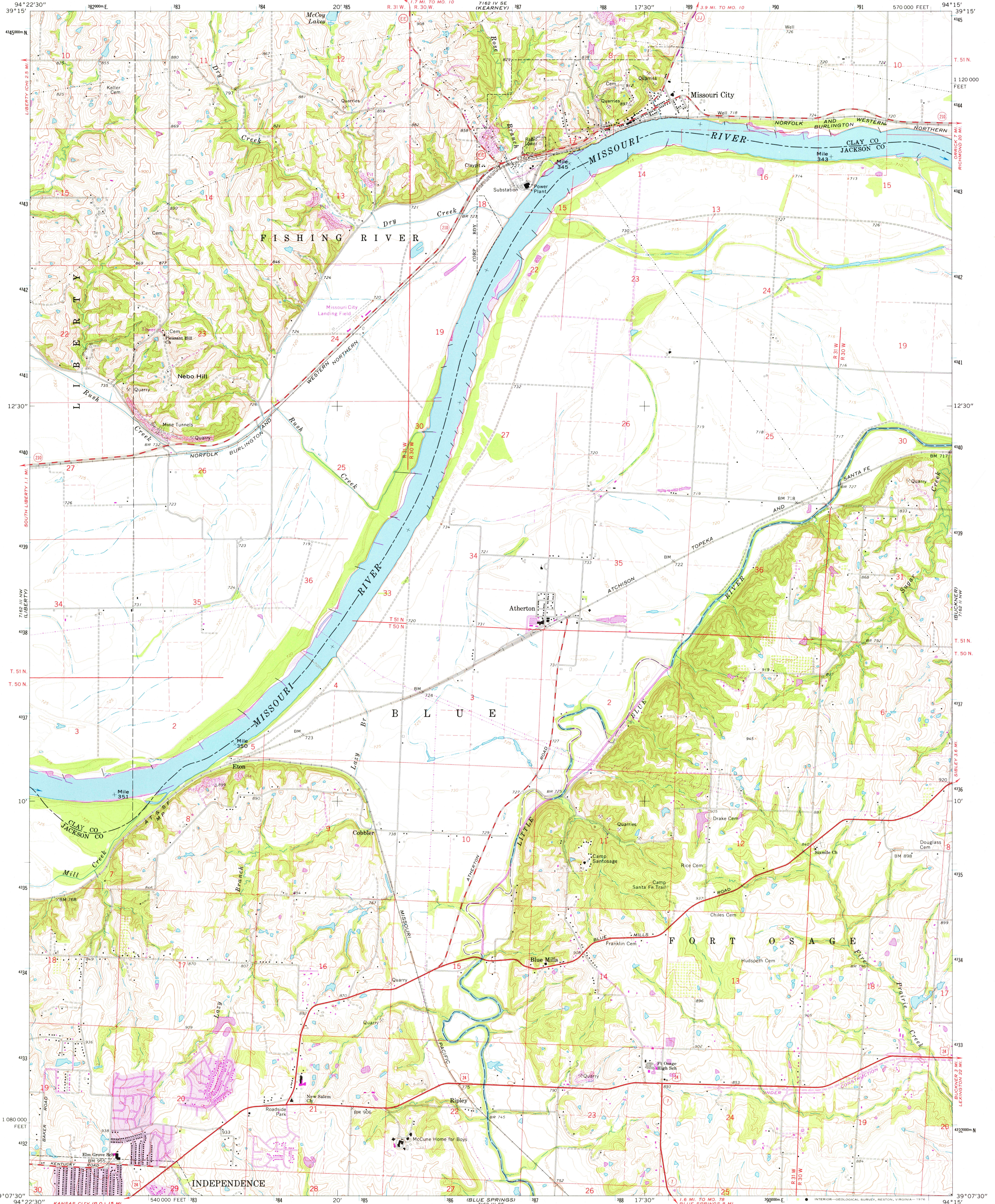


UNITED STATES
DEPARTMENT OF THE INTERIOR
GEOLOGICAL SURVEY

MISSOURI CITY QUADRANGLE
MISSOURI
7.5 MINUTE SERIES (TOPOGRAPHIC)



Mapped, edited, and published by the Geological Survey
Control by USGS and USC&GS

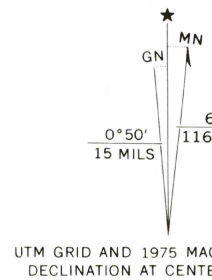
Topography by photogrammetric methods from aerial
photographs taken 1963 and planetable surveys 1965
Supersedes map dated 1935-45

Polyconic projection, 1927 North American datum
10,000-foot grid based on Missouri coordinate system, west zone
1000-metre Universal Transverse Mercator grid ticks,
zone 15, shown in blue

Fine red dashed lines indicate selected fence and field lines where
generally visible on aerial photographs. This information is unchecked

Revisions shown in purple compiled from aerial photographs
taken 1970 and 1975. This information not field checked

Purple tint indicates extension of urban areas



THIS MAP COMPLIES WITH NATIONAL MAP ACCURACY STANDARDS
FOR SALE BY U.S. GEOLOGICAL SURVEY, DENVER, COLORADO 80225, OR RESTON, VIRGINIA 22092
AND BY THE DIVISION OF RESEARCH AND TECHNICAL INFORMATION
MISSOURI DEPARTMENT OF NATURAL RESOURCES, ROLLA, MISSOURI 65401
A FOLDER DESCRIBING TOPOGRAPHIC MAPS AND SYMBOLS IS AVAILABLE ON REQUEST

ROAD CLASSIFICATION
Heavy-duty ——— Light-duty ———
Medium-duty ——— Unimproved dirt ———
U.S. Route ——— State Route ———



USGS
Historical File
Topographic Division

MISSOURI CITY, MO.
N3907.5—W9415/7.5

1965
PHOTOREVISED 1970 AND 1975
AMS 7162 III NE—SERIES V89

FEB 23 1977
3325