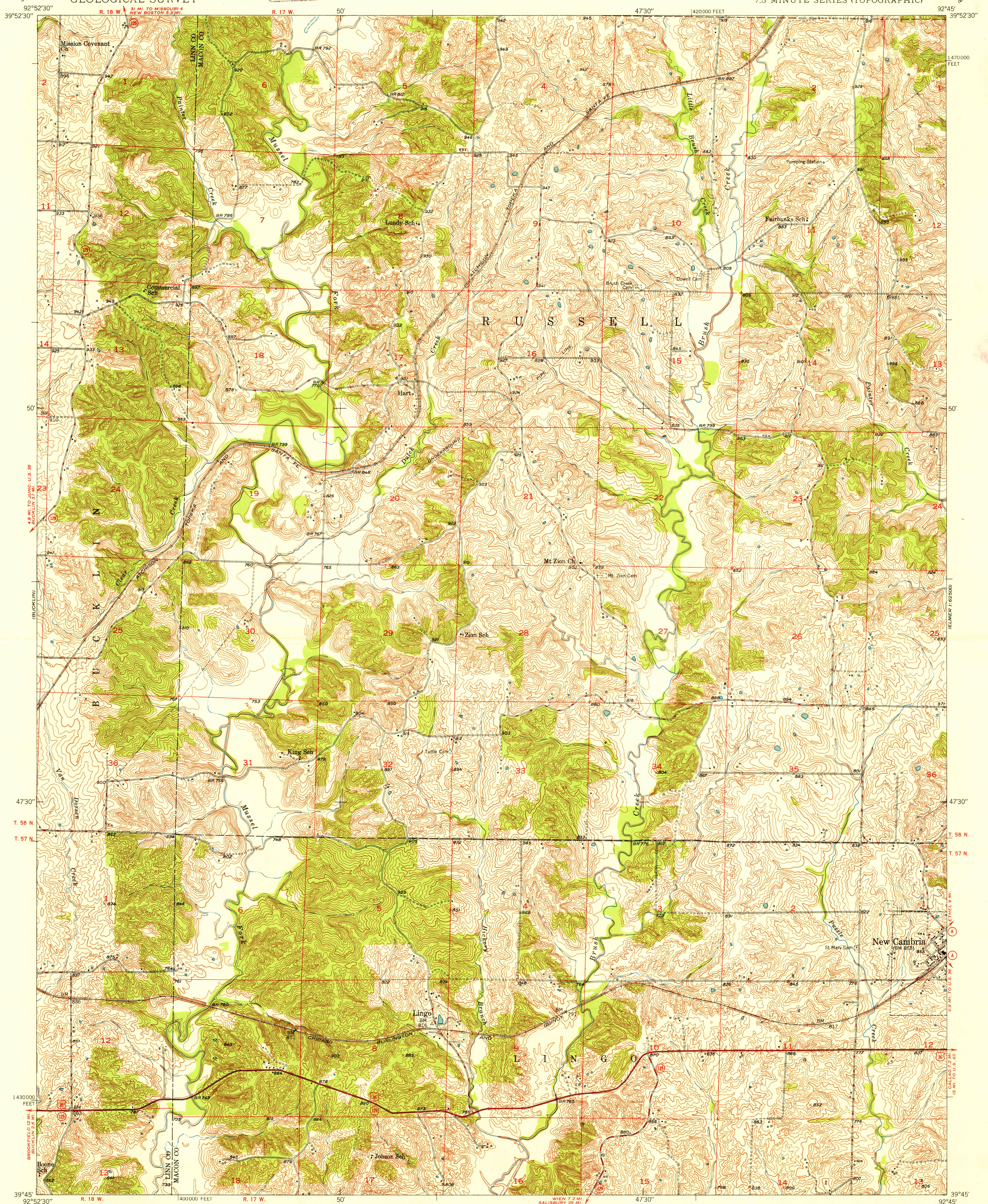


UNITED STATES  
DEPARTMENT OF THE INTERIOR  
GEOLOGICAL SURVEY

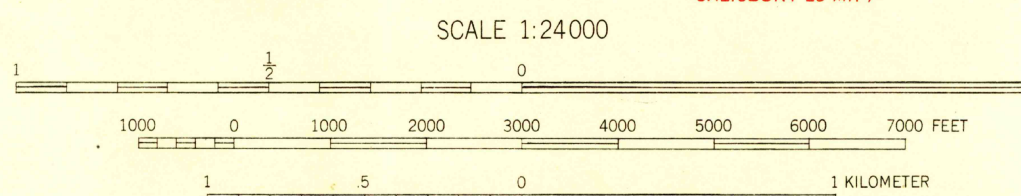
U. S. G. S.  
FILE COPY  
Inspection and Editing.

NEW CAMBRIA WEST QUADRANGLE  
MISSOURI  
7.5 MINUTE SERIES (TOPOGRAPHIC)



Mapped, edited, and published by the Geological Survey  
as part of the Department of the Interior program  
for the development of the Missouri River Basin.  
Control by USGS and USC&GS  
Culture and drainage in part compiled from  
aerial photographs taken 1939  
Topography by plane-table methods 1949  
Polyconic projection. 1927 North American datum  
10,000-foot grid based on Missouri coordinate system,  
central zone

APPROXIMATE MEAN  
DECLINATION, 1949



CONTOUR INTERVAL 10 FEET  
DATUM IS MEAN SEA LEVEL

THIS MAP COMPLIES WITH NATIONAL MAP ACCURACY STANDARDS  
FOR SALE BY U. S. GEOLOGICAL SURVEY, FEDERAL CENTER, DENVER, COLORADO OR WASHINGTON 25, D. C.  
A FOLDER DESCRIBING TOPOGRAPHIC MAPS AND SYMBOLS IS AVAILABLE ON REQUEST

ROAD CLASSIFICATION  
HARD-SURFACE ALL WEATHER ROADS DRY WEATHER ROADS  
Heavy-duty — 4 LANE 16 LANE Improved dirt  
Medium-duty — 4 LANE 16 LANE Unimproved dirt  
Loose-surface, graded, or narrow hard-surface  
U. S. Route State Route

NEW CAMBRIA WEST, MO.  
N3945-W9245/7.5  
EDITION OF 1950

U. S. G. S.  
FILE COPY  
Inspection and Editing.

SEP 8 1950 2075