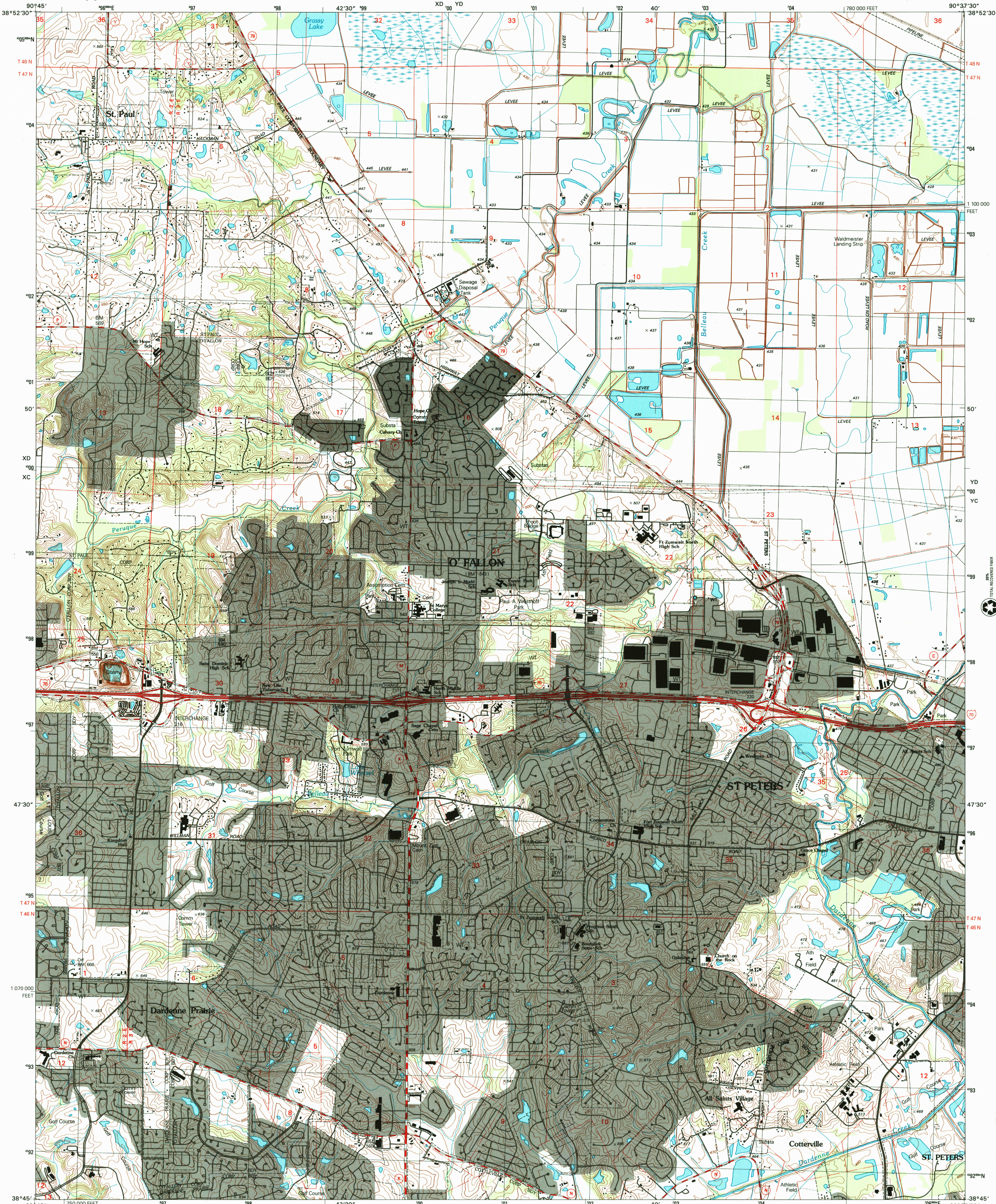




U.S. DEPARTMENT OF THE INTERIOR
U.S. GEOLOGICAL SURVEY

ST CHARLES COUNTY
MISSOURI

O'FALLON QUADRANGLE
MISSOURI-ST. CHARLES CO.
7.5-MINUTE SERIES (TOPOGRAPHIC)



Produced by the United States Geological Survey
Contours.....National Elevation Dataset, 1990
Transportation.....Missouri Department of Transportation, 2002
Hydrography.....St. Charles County, MO, 2002
Utilities.....St. Charles County, MO, 2002
Other Planimetry.....2002
Public Land Survey System and Survey Control.....1993
Boundaries.....St. Charles County, MO, 2002
Woodland.....2002
Houses of Worship, Schools, and Other Labeled Buildings.....1993
North American Datum of 1983 (NAD 83). Projection and
1 000-meter grid: Universal Transverse Mercator, zone 15S
10 000-foot ticks: Missouri Coordinate System of 1983 (east) zone
North American Datum of 1927 (NAD 27) is shown by dashed
corner ticks. The values of the shift between NAD 83 and
NAD 27 for 7.5-minute intersections are obtainable from
National Geodetic Survey NADCON software

UTM GRID AND 2003 MAGNETIC NORTH
DECLINATION AT CENTER OF SHEET

U.S. National Grid	100,000 m (Feet) by 100,000 m (Feet)
XD	YD
XC	YC

Grid Zone Designator
15S

SCALE 1:24 000

1 000 0 1000 2000
KILOMETERS

1 000 0 1000 2000
METERS

1 000 0 1000 2000
MILES

1 000 0 1000 2000
FEET

CONTOUR INTERVAL 10 FEET
NATIONAL GEODETIC VERTICAL DATUM OF 1929
TO CONVERT FROM FEET TO METERS, MULTIPLY BY 0.3048

THIS MAP COMPLIES WITH NATIONAL MAP ACCURACY STANDARDS
FOR SALE BY U.S. GEOLOGICAL SURVEY, P.O. BOX 25286, DENVER, COLORADO 80225
AND DIVISION OF GEOLOGY AND LAND SURVEY
MISSOURI DEPARTMENT OF NATURAL RESOURCES, ROLLA, MISSOURI 65401
A FOLDER DESCRIBING TOPOGRAPHIC MAPS AND SYMBOLS IS AVAILABLE ON REQUEST



ROAD CLASSIFICATION

Primary highway
hard surface
Secondary highway
hard surface
Unimproved road
Light-duty road, hard or
improved surface
Interstate Route
U.S. Route
State Route

DEC 11 2003
O'FALLON, MO
2002

USGS Library
Reston, VA.
Topo Archive

