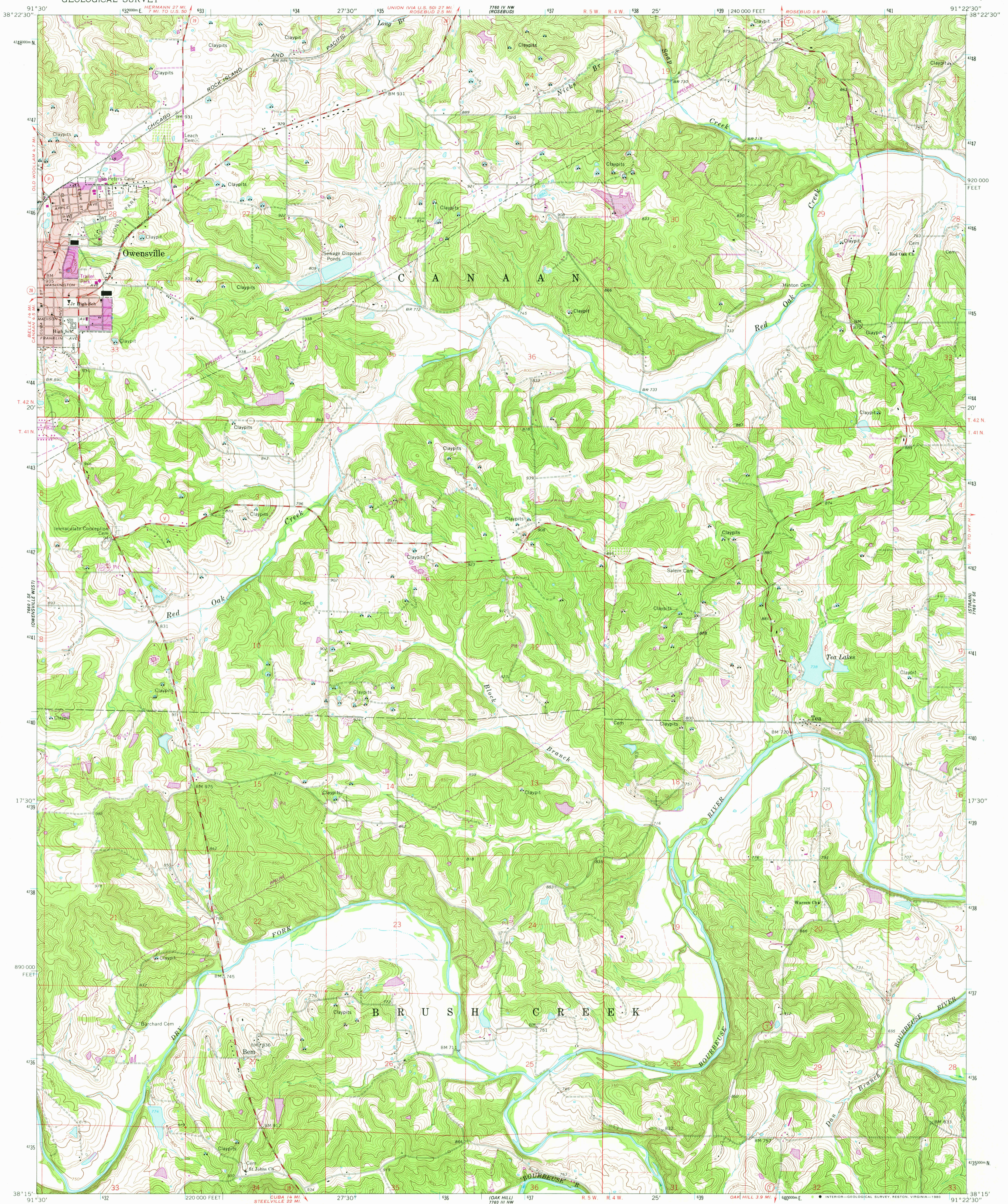


UNITED STATES
DEPARTMENT OF THE INTERIOR
GEOLOGICAL SURVEY

OWENSVILLE EAST QUADRANGLE
MISSOURI—GASCONADE CO.
7.5 MINUTE SERIES (TOPOGRAPHIC)



Mapped, edited, and published by the Geological Survey
Control by USGS and USC&GS
Topography by photogrammetric methods from aerial
photographs taken 1964. Field checked 1966
Polyconic projection. 1927 North American datum
10,000-foot grid based on Missouri coordinate system, east zone
1000-meter Universal Transverse Mercator grid ticks,
zone 15, shown in blue
Red tint indicates area in which only landmark buildings are shown
Fine red dashed lines indicate selected fence and field lines where
generally visible on aerial photographs. This information is unchecked
To place on the predicted North American Datum 1983
move the projection lines 2 meters south and
12 meters east as shown by dashed corner ticks

UTM GRID and 1980 MAGNETIC NORTH
DECLINATION AT CENTER OF SHEET
41° 58' 17" M
0° 58' 17" M

SCALE 1:24,000
1 0 1000 2000 3000 4000 5000 6000 7000 FEET
1 0 5 10 KILOMETER
CONTOUR INTERVAL 10 FEET
NATIONAL GEODETIC VERTICAL DATUM OF 1929

THIS MAP COMPLIES WITH NATIONAL MAP ACCURACY STANDARDS
FOR SALE BY U. S. GEOLOGICAL SURVEY, DENVER, COLORADO 80225, OR RESTON, VIRGINIA 22092,
AND THE DIVISION OF GEOLOGY AND LAND SURVEY
MISSOURI DEPARTMENT OF NATURAL RESOURCES, ROLLA, MISSOURI 65401
A FOLDER DESCRIBING TOPOGRAPHIC MAPS AND SYMBOLS IS AVAILABLE ON REQUEST

Revisions shown in purple compiled from aerial
photographs taken 1978. Map edited 1980
This information not field checked
Purple tint indicates extension of urban areas

ROAD CLASSIFICATION
Medium-duty ——— Light-duty ———
Unimproved dirt ———
State Route



USGS
Historical File
Topographic Division

OWENSVILLE EAST, MO.

N 3815—W 9122.5/7.5
1966
PHOTOREVISED 1980
DMA 7760 IV SW—SERIES V 879

JUN - 3 1980

1550