

(Augusta)  
1:62,500

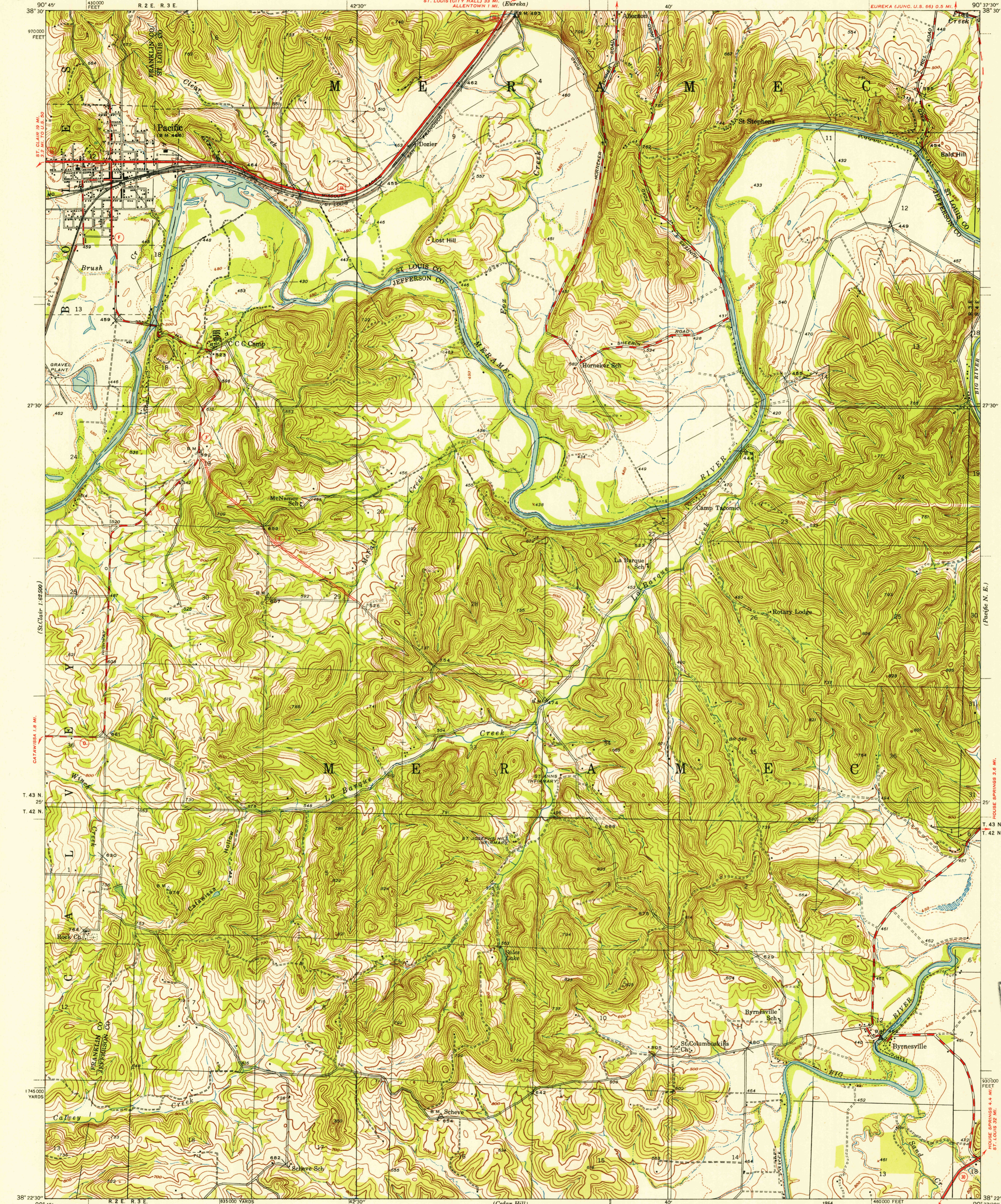
UNITED STATES  
DEPARTMENT OF THE INTERIOR  
GEOLOGICAL SURVEY

STATE OF MISSOURI  
GEOLOGICAL SURVEY AND WATER RESOURCES

MISSOURI  
PACIFIC QUADRANGLE

FILE COPY  
Augusta and Edition

FILE COPY  
Augusta and Edition



(St. Clair)  
1:62,500

Glenn S. Smith, Division Engineer  
Topography by F. L. Whaley,  
Daniel Kennedy, and J. A. Shumate  
Surveyed in 1937

ROAD CLASSIFICATION

Heavy-duty ——— 4 LANE 16 LANE Light-duty ———  
Medium-duty ——— 4 LANE 16 LANE Unimproved dirt ———  
U. S. Route State Route

TRUE NORTH  
MAGNETIC NORTH

Scale: 24000  
5000 0 5000 10000 Feet  
1 0 1 2 Kilometers

Contour interval 20 feet  
10 foot contours added in dashed lines  
Datum is mean sea level

FOR SALE BY U. S. GEOLOGICAL SURVEY, FEDERAL CENTER, DENVER, COLORADO OR WASHINGTON 25, D. C.  
A FOLDER DESCRIBING TOPOGRAPHIC MAPS AND SYMBOLS IS AVAILABLE ON REQUEST

USGS  
Historical File  
Topographic Division

1954  
Polyconic projection, 1927 North American datum  
5000 yard grid based on U. S. zone system, C  
10000 foot grid based on Missouri (East)  
rectangular coordinate system

PACIFIC, MO.  
1937  
N 3822.5-W9037.5/7.5  
RETURN TO:  
USGS AND HISTORICAL MAP ARCHIVES

MAR 17 1954

2110