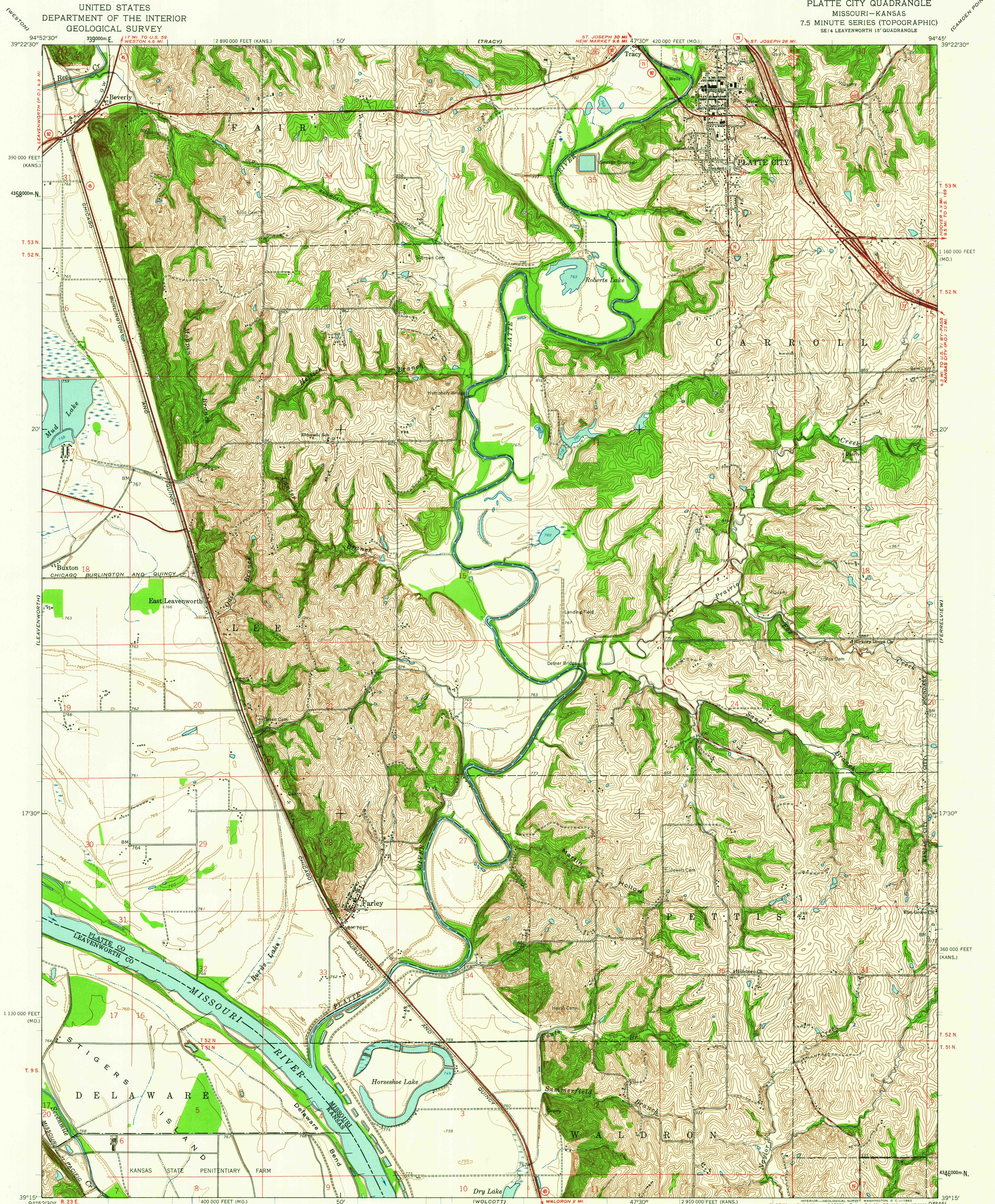


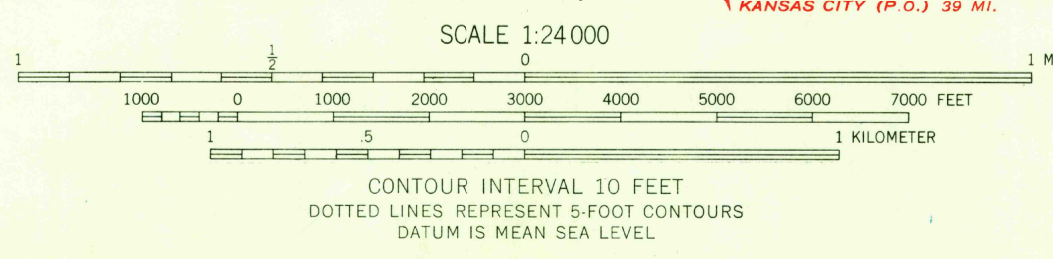
UNITED STATES
DEPARTMENT OF THE INTERIOR
GEOLOGICAL SURVEY

PLATTE CITY QUADRANGLE
MISSOURI-KANSAS
7.5 MINUTE SERIES (TOPOGRAPHIC)
SE 1/4 LEAVENWORTH 15' QUADRANGLE



Mapped, edited, and published by the Geological Survey
Control by USGS and USC&GS
Topography by photogrammetric methods from aerial photographs
taken 1947. Field checked 1948. Revised 1961
Polyconic projection. 1927 North American datum
10,000-foot grids based on Missouri coordinate system, west zone
and Kansas coordinate system, north zone
1000-meter Universal Transverse Mercator grid ticks,
zone 15, shown in blue
Fine red dashed lines indicate selected fence and field lines where
generally visible on aerial photographs. This information is unchecked

TRUE NORTH
MAGNETIC NORTH
APPROXIMATE MEAN
DECLINATION, 1961



THIS MAP COMPLIES WITH NATIONAL MAP ACCURACY STANDARDS
FOR SALE BY U. S. GEOLOGICAL SURVEY, DENVER 25, COLORADO OR WASHINGTON 25, D. C.
THE MISSOURI GEOLOGICAL SURVEY, ROLLA, MISSOURI
AND BY THE STATE GEOLOGICAL SURVEY, LAWRENCE, KANSAS
A FOLDER DESCRIBING TOPOGRAPHIC MAPS AND SYMBOLS IS AVAILABLE ON REQUEST

USGS
Historical File
Topographic Division



ROAD CLASSIFICATION
Heavy-duty ——— Light-duty ———
Medium-duty ——— Unimproved dirt ———
Interstate Route U. S. Route State Route

PLATTE CITY, MO.—KANS.
SE 1/4 LEAVENWORTH 15' QUADRANGLE
N 3915—W 9445/7.5

1961

AUG - 1 1962
2645