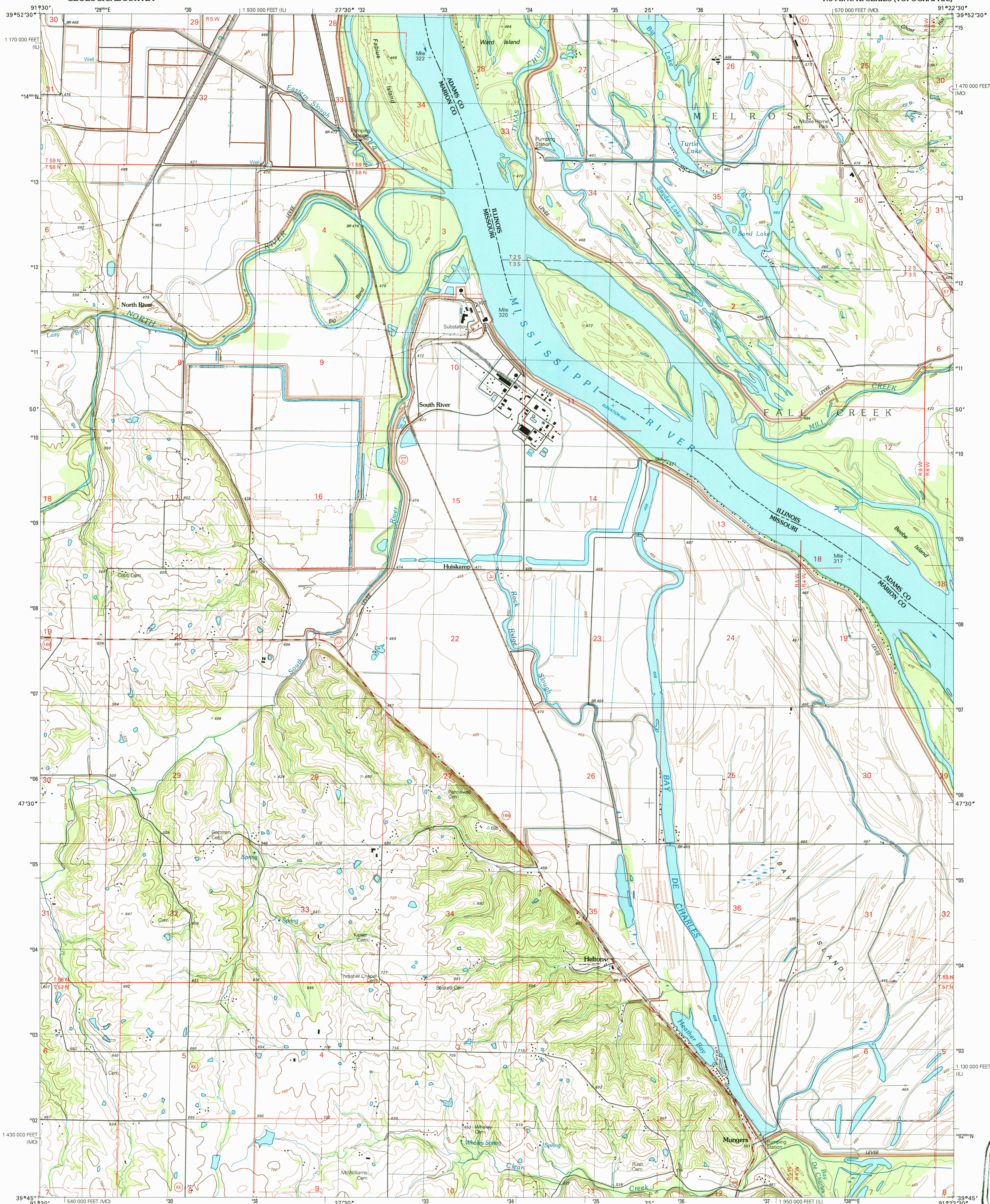


UNITED STATES  
DEPARTMENT OF THE INTERIOR  
GEOLOGICAL SURVEY

QUINCY SW QUADRANGLE  
MISSOURI-ILLINOIS  
7.5-MINUTE SERIES (TOPOGRAPHIC)

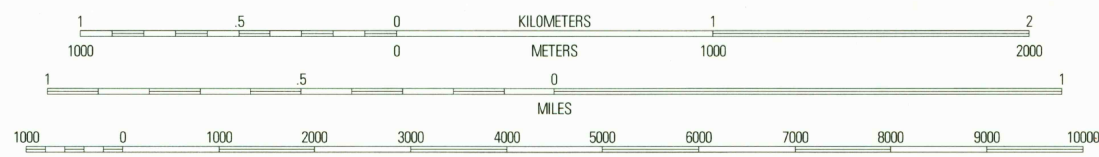


Produced by the United States Geological Survey  
Topography compiled 1969-70. Planimetry derived from imagery  
taken 1966. Public Land Survey System and survey control  
current as of 1971.

North American Datum of 1983 (NAD 83). Projection and  
1000-meter grid: Universal Transverse Mercator, zone 15  
10 000-foot ticks: Missouri Coordinate System of 1983  
(east zone) and Illinois Coordinate System of 1983  
(west zone).

North American Datum of 1927 (NAD 27) is shown by dashed  
corner ticks. The values of the shift between NAD 83 and NAD 27  
for 7.5-minute intersections are obtainable from National Geodetic  
Survey NADCON software.

UTM GRID AND 1997 MAGNETIC NORTH  
DECLINATION AT CENTER OF SHEET



CONTOUR INTERVAL 5 AND 20 FEET  
NATIONAL GEODETIC VERTICAL DATUM OF 1929  
TO CONVERT FROM FEET TO METERS, MULTIPLY BY 0.3048

THIS MAP COMPLIES WITH NATIONAL MAP ACCURACY STANDARDS  
FOR SALE BY U.S. GEOLOGICAL SURVEY, P.O. BOX 25286, DENVER, COLORADO 80225  
DIVISION OF GEOLOGY AND LAND SURVEY  
MISSOURI DEPARTMENT OF NATURAL RESOURCES, ROLLA, MISSOURI 65401  
AND ILLINOIS GEOLOGICAL SURVEY, CHAMPAIGN, ILLINOIS 61820  
A FOLDER DESCRIBING TOPOGRAPHIC MAPS AND SYMBOLS IS AVAILABLE ON REQUEST

ROAD CLASSIFICATION

Primary highway  
hard surface .....  
Secondary highway  
hard surface .....  
Unimproved road .....

Light-duty road, hard or  
improved surface .....  
Interstate Route .....  
U.S. Route .....  
State Route .....

|   |   |                 |           |
|---|---|-----------------|-----------|
| 1 | 2 | 3               | 1 Maywood |
| 4 | 5 | 2 Quincy West   |           |
| 6 | 7 | 3 Quincy East   |           |
|   |   | 4 Palmyra       |           |
|   |   | 5 Marlborough   |           |
|   |   | 6 Rensselaer    |           |
|   |   | 7 Hannibal West |           |
|   |   | 8 Hannibal East |           |

QUINCY SW, MO-IL  
1996

DMA 7763 IV SW-SERIES V879

U.S. GEOLOGICAL SURVEY  
MAP ACQUISITION  
MAR 3 1999  
REC'D FILE 307

ISBN 0-1607-87135-0  
9 780607 871357