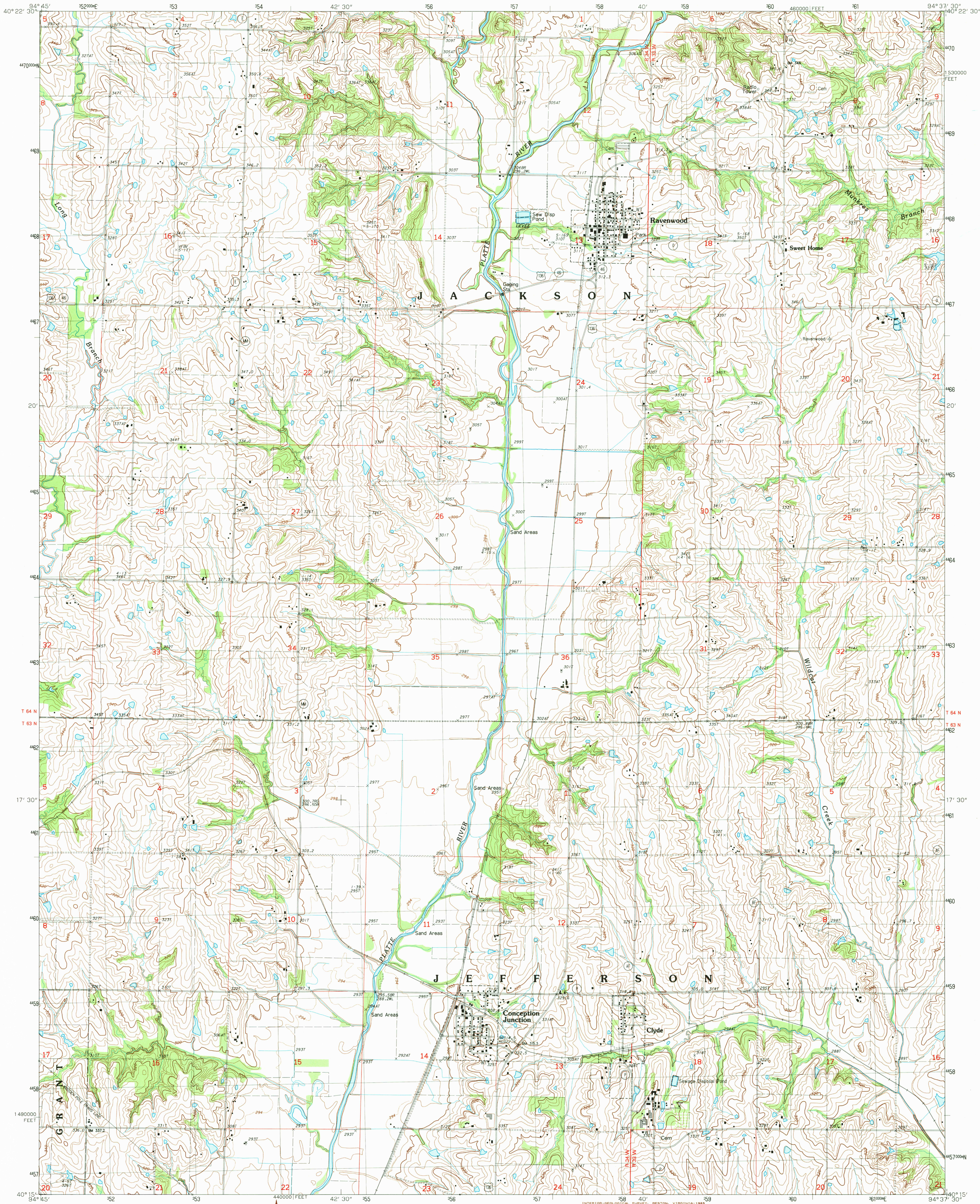


UNITED STATES
DEPARTMENT OF THE INTERIOR
GEOLOGICAL SURVEY

RAVENWOOD QUADRANGLE
MISSOURI-NODAWAY CO.
7.5 MINUTE SERIES (TOPOGRAPHIC)



PRODUCED BY THE UNITED STATES GEOLOGICAL SURVEY
CONTROL BY: USGS AND NOS/NOAA
COMPILED FROM AERIAL PHOTOGRAPHS TAKEN 1981
FIELD CHECKED MAP EDITED 1985
PROJECTION UNIVERSAL TRANSVERSE MERCATOR
GRID: 1000-METER UNIVERSAL TRANSVERSE MERCATOR ZONE 15
8000-FOOT STATE GRID TICS MISSOURI WEST ZONE
UTM GRID DECLINATION 1967 WEST
1985 MAGNETIC NORTH DECLINATION 5'30" EAST
VERTICAL DATUM NATIONAL GEODETIC VERTICAL DATUM OF 1929
HORIZONTAL DATUM 1927 NORTH AMERICAN DATUM
To place on the predicted North American Datum of 1983,
move the projection lines as shown by dashed corner ticks
(3 meters north and 20 meters east)
There may be private inholdings within the boundaries of any
Federal and State Reservations shown on this map
No distinction made between houses, barns, and other buildings

PROVISIONAL MAP
Produced from original
manuscript drawings. Infor-
mation shown as of date of
photography. 1

SCALE 1:24 000
1 000 0 1000 2000 3000 4000 5000 6000 7000 8000 9000 10000
KILOMETERS
METERS
MILES
FOOT
CONTOUR INTERVAL 4 METERS
SUPPLEMENTARY CONTOUR INTERVAL 2 METERS
CONTROL AND FIELD ESTABLISHED ELEVATIONS SHOWN TO THE NEAREST 0.1 METER
OTHER ELEVATIONS SHOWN TO THE NEAREST METER
To convert meters to feet multiply by 3.2808
To convert feet to meters multiply by 0.3048
THIS MAP COMPLES WITH NATIONAL MAP ACCURACY STANDARDS
FOR SALE BY U.S. GEOLOGICAL SURVEY, DENVER, COLORADO 80225, OR RESTON, VIRGINIA 22092
AND DIVISION OF GEOLOGY AND LAND SURVEY
MISSOURI DEPARTMENT OF NATURAL RESOURCES, ROLLA, MISSOURI 65401

CONTOURS AND ELEVATIONS IN METERS
ROAD LEGEND
Improved Road
Unimproved Road
Trail
Interstate Route U.S. Route State Route
RAVENWOOD, MISSOURI
PROVISIONAL EDITION 1985
40094-C6-TM-024
ADJOINING 7.5' QUADRANGLE NAMES
1 2 3 4 5 6 7 8
1 Pickering
2 Farnell West
3 Farnell East
4 Marville East
5 Alanthus Grove
6 Barnard
7 Guilford
8 Stanberry

RETURN TO:
USGS AND HISTORICAL MAP ARCHIVES