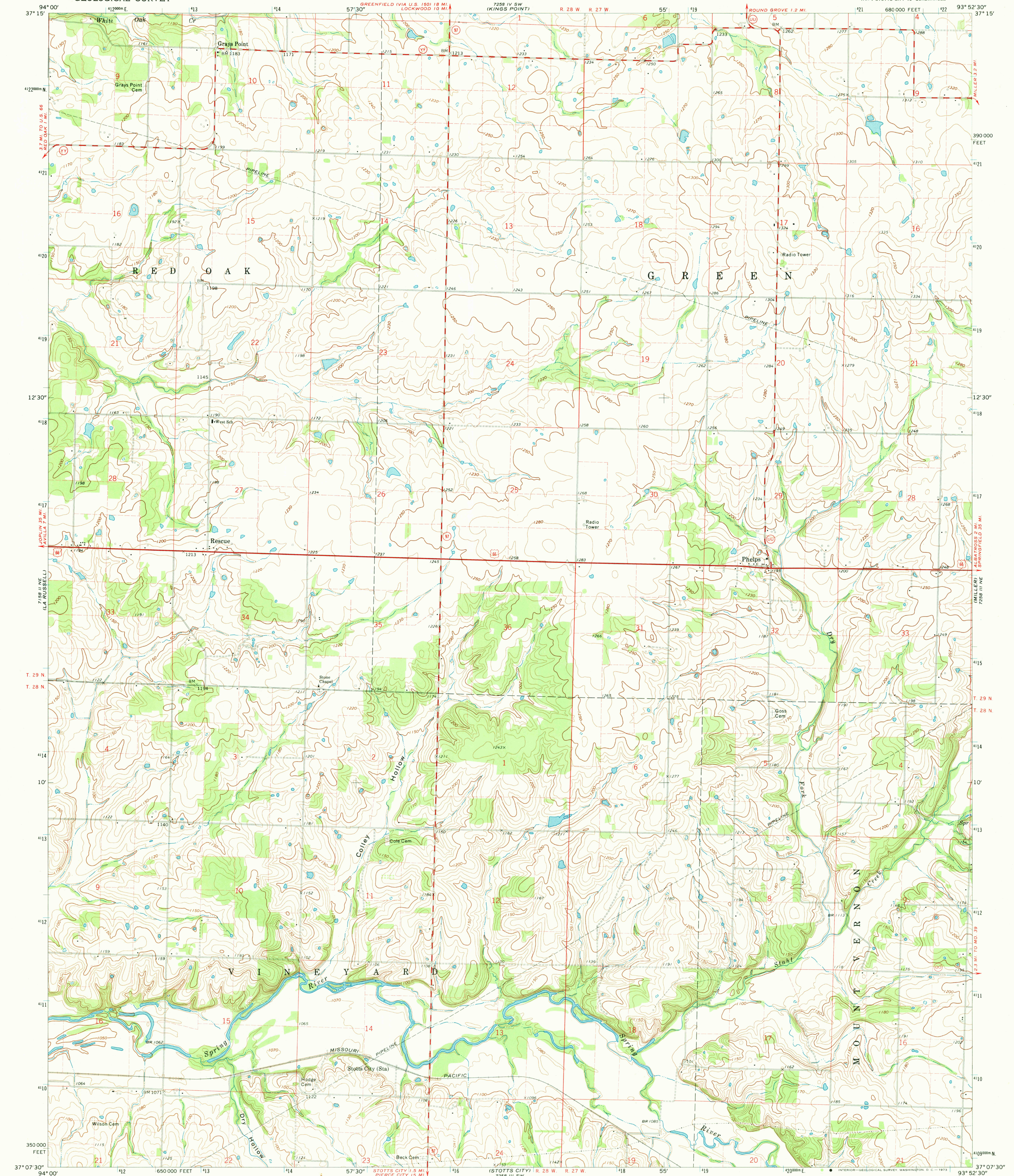
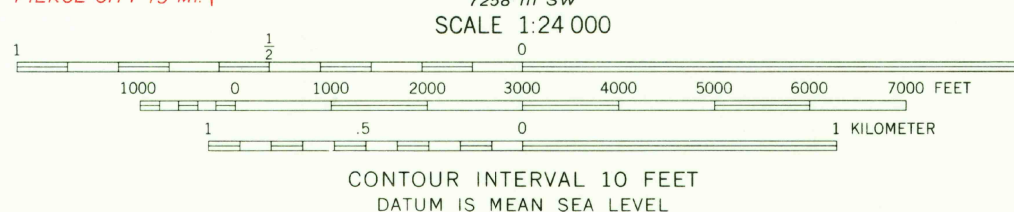
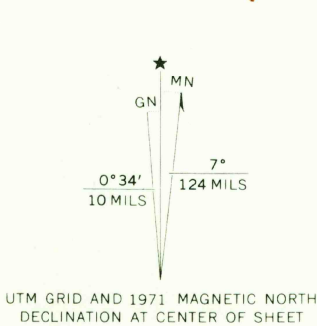


UNITED STATES  
DEPARTMENT OF THE INTERIOR  
GEOLOGICAL SURVEY

RESCUE QUADRANGLE  
MISSOURI—LAWRENCE CO.  
7.5 MINUTE SERIES (TOPOGRAPHIC)  
NW 4 STOTTS CITY 15' QUADRANGLE



Mapped, edited, and published by the Geological Survey  
Control by USGS and USC&GS  
Topography by photogrammetric methods from aerial  
photographs taken 1970. Field checked 1971  
Polyconic projection. 1927 North American datum  
10,000-foot grid based on Missouri coordinate system, west zone  
1000-meter Universal Transverse Mercator grid ticks,  
zone 15, shown in blue  
Fine red dashed lines indicate selected fence and field lines where  
generally visible on aerial photographs. This information is unchecked



THIS MAP COMPLIES WITH NATIONAL MAP ACCURACY STANDARDS  
FOR SALE BY U.S. GEOLOGICAL SURVEY, DENVER, COLORADO 80225, OR WASHINGTON, D. C. 20242  
AND BY THE MISSOURI GEOLOGICAL SURVEY, ROLLA, MISSOURI 65401  
A FOLDER DESCRIBING TOPOGRAPHIC MAPS AND SYMBOLS IS AVAILABLE ON REQUEST

ROAD CLASSIFICATION  
Primary highway, hard surface —————  
Secondary highway, hard surface —————  
Unimproved road —————  
Interstate Route ————  
U. S. Route ————  
State Route ————



RESCUE, MO.  
NW 4 STOTTS CITY 15' QUADRANGLE  
N 3707.5—W 9352.5/7.5

1971

AMS 7258 III NW—SERIES V879

MAY 30 1973

3195