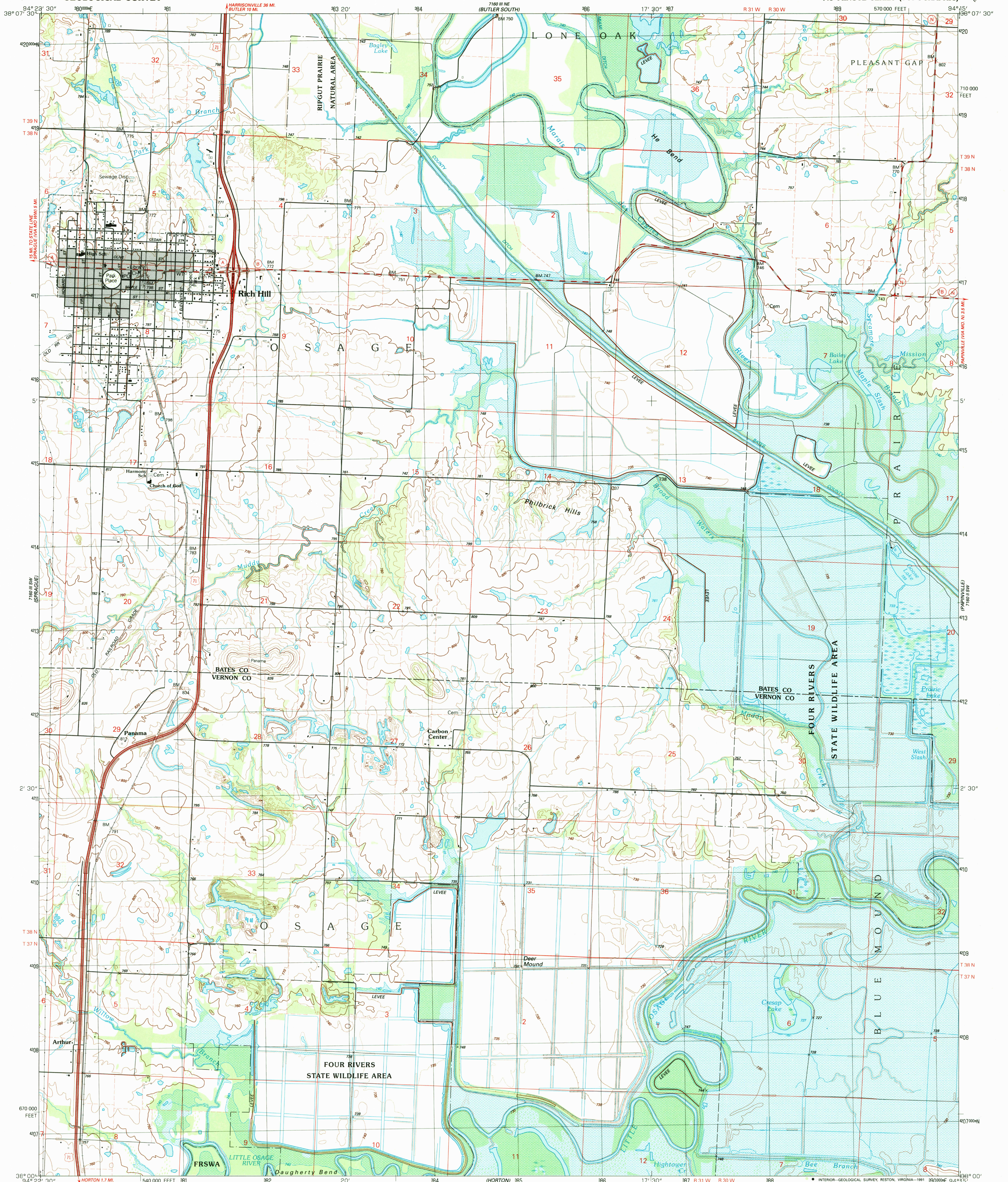
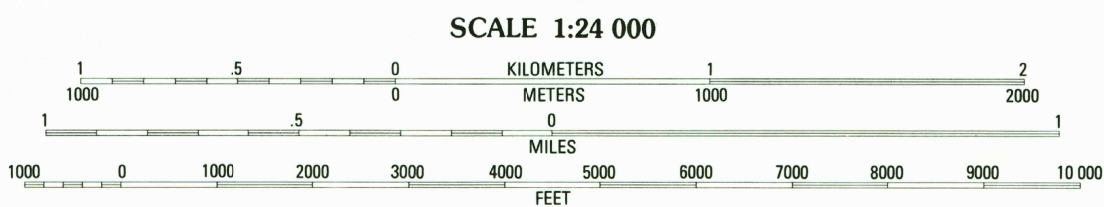
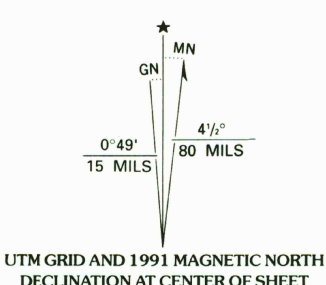


UNITED STATES
DEPARTMENT OF THE INTERIOR
GEOLOGICAL SURVEY

RICH HILL QUADRANGLE
MISSOURI
7.5 MINUTE SERIES (TOPOGRAPHIC)

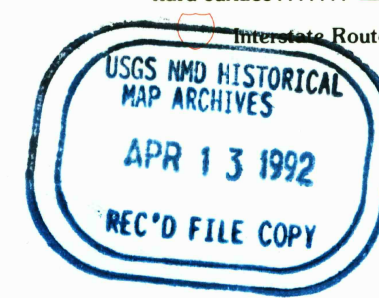


Produced by the United States Geological Survey
Control by USGS and NOS/NOAA
Compiled from aerial photographs taken 1986
Field checked 1989. Map edited 1991
Projection and 10,000-foot grid ticks: Missouri coordinate
system, west zone (transverse Mercator)
1000-meter Universal Transverse Mercator grid, zone 15
1927 North American Datum
The difference between 1927 North American Datum and North
American Datum of 1983 (NAD 83) for 7.5-minute intersections
is given in USGS Bulletin 1875. The NAD 83 is shown by
dashed corner ticks
There may be private inholdings within the boundaries of
the National or State reservations shown on this map
Areas covered by dashed light-blue pattern are subject
to controlled inundation by Harry S. Truman Reservoir
Gray tint indicates area in which only landmark buildings are shown
Fine red dashed lines indicate selected fence and field lines where
generally visible on aerial photographs. This information is unchecked



ROAD CLASSIFICATION
Primary highway, hard surface Light-duty road, hard or improved surface
Secondary highway, hard surface Unimproved road
Interstate Route U. S. Route State Route

THIS MAP COMPLIES WITH NATIONAL MAP ACCURACY STANDARDS
FOR SALE BY U. S. GEOLOGICAL SURVEY, DENVER, COLORADO 80225, OR RESTON, VIRGINIA 22092
AND DIVISION OF GEOLOGY AND LAND SURVEY
MISSOURI DEPARTMENT OF NATURAL RESOURCES, ROLLA, MISSOURI 65401
A FOLDER DESCRIBING TOPOGRAPHIC MAPS AND SYMBOLS IS AVAILABLE ON REQUEST



RICH HILL, MO.

38094-A3-T-024

1991

DMA 7160 III SE-SERIES V879