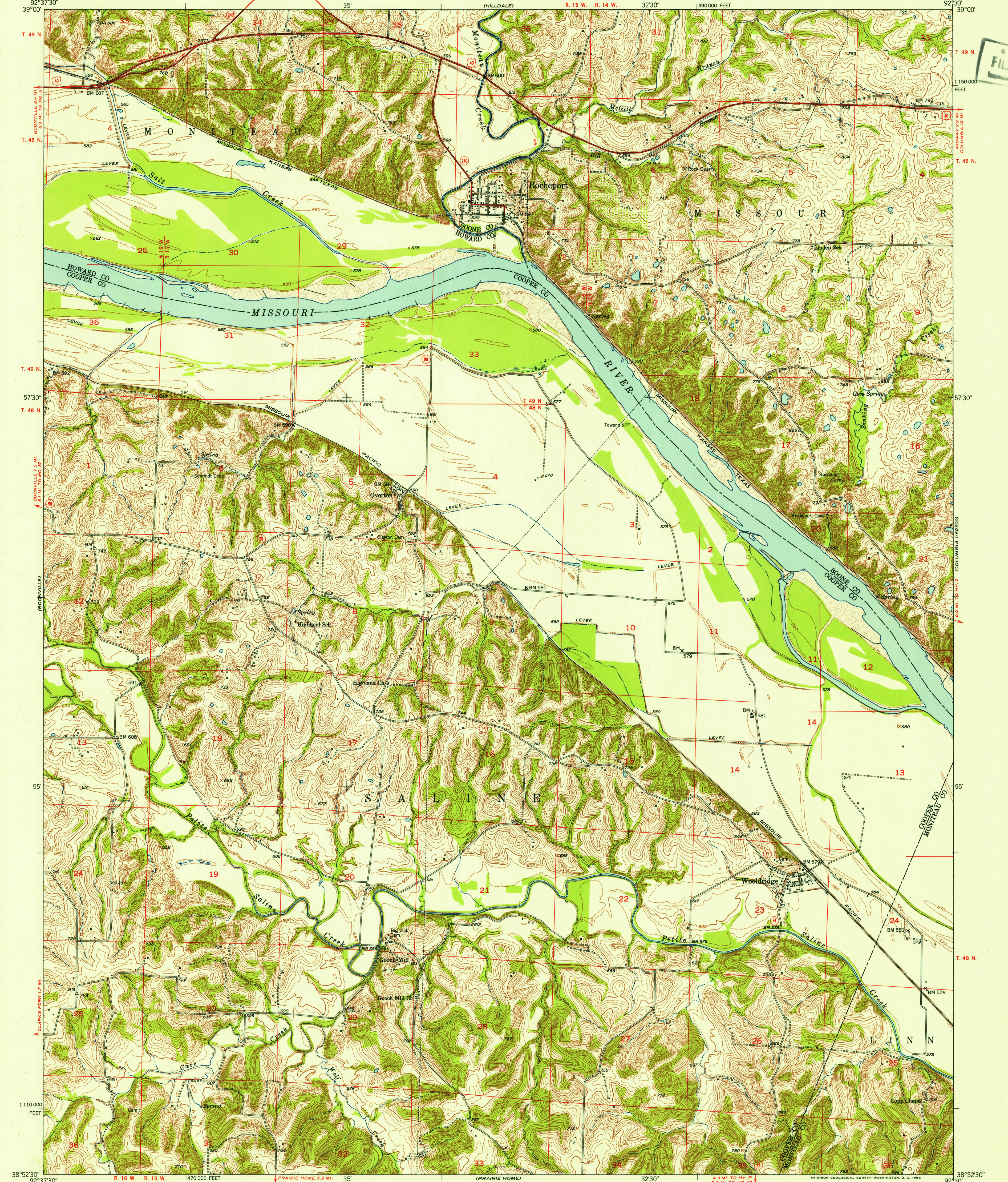
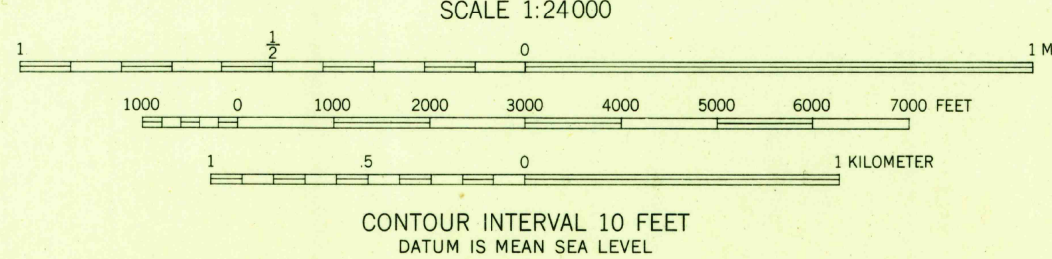


FILE COPY
Inspection and Editing



Mapped, edited, and published by the Geological Survey
Control by USGS, USC&GS, and USCE
Topography from aerial photographs by Kelsh plotter
and by plane-table surveys 1952. Aerial photographs taken 1947
Polyconic projection. 1927 North American datum
10,000-foot grid based on Missouri coordinate system,
central zone

TRUE NORTH
MAGNETIC NORTH
APPROXIMATE MEAN
DECLINATION, 1952



USGS
Historical File
Topographic Division



ROAD CLASSIFICATION
Heavy-duty ——— 4 LANE 16 LANE ——— Light-duty ———
Medium-duty ——— 4 LANE 16 LANE ——— Unimproved dirt ———
U.S. Route State Route

FILE COPY
Inspection and Editing

ROCHEPORT, MO.
N 3852.5—W 9230/7.5

1952

JAN 15 1954
3215