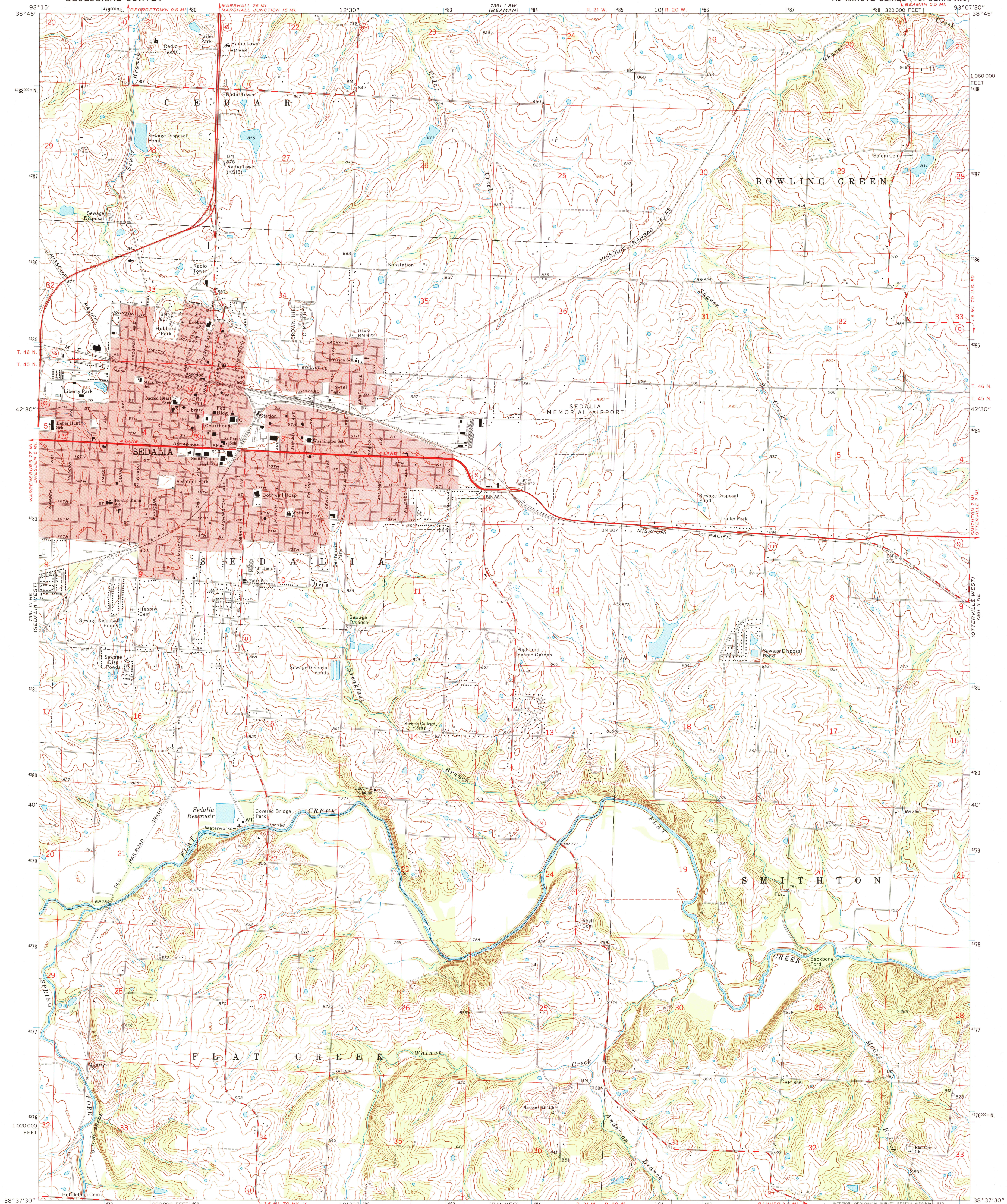
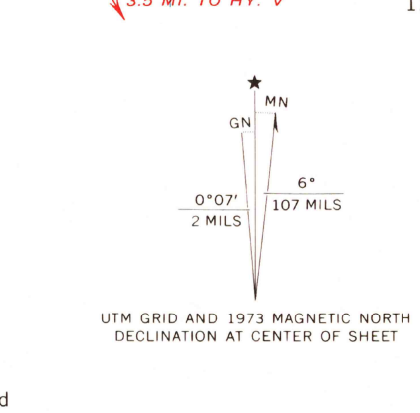


UNITED STATES
DEPARTMENT OF THE INTERIOR
GEOLOGICAL SURVEY

SEDALIA EAST QUADRANGLE
MISSOURI—PETTIS CO.
7.5 MINUTE SERIES (TOPOGRAPHIC)



Maped, edited, and published by the Geological Survey
Control by USGS and NOS/NOAA
Topography by photogrammetric methods from aerial
photographs taken 1972. Field checked 1973
Supersedes map dated 1944
Projection and 10,000-foot grid ticks: Missouri coordinate
system, central zone (transverse Mercator)
1000-metre Universal Transverse Mercator grid ticks,
zone 15, shown in blue. 1927 North American datum
Red tint indicates areas in which only landmark buildings are shown
Fine red dashed lines indicate selected fence and field lines where
generally visible on aerial photographs. This information is unchecked



SCALE 1:24,000
CONTOUR INTERVAL 10 FEET
NATIONAL GEODETIC VERTICAL DATUM OF 1929
THIS MAP COMPLIES WITH NATIONAL MAP ACCURACY STANDARDS
FOR SALE BY U.S. GEOLOGICAL SURVEY, DENVER, COLORADO 80225, OR RESTON, VIRGINIA 22092
AND BY THE DIVISION OF RESEARCH AND TECHNICAL INFORMATION
MISSOURI DEPARTMENT OF NATURAL RESOURCES, ROLLA, MISSOURI 65401
A FOLDER DESCRIBING TOPOGRAPHIC MAPS AND SYMBOLS IS AVAILABLE ON REQUEST

ROAD CLASSIFICATION

Primary highway, hard surface	Light-duty road, hard or improved surface
Secondary highway, hard surface	Unimproved road
Interstate Route	U.S. Route
	State Route

USGS AND HISTORICAL MAP ARCHIVES
SEP 2 2 1995
REC'D FILE COPY

SEDALIA EAST, MO.
N 3837.5—W 9307.5/7.5
1973
AMS 7361 II NW—SERIES V879

