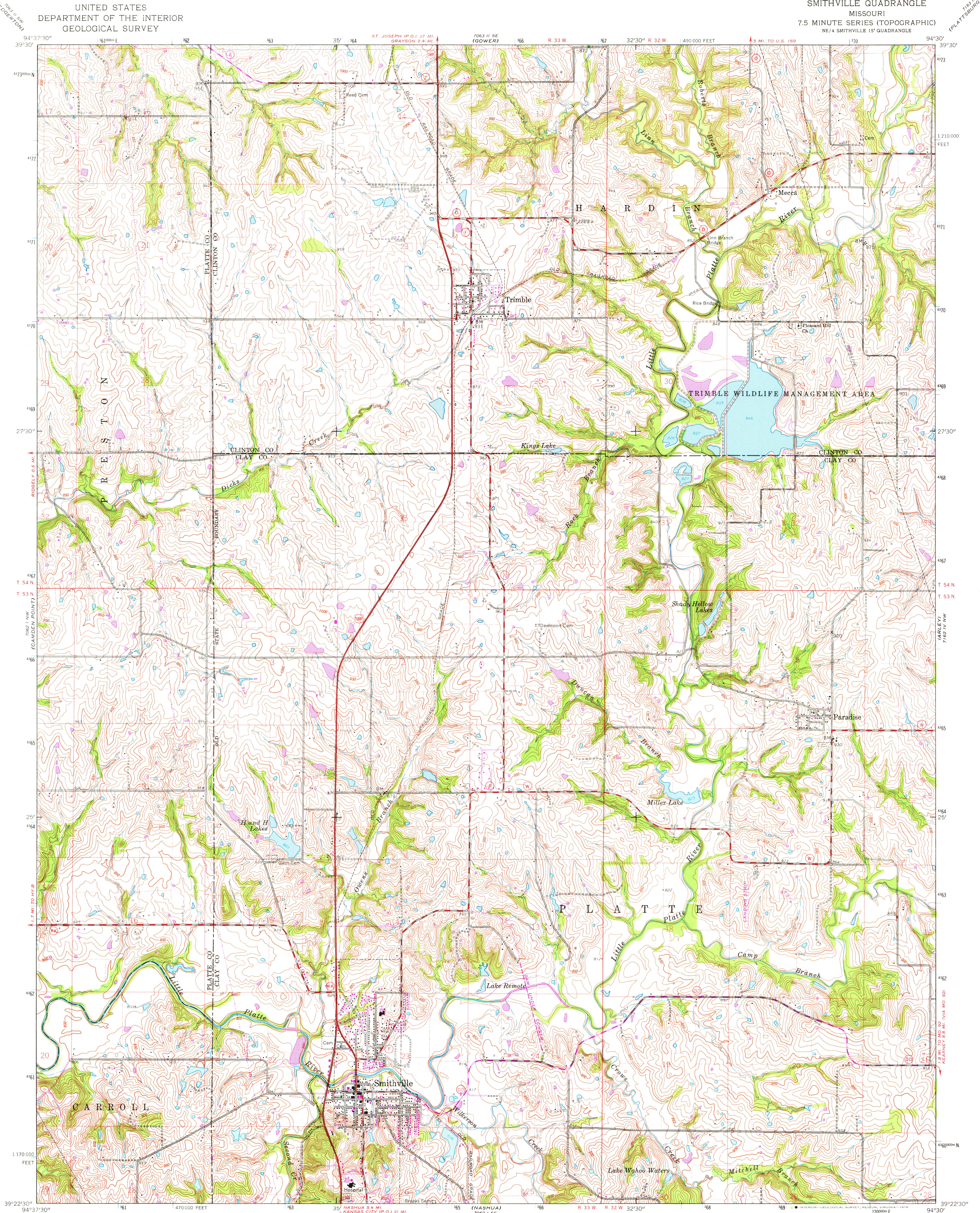
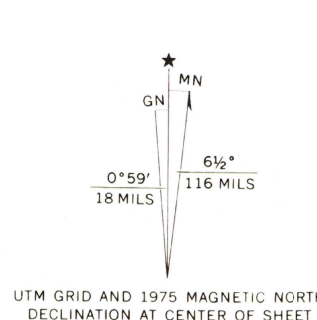


UNITED STATES  
DEPARTMENT OF THE INTERIOR  
GEOLOGICAL SURVEY

SMITHVILLE QUADRANGLE  
MISSOURI  
7.5 MINUTE SERIES (TOPOGRAPHIC)  
NE 1/4 SMITHVILLE 15' QUADRANGLE



Mapped, edited, and published by the Geological Survey  
Control by USGS and USC&GS  
Topography by photogrammetric methods from aerial photographs  
taken 1947. Field checked 1948. Revised 1961  
Polyconic projection. 1927 North American datum  
10,000-foot grid based on Missouri coordinate system, west zone  
1000-metre Universal Transverse Mercator grid ticks,  
zone 15, shown in blue  
Fine red dashed lines indicate selected fence and field lines where  
generally visible on aerial photographs. This information is unchecked  
Revisions shown in purple compiled from aerial photographs  
taken 1975. This information not field checked



CONTOUR INTERVAL 10 FEET  
NATIONAL GEODETIC VERTICAL DATUM OF 1929  
THIS MAP COMPLIES WITH NATIONAL MAP ACCURACY STANDARDS  
FOR SALE BY U.S. GEOLOGICAL SURVEY, DENVER, COLORADO 80225, OR RESTON, VIRGINIA 22092  
AND BY THE DIVISION OF RESEARCH AND TECHNICAL INFORMATION  
MISSOURI DEPARTMENT OF NATURAL RESOURCES, ROLLA, MISSOURI 65401  
A FOLDER DESCRIBING TOPOGRAPHIC MAPS AND SYMBOLS IS AVAILABLE ON REQUEST



ROAD CLASSIFICATION  
Heavy-duty ——— Light-duty ———  
Medium-duty ——— Unimproved dirt ———  
U.S. Route ——— State Route ———  
SMITHVILLE, MO.  
NE 1/4 SMITHVILLE 15' QUADRANGLE  
N 3922.5—W 9430/7.5  
1961  
PHOTOREVISED 1975  
AMS 7062 I NE—SERIES V879  
USGS  
Historical File  
Topographic Division

NOV 23 1976