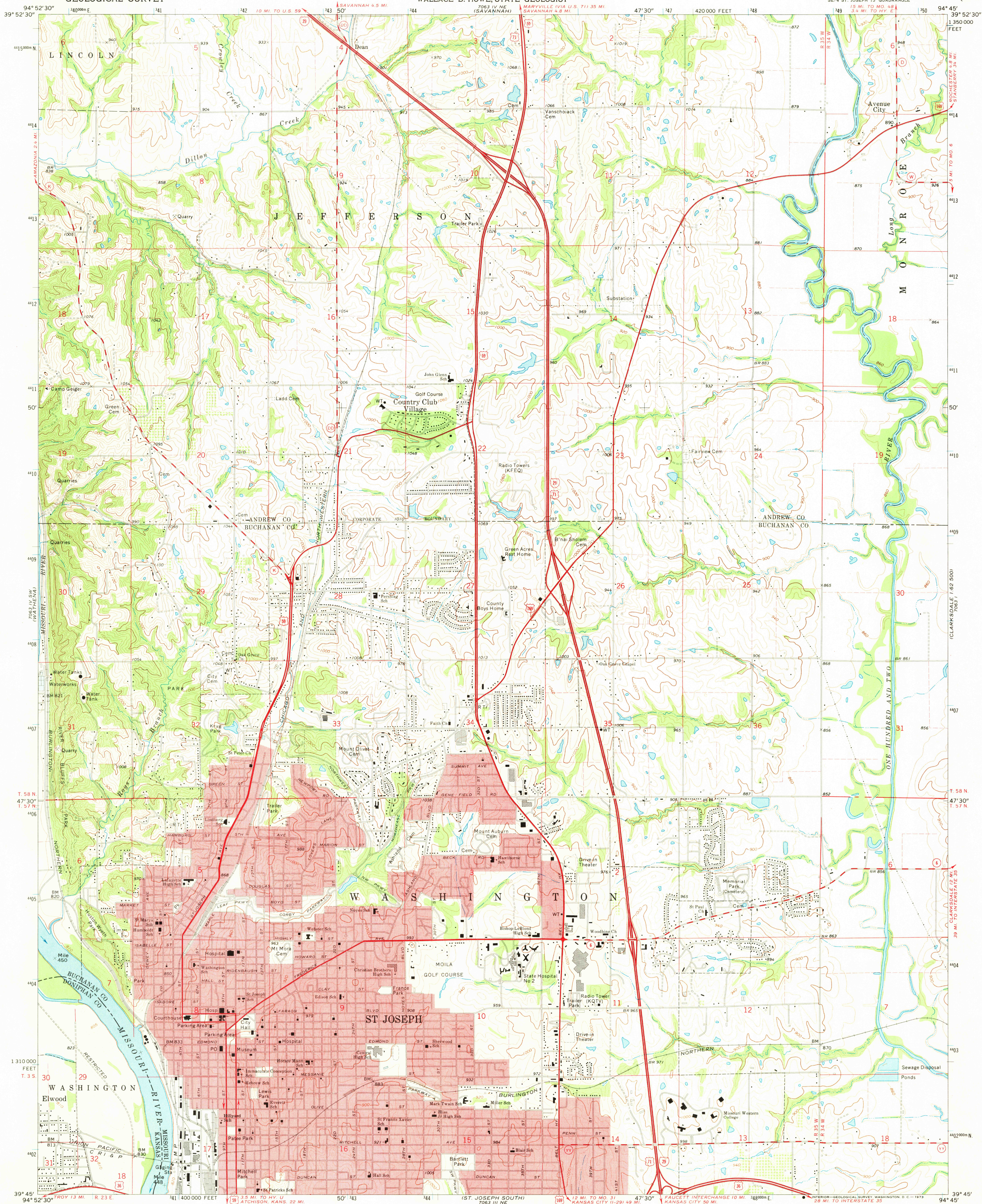


UNITED STATES  
DEPARTMENT OF THE INTERIOR  
GEOLOGICAL SURVEY

STATE OF MISSOURI  
GEOLOGICAL SURVEY AND WATER RESOURCES  
WALLACE B. HOWE, STATE GEOLOGIST

ST. JOSEPH NORTH QUADRANGLE  
MISSOURI-KANSAS  
7.5 MINUTE SERIES (TOPOGRAPHIC)



Mapped, edited, and published by the Geological Survey

Control by USGS and USC&GS

Topography by photogrammetric methods from aerial photographs taken 1969. Field checked 1971

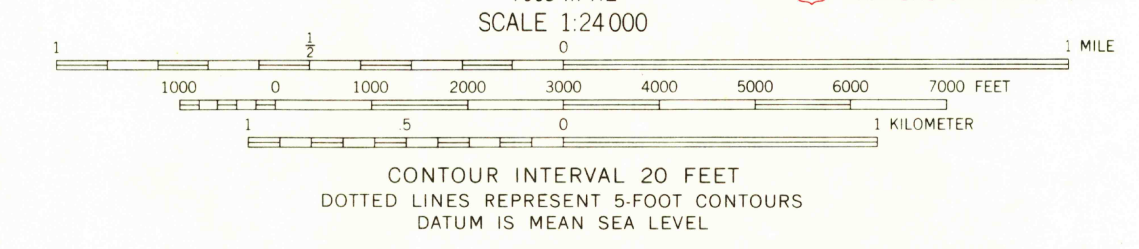
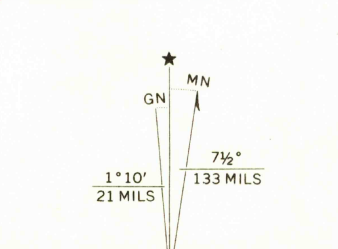
Polyconic projection. 1927 North American datum

10,000-foot grid based on Missouri coordinate system, west zone

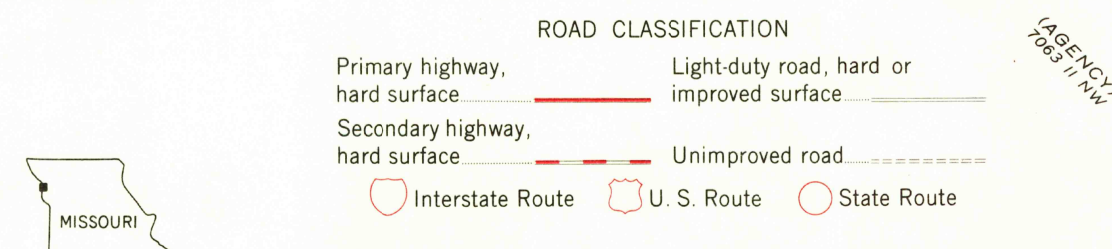
1000-meter Universal Transverse Mercator grid ticks, zone 15, shown in blue

Red tint indicates areas in which only landmark buildings are shown

Fine red dashed lines indicate selected fence and field lines where generally visible on aerial photographs. This information is unchecked



THIS MAP COMPLIES WITH NATIONAL MAP ACCURACY STANDARDS  
FOR SALE BY U.S. GEOLOGICAL SURVEY, DENVER, COLORADO 80225, OR WASHINGTON, D.C. 20422,  
MISSOURI GEOLOGICAL SURVEY, ROLLA, MISSOURI 65401,  
AND STATE GEOLOGICAL SURVEY, LAWRENCE, KANSAS 66044  
A FOLDER DESCRIBING TOPOGRAPHIC MAPS AND SYMBOLS IS AVAILABLE ON REQUEST



ST. JOSEPH NORTH, MO.-KANS.  
SE/4 ST. JOSEPH 15' QUADRANGLE  
N3945-W9445/7.5  
1971  
AMS 7063 IV SE-SERIES V879

MAR 1 1979  
3070