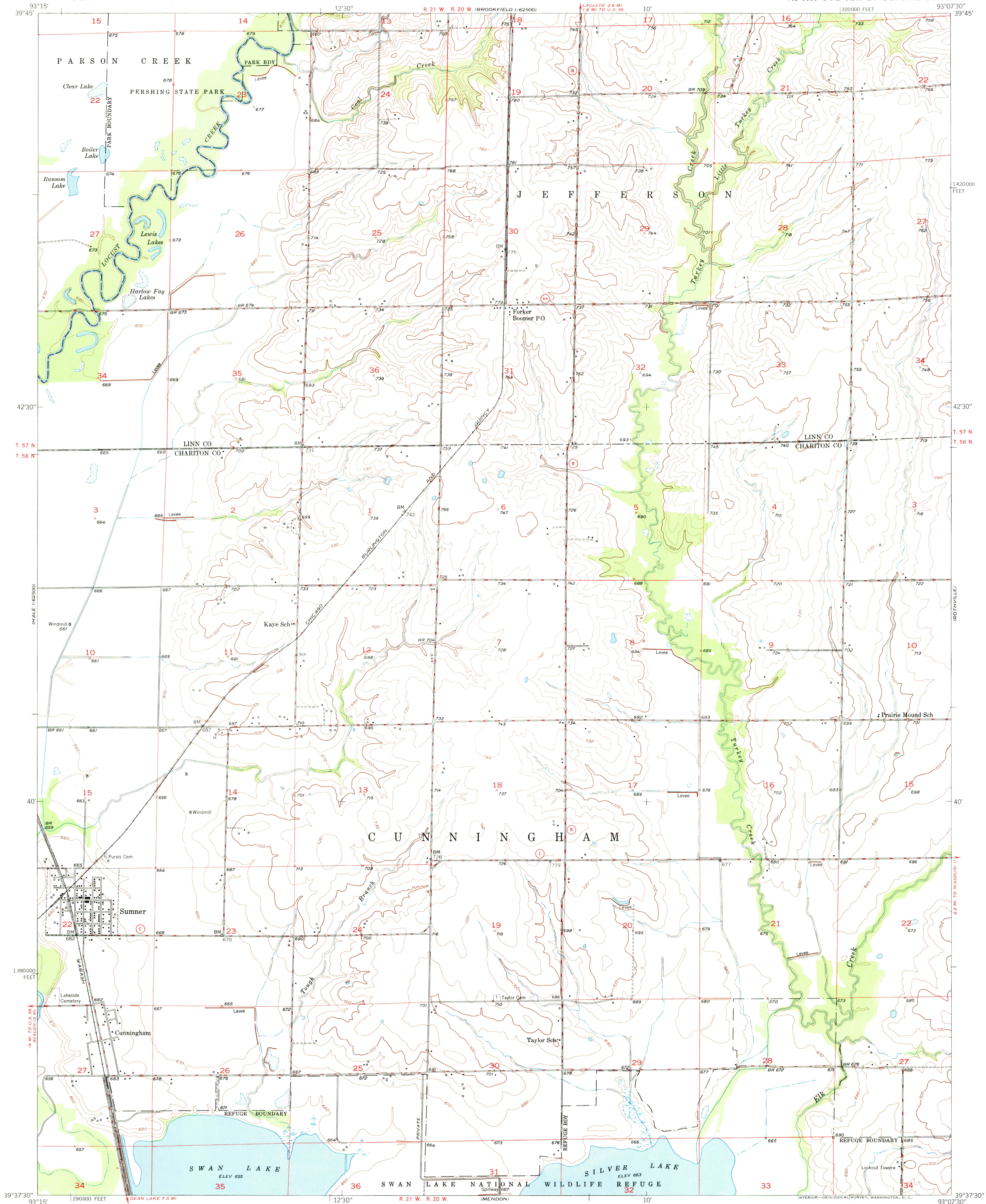


UNITED STATES
DEPARTMENT OF THE INTERIOR
GEOLOGICAL SURVEY

SUMNER QUADRANGLE
MISSOURI
7.5 MINUTE SERIES (TOPOGRAPHIC)



Maped, edited and published by the Geological Survey as part of the Department of the Interior program for the development of the Missouri River Basin. Control by USGS and USC&GS. Culture and drainage in part compiled from aerial photographs taken 1940. Topography by plane-table methods 1949. Polyconic projection. 1927 North American datum. 10,000-foot grid based on Missouri coordinate system, central zone.

TRUE NORTH
MAGNETIC NORTH
APPROXIMATE MEAN
DECLINATION, 1949



CONTOUR INTERVAL 10 FEET
DATUM IS MEAN SEA LEVEL

THIS MAP COMPLIES WITH NATIONAL MAP ACCURACY STANDARDS
FOR SALE BY U. S. GEOLOGICAL SURVEY, DENVER, COLORADO OR WASHINGTON 25, D. C.

ROAD CLASSIFICATION
HARD-SURFACE ALL WEATHER ROADS DRY WEATHER ROADS
Heavy-duty ———— + LANE 16 LANE Improved dirt ————
Medium-duty ———— + LANE 16 LANE Unimproved dirt ————
Loose-surface, graded, or narrow hard-surface ————
U. S. Route State Route
USGS
Historical File
Topographic Division
SUMNER, MO.
N3937.5-W9307.5/7.5
EDITION OF 1949

JAN 2 1974

1200