

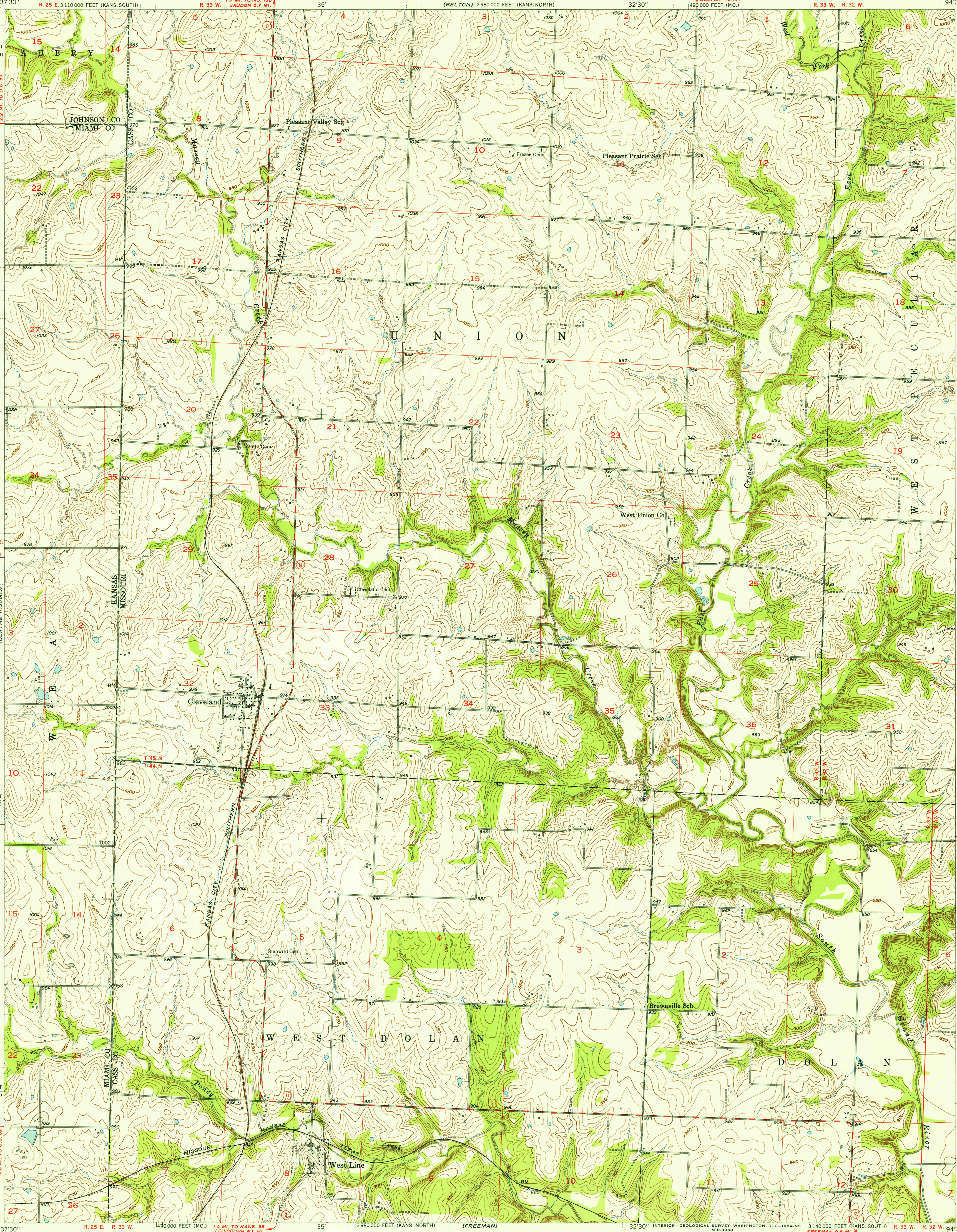
FILE COPY

FILE COPY

UNITED STATES
DEPARTMENT OF THE INTERIOR
GEOLOGICAL SURVEY

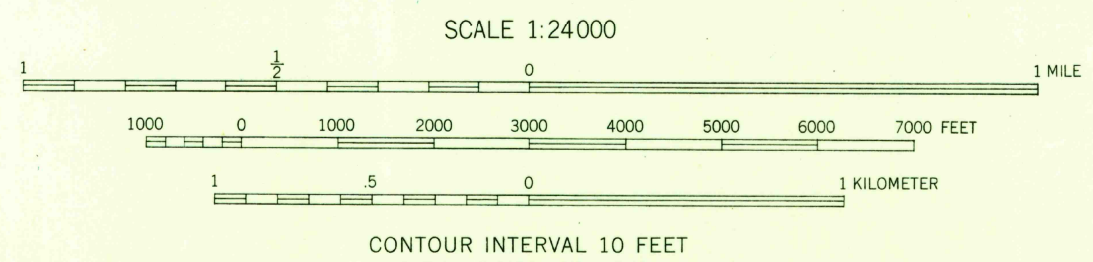
STATE OF MISSOURI
GEOLOGICAL SURVEY AND WATER RESOURCES
EDWARD L. CLARK, STATE GEOLOGIST

WEST LINE QUADRANGLE
MISSOURI-KANSAS
7.5 MINUTE SERIES (TOPOGRAPHIC)



Mapped, edited, and published by the Geological Survey
Control by USGS and USC&GS
Topography from aerial photographs by Kelsh plotter
Aerial photographs taken 1947-1948. Field check 1953
Polyconic projection. 1927 North American datum
10,000-foot grids based on Missouri coordinate system,
west zone and Kansas coordinate system, north and south zones

TRUE NORTH
MAGNETIC NORTH
APPROXIMATE MEAN
DECLINATION, 1953



ROAD CLASSIFICATION
Heavy-duty... 4 LANE IS LANE Light-duty...
Medium-duty... 4 LANE IS LANE Unimproved dirt...
U. S. Route State Route

USGS
Historical File
Topographic Division

WEST LINE, MO.-KANS.
N 3837.5—W 9430.7.5

1953

THIS MAP COMPLIES WITH NATIONAL MAP ACCURACY STANDARDS
FOR SALE BY U. S. GEOLOGICAL SURVEY, FEDERAL CENTER, DENVER, COLORADO OR WASHINGTON 25, D. C.
BY THE STATE GEOLOGICAL SURVEY, LAWRENCE, KANSAS
AND BY THE MISSOURI GEOLOGICAL SURVEY, ROLLA, MISSOURI
A FOLDER DESCRIBING TOPOGRAPHIC MAPS AND SYMBOLS IS AVAILABLE ON REQUEST

JUL 12 1954

2640