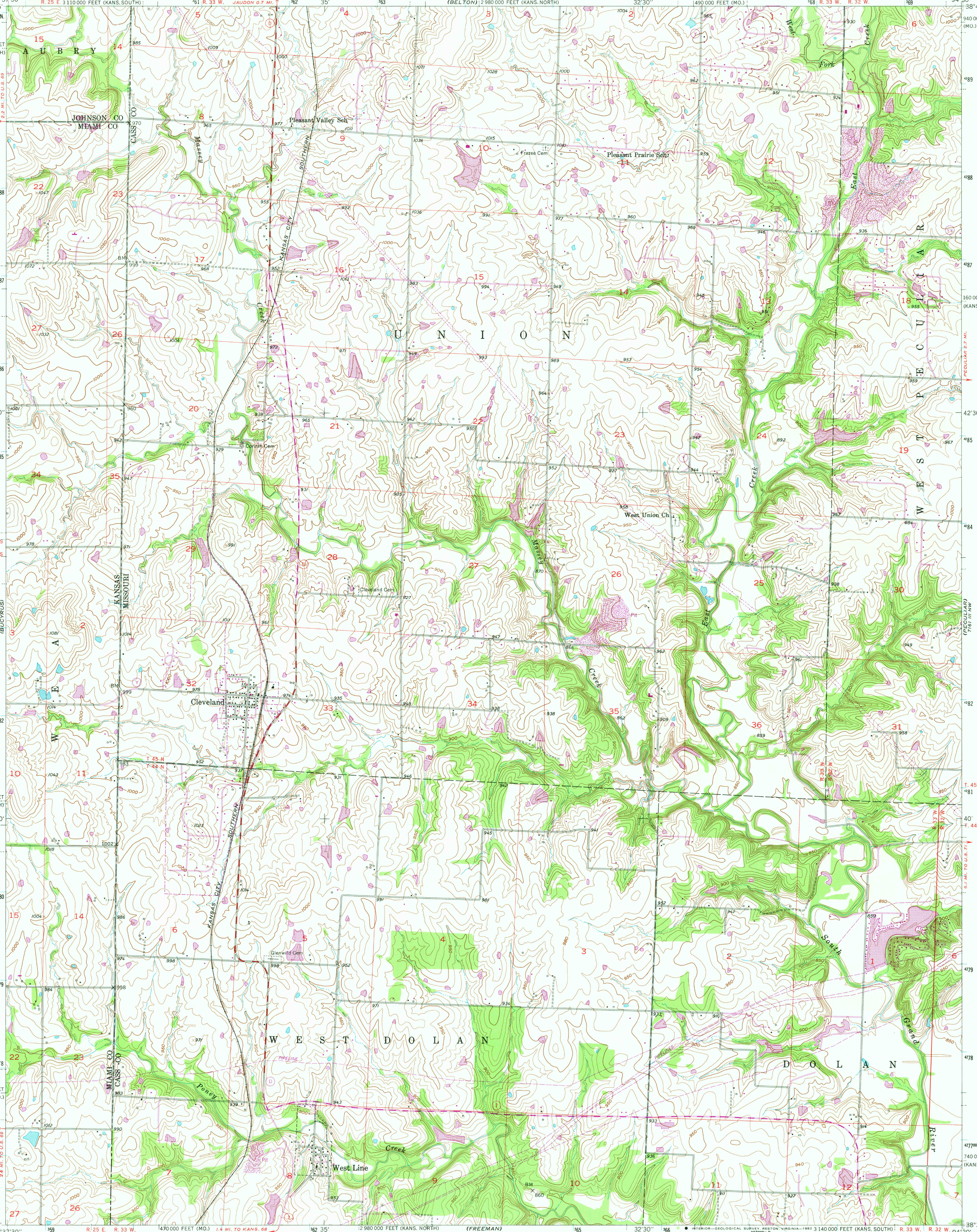


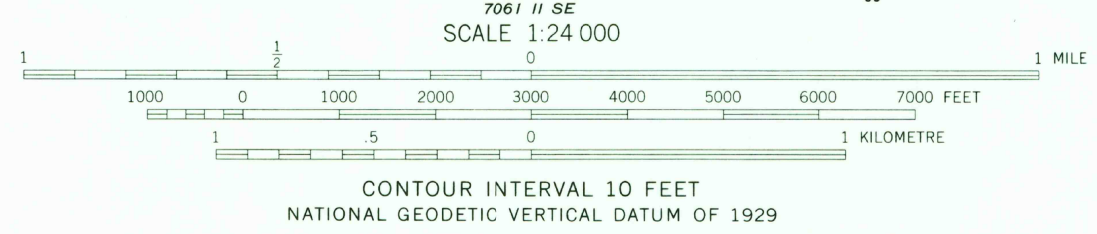
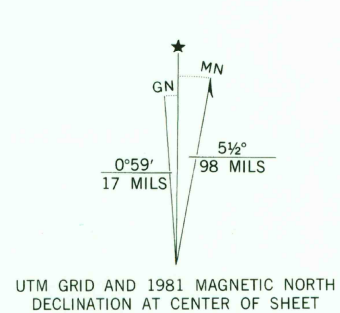
UNITED STATES
DEPARTMENT OF THE INTERIOR
GEOLOGICAL SURVEY

STATE OF MISSOURI
DEPARTMENT OF NATURAL RESOURCES
WALLACE B. HOWE, STATE GEOLOGIST

WEST LINE QUADRANGLE
MISSOURI-KANSAS
7.5 MINUTE SERIES (TOPOGRAPHIC)



Mapped, edited, and published by the Geological Survey
Control by USGS and USC&GS
Topography from aerial photographs by Kelsh plotter
Aerial photographs taken 1947-1948. Field check 1953
Polyconic projection. 1927 North American datum
10,000-foot grids based on Missouri coordinate system,
west zone and Kansas coordinate system, north and south zones
1000-metre Universal Transverse Mercator grid ticks,
zone 15, shown in blue
To place on the predicted North American Datum 1983
move the projection lines 2 meters north and
20 meters east as shown by dashed corner ticks
Revisions shown in purple compiled from aerial photographs taken
1980. Map edited 1981. This information not field checked



THIS MAP COMPLIES WITH NATIONAL MAP ACCURACY STANDARDS
FOR SALE BY U. S. GEOLOGICAL SURVEY, DENVER, COLORADO 80225, OR RESTON, VIRGINIA 22092,
AND THE DIVISION OF GEOLOGY AND LAND SURVEY
MISSOURI DEPARTMENT OF NATURAL RESOURCES, ROLLA, MISSOURI 65401
AND STATE GEOLOGICAL SURVEY, LAWRENCE, KANSAS 66044
A FOLDER DESCRIBING TOPOGRAPHIC MAPS AND SYMBOLS IS AVAILABLE ON REQUEST

ROAD CLASSIFICATION

Heavy-duty	4 LANE 16 LANE	Light-duty
Medium-duty	4 LANE 16 LANE	Unimproved dirt
U. S. Route		State Route



WEST LINE, MO.-KANS.
N3837.5-W9430/7.5

RETURN TO:
USGS NMD HISTORICAL MAP ARCHIVES

1953
DMA 7061 II NE—SERIES V879
PHOTOREVISED 1981

FEB 10 1982
2200