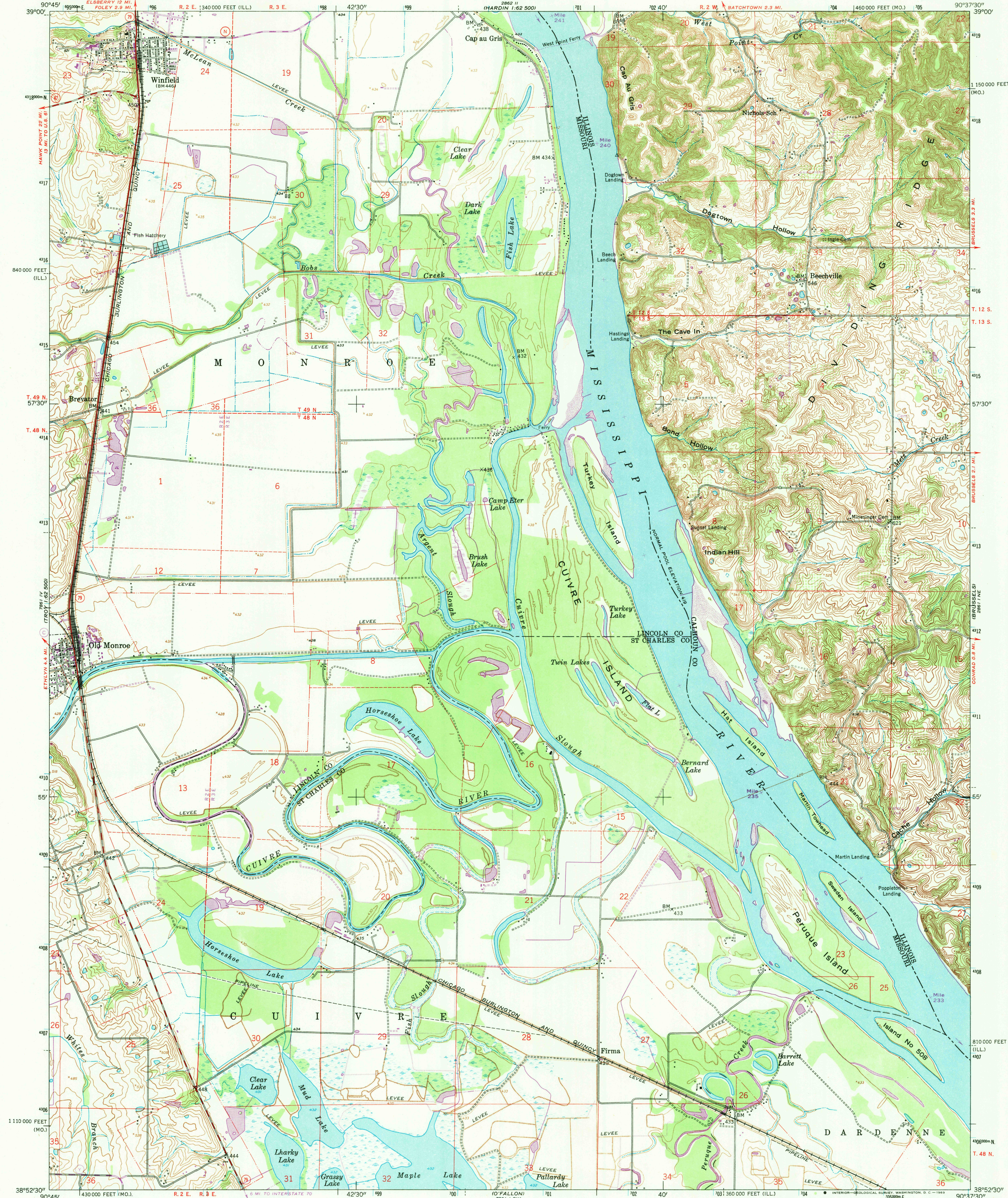


UNITED STATES
DEPARTMENT OF THE INTERIOR
GEOLOGICAL SURVEY

UNITED STATES
DEPARTMENT OF THE ARMY
CORPS OF ENGINEERS

WINFIELD QUADRANGLE
MISSOURI-ILLINOIS
7.5 MINUTE SERIES (TOPOGRAPHIC)
NW 1/4 BRUSSELS 15' QUADRANGLE



Maped by the Army Map Service
Published for civil use by the Geological Survey
Control by USGS, USC&GS, and USCE
Topography from aerial photographs by photogrammetric methods
Aerial photographs taken 1952. Field check 1954
Polyconic projection. 1927 North American datum
10,000-foot grids based on Missouri coordinate system, east zone
and Illinois coordinate system, west zone
1000-meter Universal Transverse Mercator grid ticks, zone 15,
shown in blue
Dashed land lines indicate approximate locations
Unchecked elevations are shown in brown
Revisions shown in purple compiled by the Geological Survey from
aerial photographs taken 1968. This information not field checked

UTM GRID AND 1968 MAGNETIC NORTH
DECLINATION AT CENTER OF SHEET

SCALE 1:24,000
CONTOUR INTERVAL 10 FEET
DATUM IS MEAN SEA LEVEL
THIS MAP COMPLIES WITH NATIONAL MAP ACCURACY STANDARDS
FOR SALE BY U. S. GEOLOGICAL SURVEY, DENVER, COLORADO 80225, OR WASHINGTON, D. C. 20242,
STATE GEOLOGICAL SURVEY, URBANA, ILLINOIS 61801,
AND MISSOURI GEOLOGICAL SURVEY, ROLLA, MISSOURI 65401
A FOLDER DESCRIBING TOPOGRAPHIC MAPS AND SYMBOLS IS AVAILABLE ON REQUEST

USGS
Historical File
Topographic Division
U.S.G.S.
FILE COPY
TOPOGRAPHIC DIVISION
WINFIELD, MO.-ILL.
NW 1/4 BRUSSELS 15' QUADRANGLE
N 3852.5-W 9037.5/7.5
1954
PHOTOREVISED 1968
AMS 7861 I NW-SERIES V879