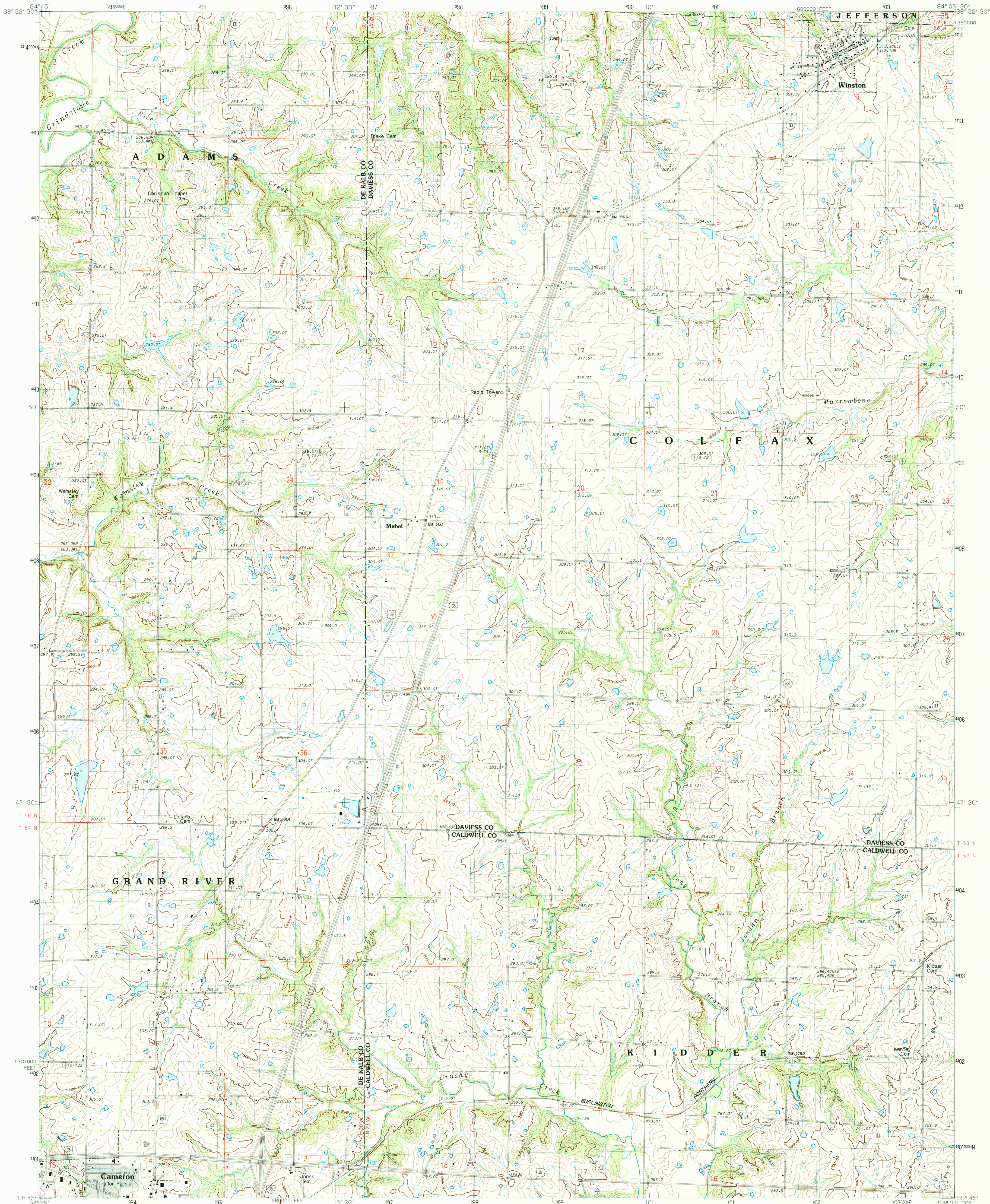


UNITED STATES  
DEPARTMENT OF THE INTERIOR  
GEOLOGICAL SURVEY

WINSTON QUADRANGLE  
MISSOURI  
7.5 MINUTE SERIES (TOPOGRAPHIC)



PRODUCED BY THE UNITED STATES GEOLOGICAL SURVEY  
CONTROL BY ..... USGS AND NOS/NOAA  
COMPILED FROM AERIAL PHOTOGRAPHS TAKEN ..... 1979  
FIELD CHECKED ..... 1981 MAP EDITED ..... 1984  
PROJECTION ..... UNIVERSAL TRANSVERSE MERCATOR  
GRID ..... 100-METER UNIVERSAL TRANSVERSE MERCATOR  
UTM ..... 18M MAGNETIC NORTH DECLINATION ..... 0° 46' WEST  
VERTICAL DATUM ..... NATIONAL GEODETIC VERTICAL DATUM OF 1929  
HORIZONTAL DATUM ..... 1927 NORTH AMERICAN DATUM  
To place on the predicted North American Datum of 1983,  
move the projection lines as shown by dashed corner ticks  
(3 meters north and 19 meters east)  
There may be private inholdings within the boundaries of any  
Federal and State Reservations shown on this map  
Gray tint indicates area in which selected buildings are shown

PROVISIONAL MAP  
Produced from original  
manuscript drawings. Infor-  
mation shown as of date of  
field check. 2

SCALE 1:24 000  
1 000 0 1000 2000 3000 4000 5000 6000 7000 8000 9000 10000  
KILOMETERS  
METERS  
MILES  
FOOT  
CONTOUR INTERVAL 4 METERS  
CONTROL AND FIELD ESTABLISHED ELEVATIONS SHOWN TO THE NEAREST 0.1 METER  
OTHER ELEVATIONS SHOWN TO THE NEAREST METER  
To convert meters to feet multiply by 3.2808  
To convert feet to meters multiply by .3048  
THIS MAP COMPLIES WITH NATIONAL MAP ACCURACY STANDARDS  
FOR SALE BY U.S. GEOLOGICAL SURVEY, DENVER, COLORADO 80225, OR RESTON, VIRGINIA 22092  
AND DIVISION OF GEOLOGY AND LAND SURVEY  
MISSOURI DEPARTMENT OF NATURAL RESOURCES, ROLLA, MISSOURI 65401

1	2	3	1	Maysville
4	5	6	2	Weatherby
7	8	9	3	Alamont
			4	Fordham
			5	Kidder
			6	Cameron West
			7	Cameron East
			8	Hamilton West

ADJOINING 7.5' QUADRANGLE NAMES

CONTOURS AND ELEVATIONS IN METERS  
ROAD LEGEND  
Improved Road .....  
Unimproved Road .....  
Trail .....  
Interstate Route U.S. Route State Route

WINSTON, MISSOURI  
PROVISIONAL EDITION 1984

39094G2-TM-024

RETURN TO:  
USGS AND HISTORICAL MAP ARCHIVES