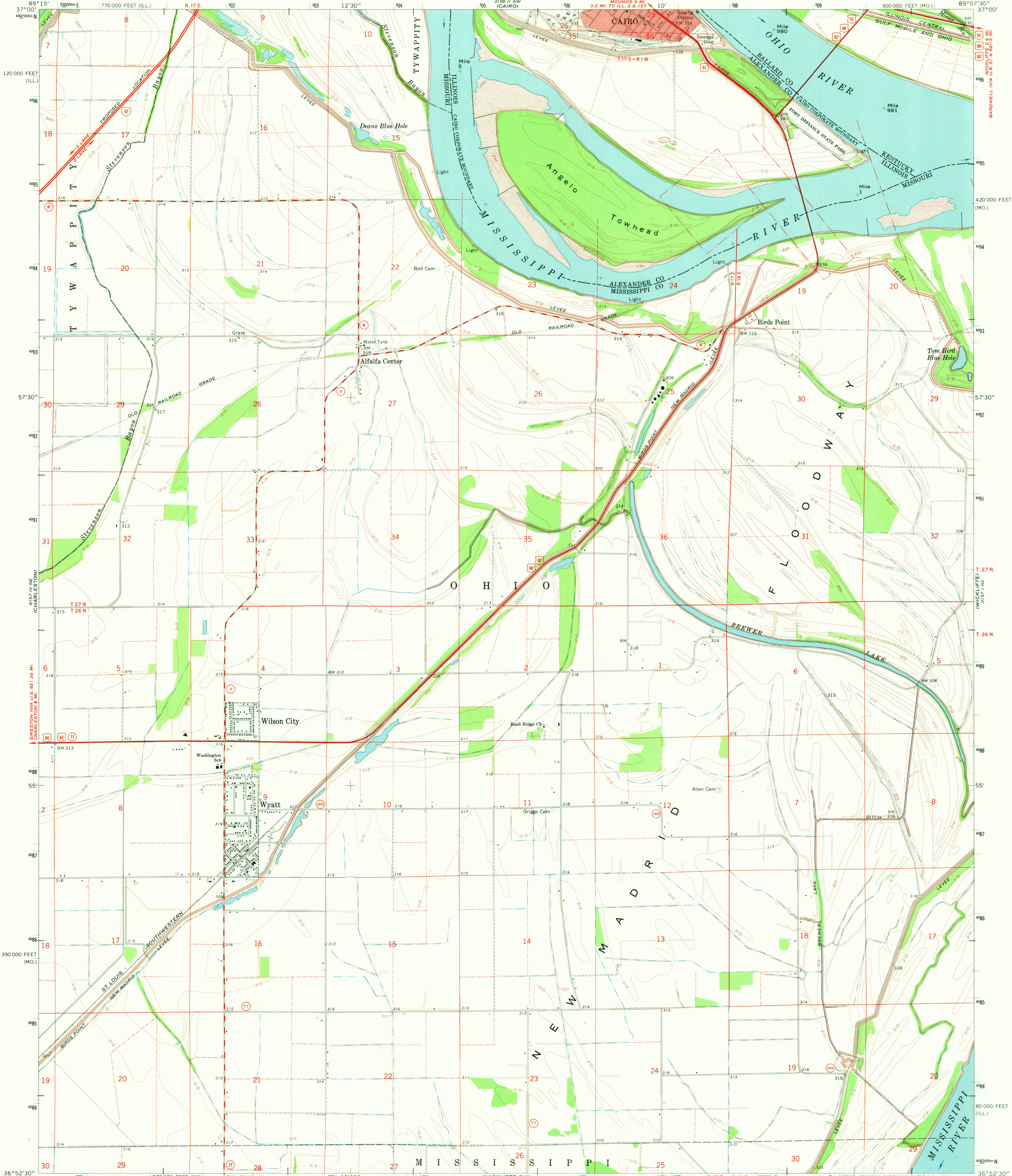
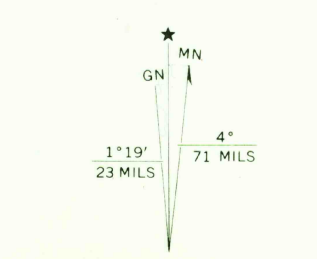


UNITED STATES
DEPARTMENT OF THE INTERIOR
GEOLOGICAL SURVEY

WYATT QUADRANGLE
MISSOURI-ILLINOIS-KENTUCKY
7.5 MINUTE SERIES (TOPOGRAPHIC)
NW/4 WICKLIFFE 15' QUADRANGLE



Mapped, edited, and published by the Geological Survey
Control by USGS and USC&GS
Planimetry by photogrammetric methods from aerial photographs taken 1967. Topography by planetable surveys 1969
Polyconic projection. 1927 North American datum
10,000-foot grids based on Missouri coordinate system, east zone and Illinois coordinate system, west zone
1000-meter Universal Transverse Mercator grid ticks, zone 16, shown in blue
Red tint indicates area in which only landmark buildings are shown
Fine red dashed lines indicate selected fence and field lines where generally visible on aerial photographs. This information is unchecked
The Kentucky-Illinois State boundary as shown represents the approximate position of the low waterline as determined from U. S. Corps of Engineers, Ohio River Charts, surveyed 1911-1912, and supplementary information



SCALE 1:24,000
CONTOUR INTERVAL 5 FEET
DATUM IS MEAN SEA LEVEL
THIS MAP COMPLIES WITH NATIONAL MAP ACCURACY STANDARDS
FOR SALE BY U. S. GEOLOGICAL SURVEY, DENVER, COLORADO 80225, OR WASHINGTON, D. C. 20242.
MISSOURI GEOLOGICAL SURVEY, ROLLA, MISSOURI 65401.
STATE GEOLOGICAL SURVEY, URBANA, ILLINOIS 61801.
KENTUCKY GEOLOGICAL SURVEY, LEXINGTON, KENTUCKY 40506.
AND KENTUCKY DEPARTMENT OF COMMERCE, FRANKFORT, KENTUCKY 40601
A FOLDER DESCRIBING TOPOGRAPHIC MAPS AND SYMBOLS IS AVAILABLE ON REQUEST



ROAD CLASSIFICATION
Primary highway, all weather, light duty road, all weather, hard surface
Secondary highway, all weather, unimproved road, fair or dry hard surface
Interstate Route U. S. Route State Route
WYATT, MO.-ILL.-KY.
NW/4 WICKLIFFE 15' QUADRANGLE
N3652.5-W8907.5/7.5
1969
AMS 8157 1 NW-SERIES V879